

## NOTES FOR 2015 SAMPLING SEASON

Replacement bridge @ Christiana Creek, County Road 4. Construction began November 2014 and is expected to be completed in July 2015 according to Elkhart County Highway's web site. An employee with Elkhart Public Works and Utilities granted us access onto her property on Meadow Creek Drive in 2014. This site was sampled twice in 2014 on the same days as the site on CR 4 for comparison. The readings were similar and this site makes a good replacement location. Permission will need to be obtained from the property owner prior to the 2015 sampling season. Christiana Creek is used as the control stream. Upon completion of the bridge project, we would like resume sampling at the County Road 4 location.

The Kercher Road/ CR 38 bridge over the Elkhart River is scheduled to be replaced in 2015. We do not sample at this location. However, with the closure of the bridge, increased traffic will more than likely put our staff members at an increased risk at our location on CR 40. It is anticipated that CR 40 will be used as an alternate route for drivers. We have thought about utilizing a site at the City of Goshen Violet Cemetery. This site is located between Kercher Road/ CR 38 and CR 40. Permission by the City of Goshen may be needed. We would be using the dipper instead of the Van Dorn sampler. This is similar to what we did when the Six Span Bridge project was being constructed and we sampled upstream with a dipper at the Nibbyville Public Access site in 2009. Attached is an aerial map and photos of this location for your reference.

In the event the Advisory Board members increase the sites on Cobus Creek there are a few adequate sites that could be added. While it will not be feasible to sample all the sites the following sites were evaluated:

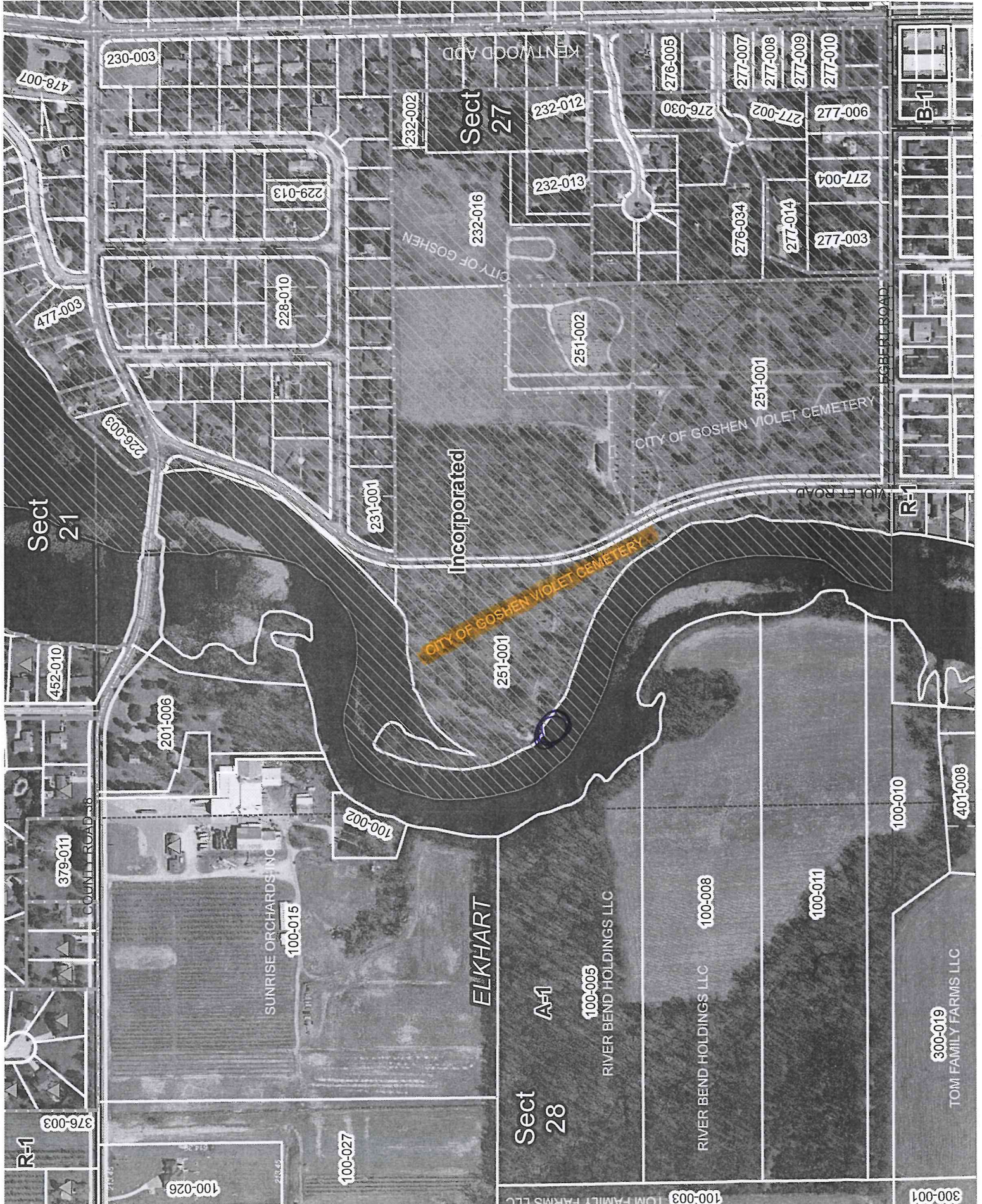
CR 2  
Cross Creek Drive  
Old Farm Road  
CR 8  
CR 12

Also, I spoke with Dr. Robert Woods, Director of Business Operations for Elkhart Community School Corporation who granted our staff access onto the school property. However, on February 10, 2015, the ground was snow covered and the lane was not accessible.



City of Goshen - Violet Cemetery 1-22-15





Sect 21

Sect 27

Sect 28

Incorporated

ELKHART

CITY OF GOSHEN VIOLET CEMETERY

CITY OF GOSHEN VIOLET CEMETERY

478-007

230-003

232-002

KENTWOOD ADD

276-005

277-007

277-008

277-009

277-010

477-003

229-013

228-010

232-016

232-012

276-030

277-002

900-272

277-004

300-272

277-014

226-003

231-001

251-002

251-001

277-003

452-010

201-006

251-001

VIOLET ROAD

R-1

379-011

SUNRISE ORCHARDS INC

100-002

A-1

100-005

100-008

100-011

100-010

401-008

R-1

376-003

100-026

100-027

100-003 TOM FAMILY FARMS LLC

300-001

300-019

TOM FAMILY FARMS LLC

RIVER BEND HOLDINGS LLC

RIVER BEND HOLDINGS LLC

# At end of 2014 Sampling Season

## TUESDAY SURFACE WATER SAMPLES

DATE \_\_\_\_\_ 2014

WET EVENT Y N

#	SITE	TIME	TEMP	DO	SPC	PH	NO3	PO4	CHLORIDES	TAG #
100	Shaffer Ditch CR 113 & CR 26	2yrs.								
110	Hoke Ditch CR 11	2yrs.								
120	Owl Creek CR 11	2yrs.								
62	Yellow Creek CR 32	2yrs.								
130	Little Yellow Creek CR 13	2yrs.								
66	Yellow Creek CR 138	5yrs.	Site is downstream of SW							
68	Yellow Creek CR 11	5yrs.								
70	Weaver Ditch CR 44	5yrs.	Site is downstream of Foraker							
85	Turkey Creek CR 17	4yrs.								
83	Turkey Creek CR 50	4yrs.								
90	Swoveland Ditch CR 21	4yrs.								
60	Yellow Creek CR 18	3yrs.								
50	Christiana Creek CR 4	1yrs	Control Stream							
53	Christiana Creek 51860 Meadow Crk. Dr.	Replacement site when bridge is closed on CR 4								

SAMPLED BY \_\_\_\_\_  
 RELINQUISHED BY \_\_\_\_\_  
 ANALYSIS BY \_\_\_\_\_

RECEIVED BY \_\_\_\_\_  
 LAB ARRIVAL TIME \_\_\_\_\_  
 DATE \_\_\_\_\_

THURSDAY SURFACE WATER SAMPLES

DATE \_\_\_\_\_ 2014

WET EVENT Y N

#	SITE	TIME	TEMP	DO	SPC	PH	NO3	PO4	CHLORIDES	TAG #
21	Rock Run Creek CR 21	4 yrs.	(2008-2011)						Began again 2013, 2014	Total 6 yrs.
26	Rock Run Creek CR 34	7 yrs.								
10	Horn Ditch CR 31	7 yrs.								
23	Elkhart River CR 43									
1	Elkhart River CR 40									
22	Elkhart River Indiana Avenue		Historical							
2	Elkhart River Old CR 17		Sites							
4	Heaton Lake Ideal Beach									
5	Heaton Lake 22892 Lake Shore									
6	Simonton Lake 51093 Beach Drive									
7	Simonton Lake 51330 SR 19									
200	Cobus Creek CR 10	1 yr.								

SAMPLED BY \_\_\_\_\_  
 RELINQUISHED BY \_\_\_\_\_  
 ANALYSIS BY \_\_\_\_\_

RECEIVED BY \_\_\_\_\_  
 LAB ARRIVAL TIME \_\_\_\_\_  
 DATE \_\_\_\_\_