



## Minutes of the Goshen Common Council Joint Meeting with Goshen School Board

February 16, 2020

6:00 p.m. Council Chambers, Police & Court Building, 111 East Jefferson Street, Goshen, Indiana

Mayor Jeremy P. Stutsman called the meeting to order and led in the Pledge of Allegiance

Present: Jim McKee (Dist 1), Doug Nisley (Dist 2), Gilberto Pérez, Jr. (Dist 5), Matt Schrock (Dist 3),  
Megan Eichorn (Dist 4), Julia King (At-Large), Council President Brett Weddell (At-Large)  
Youth Advisor Hazany Palomino (Non-voting)

Absent: None

Mayor Stutsman requested addition of a presentation by Elkhart County Health Officer Dr. Bethany Waite.

**Weddell/Eichorn moved to approve the agenda, with addition of Dr. Waite presentation. PASSED 7-0**

The meeting proceeded in accordance with the agenda.

*See attached exhibits for slides shared by various presenters.*

No members of the public spoke during public comment period.

The council took no formal actions.

**Weddell/Eichorn moved to adjourn. PASSED 7-0**

*Meeting Adjourned 7:40 p.m.*

*Exhibit A (20 pgs): COVID-19 in Elkhart County, Dr. Bethany Waite, Elkhart County Health Officer*

*Exhibit B (1 pg): Recognition of GHS Girls Basketball, Coach Shaun Hill*

*Exhibit C (16 pgs): GCS Construction Project Update, Alan Metcalfe*



*Exhibit D (16 pgs): Walk Zones & Community Hub Stops, Alan Metcalfe*

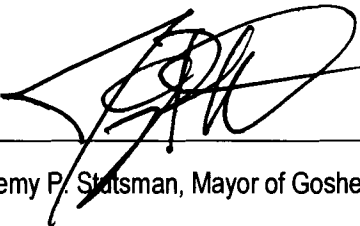
*Exhibit E (11 pgs): Kid Mayor, Wendy Clark and Tami Hicks, Model Elementary School*

*Exhibit F (12 pgs): Goshen Housing Developments (slides only, no presentation)*

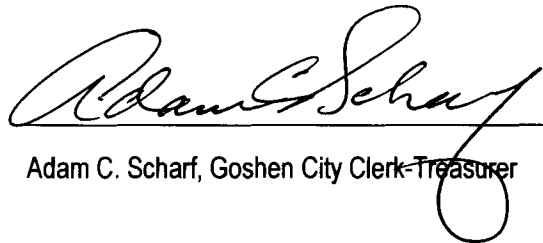
*Exhibit G (2 pgs): Parks & Recreation Update, Tanya Heyde*

*Exhibit H (14 pgs): Climate Action Plan, Aaron Kingsley*

APPROVED:

  
\_\_\_\_\_  
Jeremy P. Slatsman, Mayor of Goshen

ATTEST:

  
\_\_\_\_\_  
Adam C. Scharf, Goshen City Clerk-Treasurer



# Elkhart County Health Department County Update

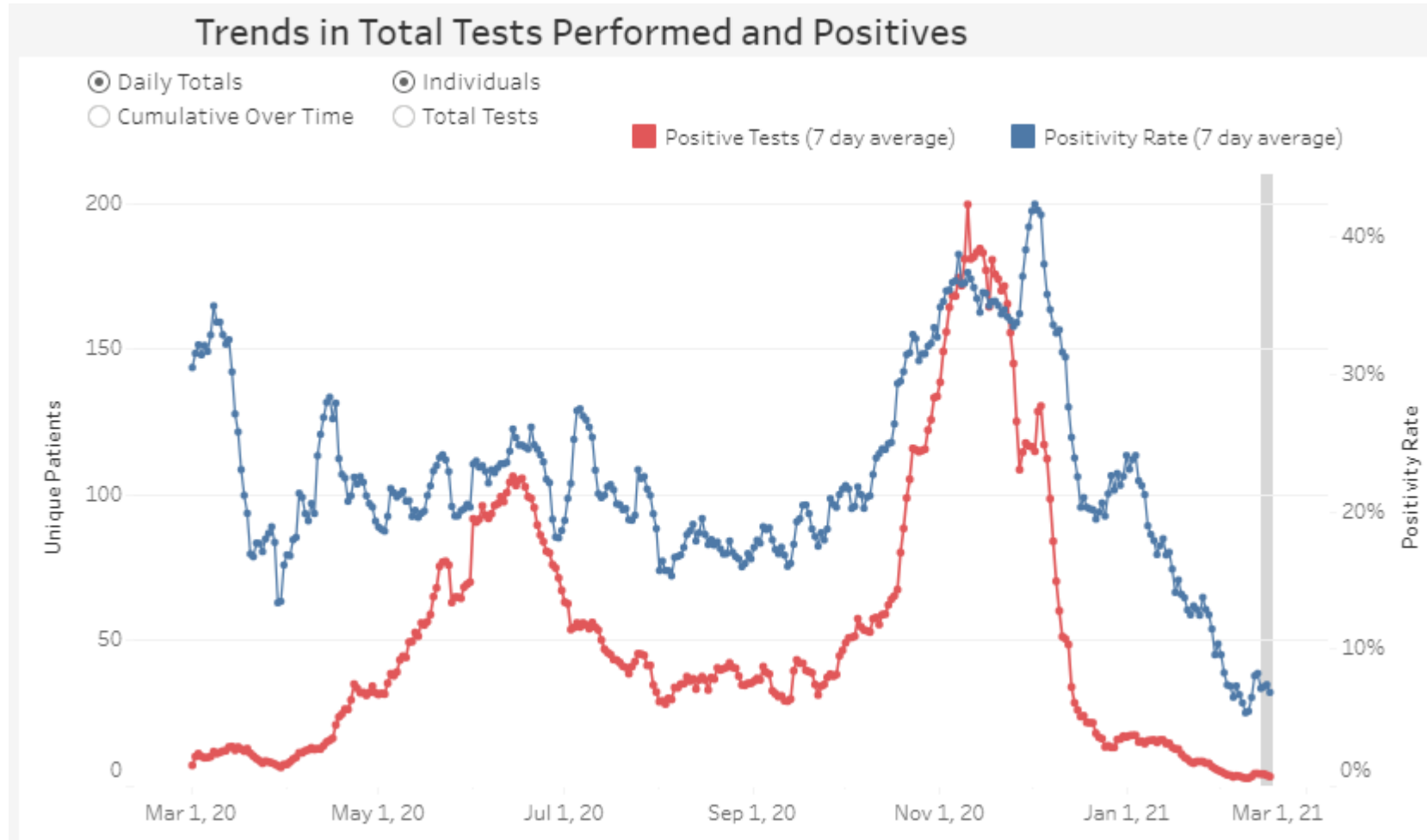


Dr. Bethany Wait D.O.  
Health Officer

February 18<sup>th</sup>, 2021



# Positive Cases

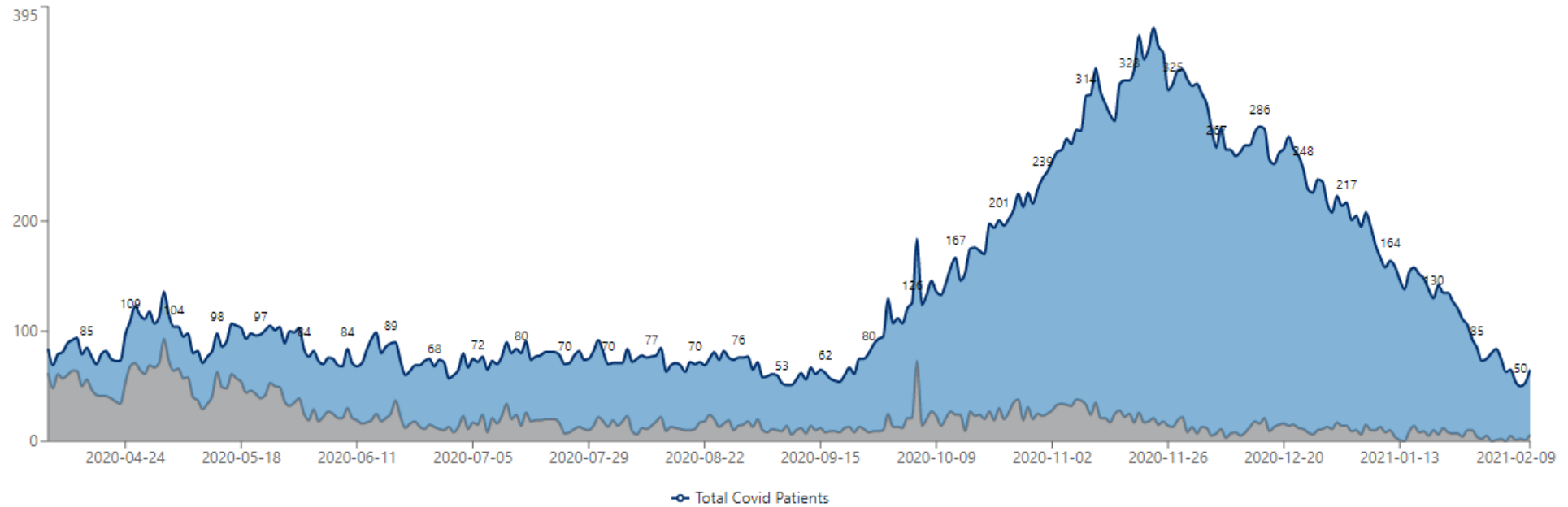


# Hospitalizations

## Hospitalizations

Census Admissions

District 2 COVID-19 Hospital Census <sup>i</sup>



# Advisory Level Yellow

Executive Order: Feb. 1 – Feb. 28



- **Overall attendance at social gatherings or events**
  - **Red** or **orange**: May not exceed 25% of facility capacity
  - **Yellow**: May not exceed 50% of facility capacity
  - **Blue**: May be at 100% of facility capacity
    - With appropriate social distancing, face covering and other safety precautions
- **Safety plans for social gatherings or events**
  - Include the number of invited, requested or expected attendees and staff
  - Plan must be submitted to local health department
  - Must include: Occupancy and capacity information, Covid screening, social distancing measures, increased sanitation, face coverings and compliance





# Positivity Within Age Groups

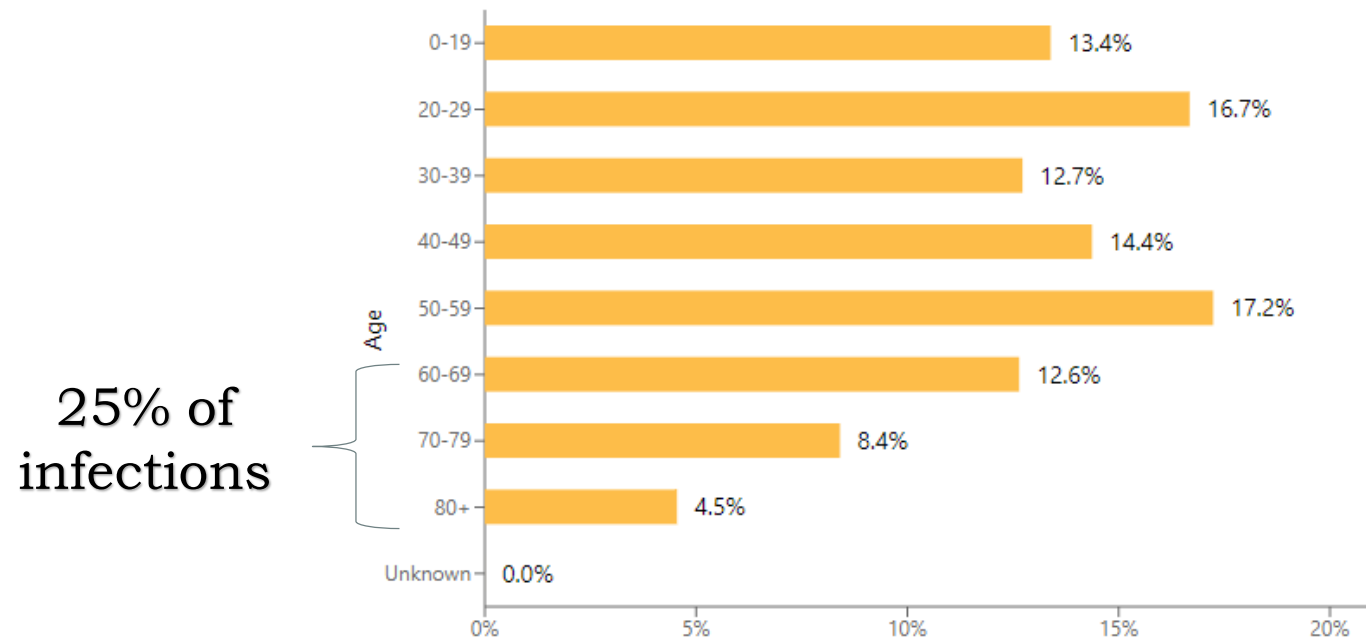
## Demographic Distributions

Positive Cases

Deaths

Tested Individuals

### District 2 Demographics for Positive Cases\*

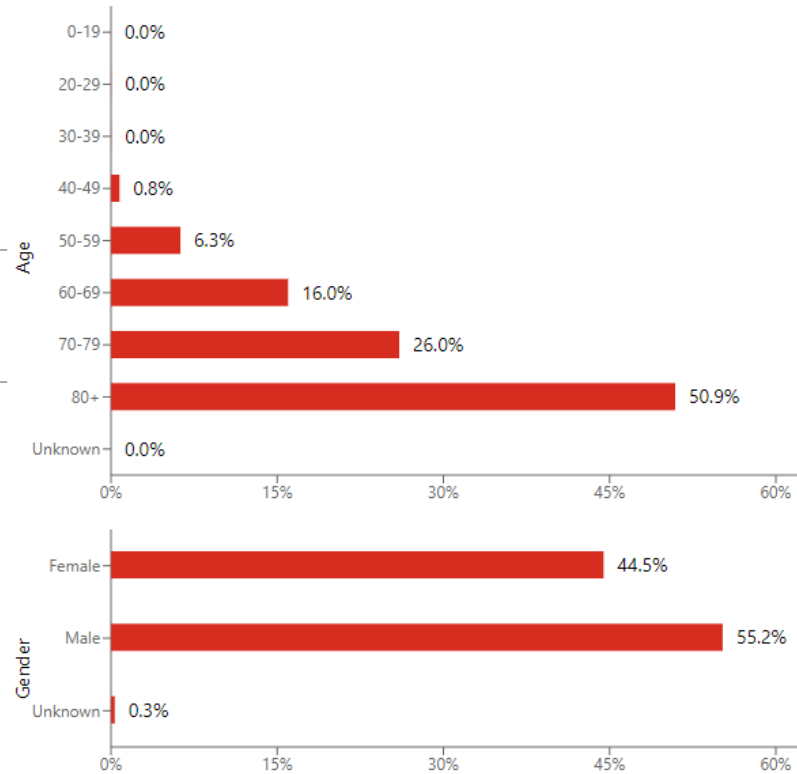




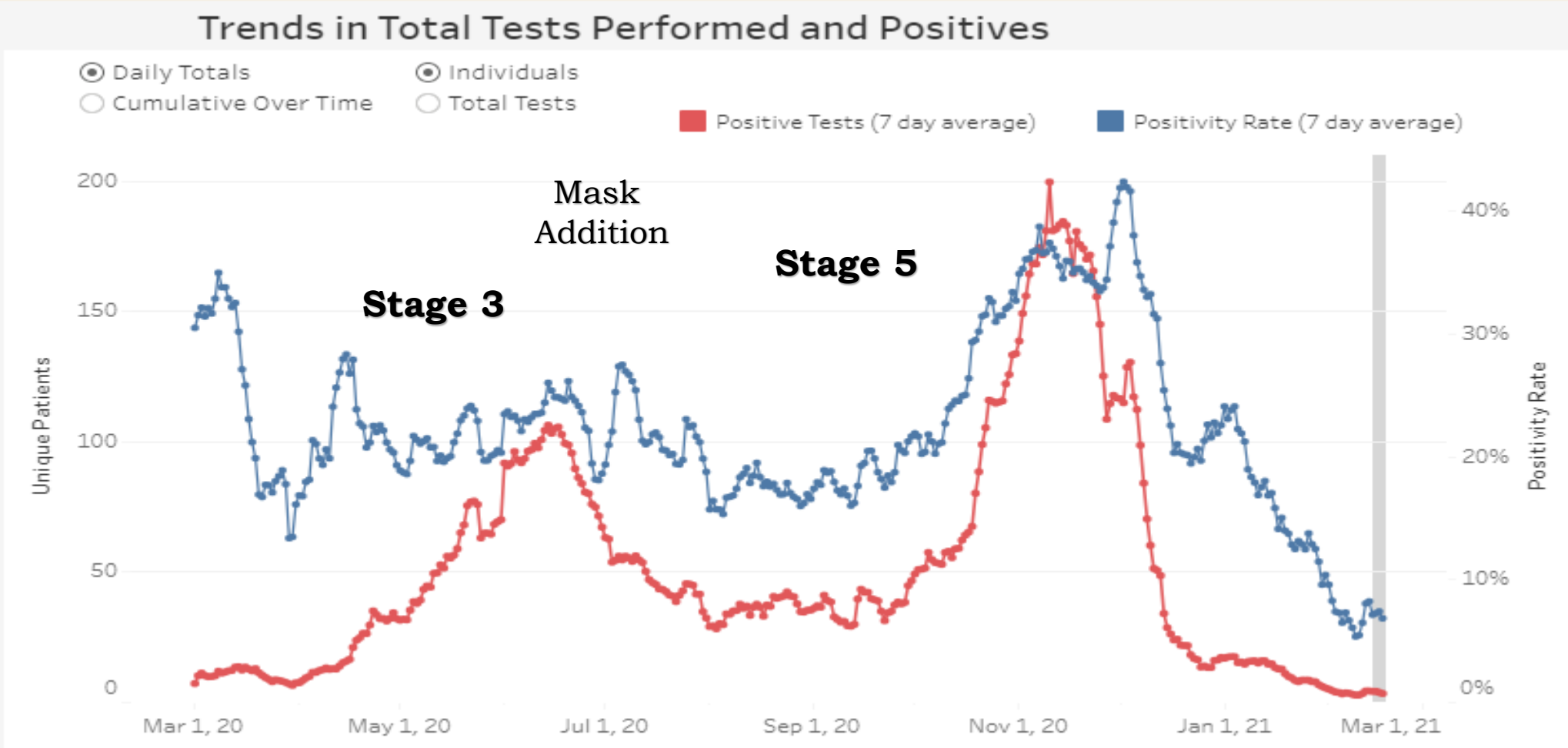
# Deaths Within Age Groups

District 2 Demographics for Deaths\*

92.9% of deaths

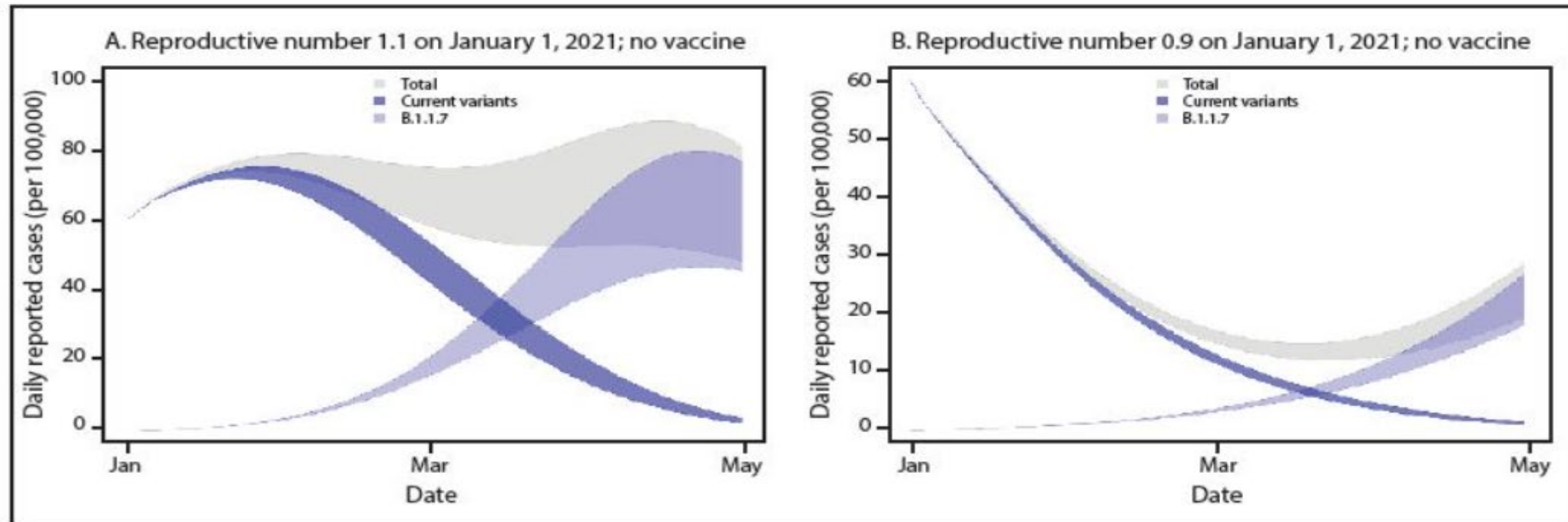


# Reopening Elkhart County



# COVID Variants

FIGURE 1. Simulated case incidence trajectories\* of current SARS-CoV-2 variants and the B.1.1.7 variant,† assuming no community vaccination and either initial  $R_t = 1.1$  (A) or initial  $R_t = 0.9$  (B) for current variants — United States, January–April 2021



**Abbreviation:**  $R_t$  = time-varying reproductive number.

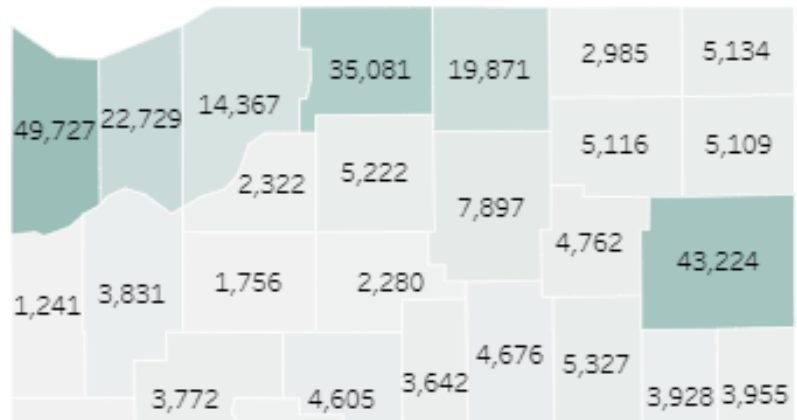
\* For all simulations, it was assumed that the reporting rate was 25% and that persons who were seropositive or infected within the simulation became immune. The simulation was initialized with 60 reported cases of SARS-CoV-2 infection per 100,000 persons (approximately 200,000 cases per day in the U.S. population) on January 1, 2021. Bands represent simulations with 10%–30% population-level immunity as of January 1, 2021.

† Initial B.1.1.7 prevalence is assumed to be 0.5% among all infections and B.1.1.7 is assumed to be 50% more transmissible than current variants.

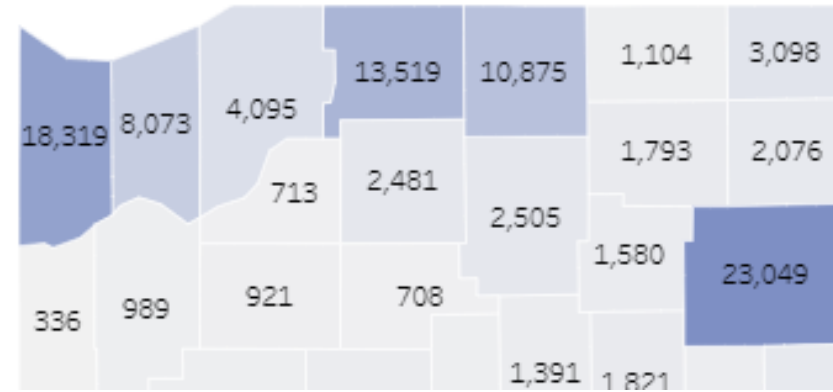


# Vaccine Dashboard

## First Dose



## Fully Vaccinated



# Vaccination Sites

- Elkhart County Health Department
- Beacon Health
- Goshen Health
- Vista Community Health Center
- Heart City Health



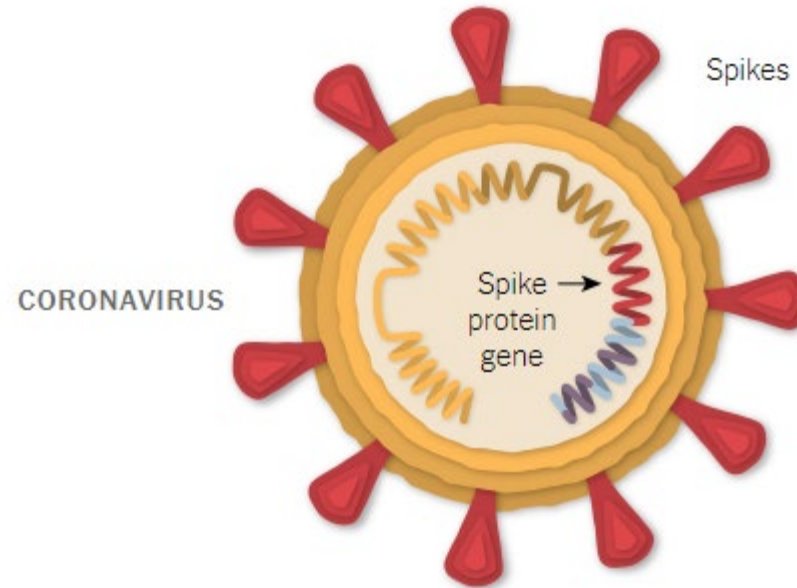
# Upcoming Eligibility

- Hoosiers age 50 and older (857,895)
- Residents with specific conditions
  - Active dialysis patients
  - Down Syndrome
  - Post-solid organ transplant recipients
  - Sickle cell disease patient
  - People who are actively in treatment for cancer now or in the last 3 months, or with active primary lung cancer or active hematologic cancers; lymphoma, leukemia and multiple myeloma

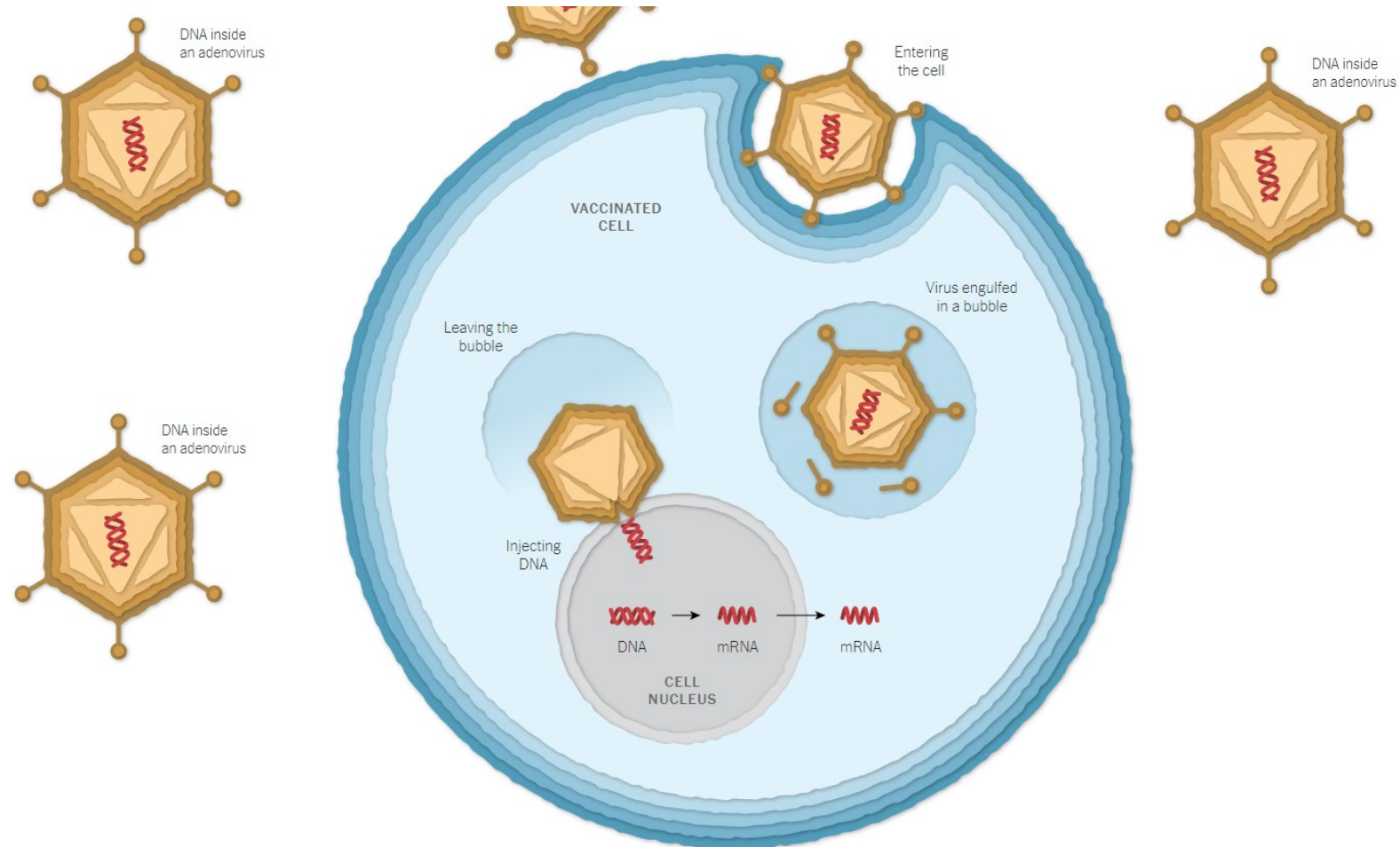


# Johnson & Johnson Vaccine

- A single dose of the vaccine had an efficacy rate is 66 percent.
- 85 percent effective preventing a severe case of COVID-19
- No hospitalizations
- No deaths

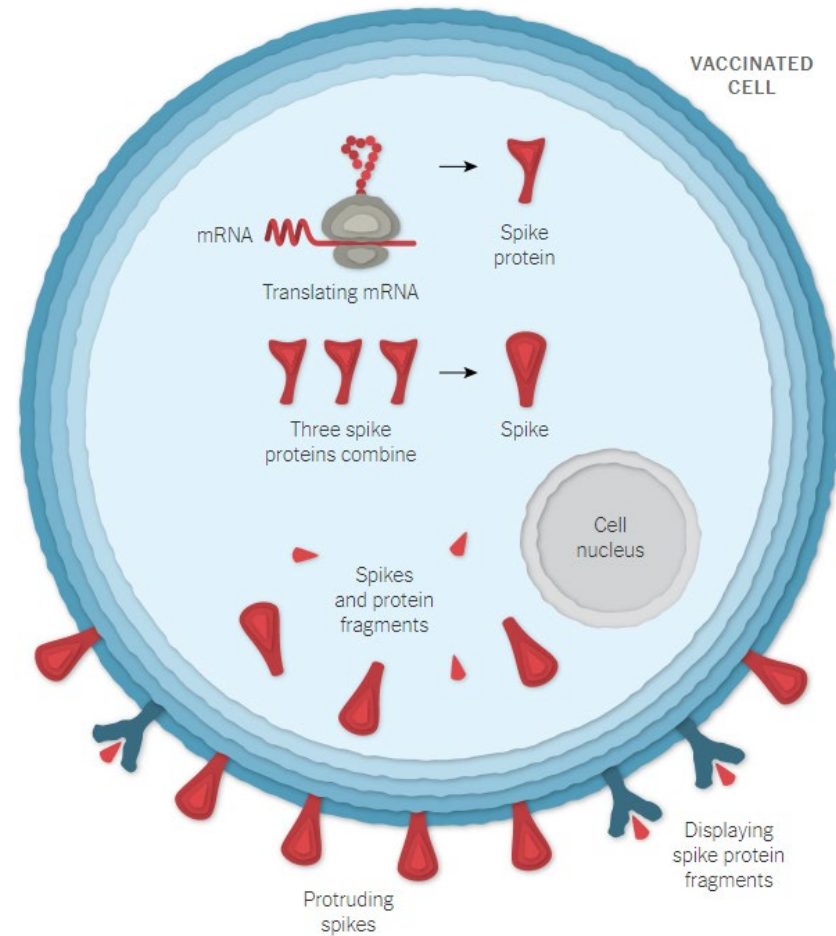


# Spike Protein DNA is Placed in Adenovirus

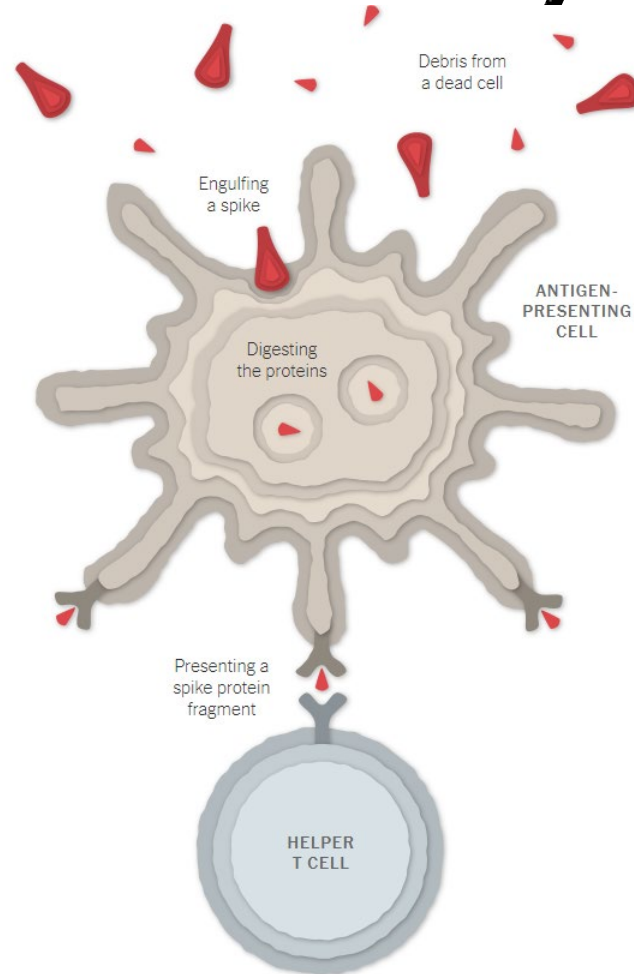




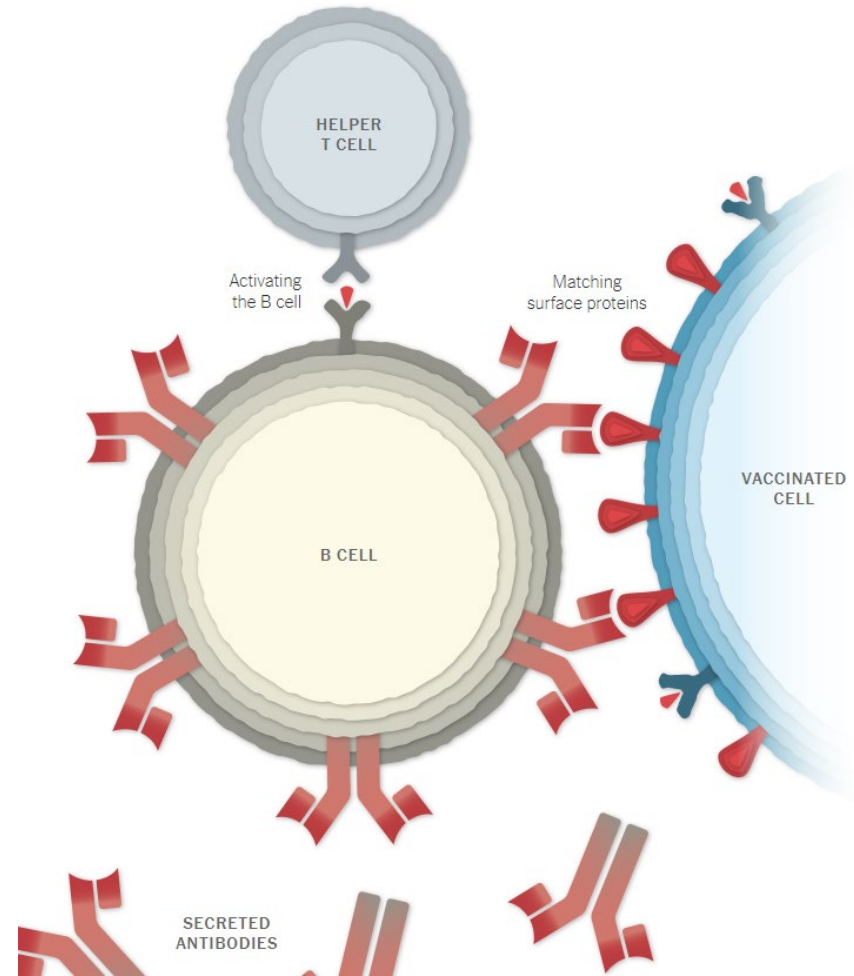
# Spike Protein is Made Within Human Cell



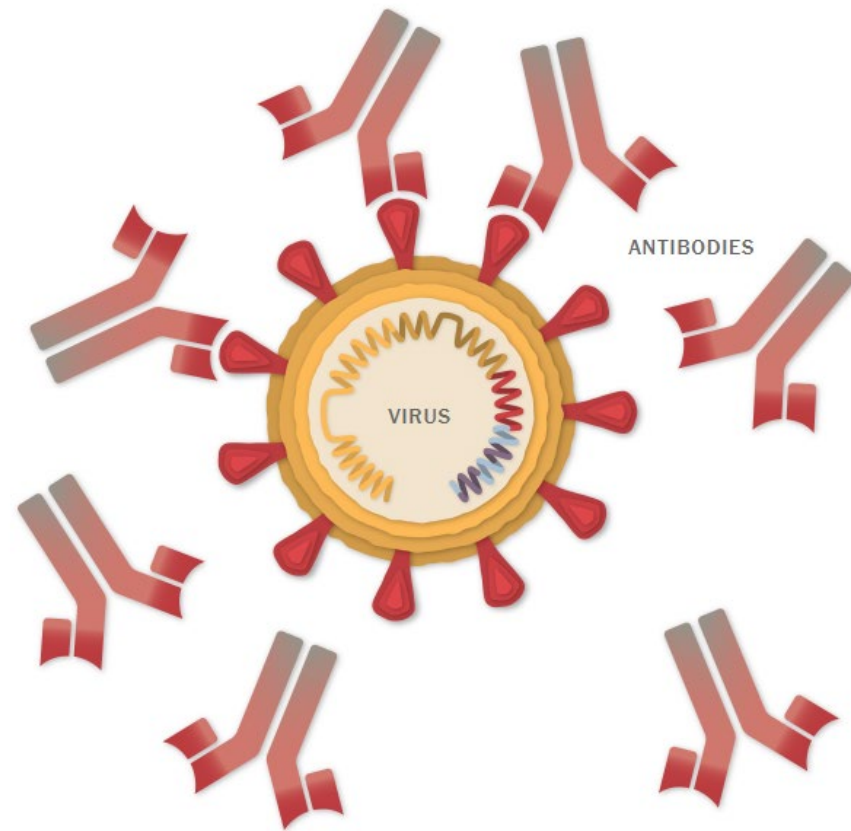
# Spike Protein Presented to Immune System



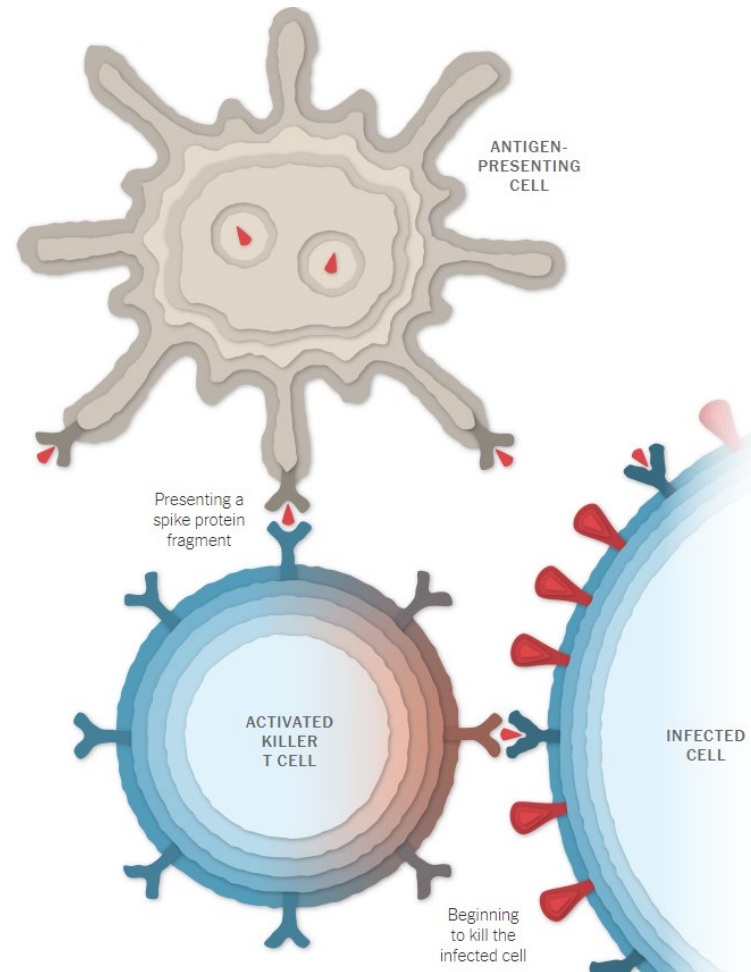
# Helper T Cell Presents Antigen to B Cell



# B Cells Produce Antibodies

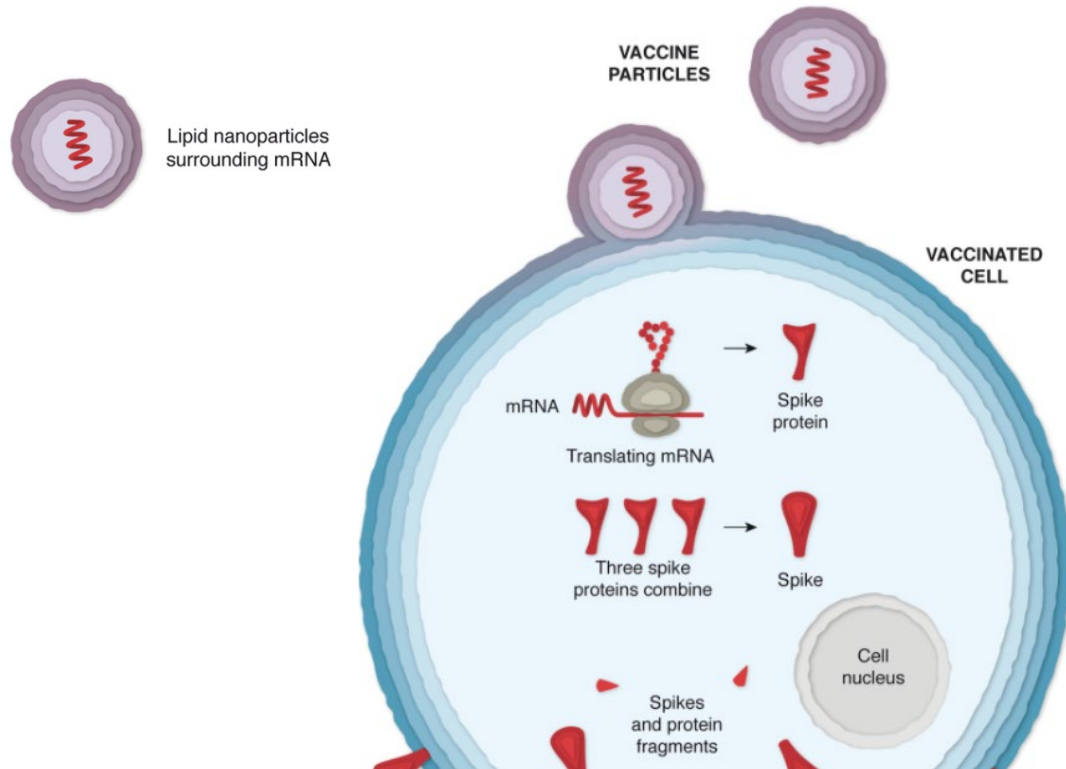


# Activated Killer T Cell Attacks Infected Cell

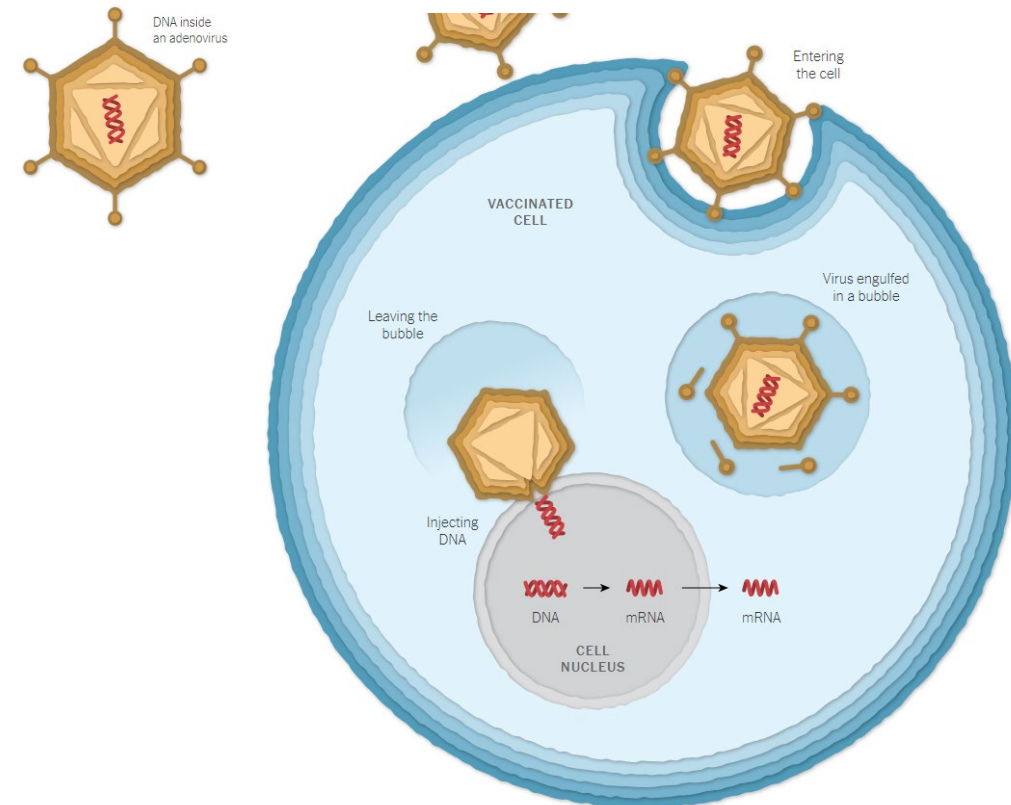


# Vaccine Comparison

## Pfizer/Moderna mRNA Vaccine



## Johnson & Johnson





## **Mrs. Lori Line, Executive Director of Talent Development and Management**

Memo from: Mrs. Lori Line, Executive Director of Talent Development and Management

RE: Staff and Student Recognition

Date: February 16, 2021

It is an honor to recognize the following students/staff members at this board meeting:

Name:	Recognition:
<p><b>Shaun Hill &amp; Girls Basketball Team :</b></p> <p><b>Players</b></p> <p>Sarah Harmelink Briana Valderrama Maddie Garber Tyra Marcum Trinity Nemeth Emma Detwiler Megan Gallagher Breyana Cline Brooklynn Collins Kyra Hill Brynn Shoup-Hill Tori Eldridge Maci Hershberger Makenna Hershberger Joelle Hochstetler Morgan Priebe Meggy VanHooser</p> <p><b>Coaches</b></p> <p>Shaun Hill Derek Gilreath Lindsay Erba Sarah Miller Kayla Gingerich</p> <p><b>Managers</b></p> <p>Ella Potter Sasha Ramos Ainsley Cain</p>	<p>For winning the Northern Lakes Conference Championship</p>

# Joint City Council- School Board Meeting Public Construction Projects

1. Railroad / Quite Zone Update
2. City Projects Affecting Schools
3. INDOT Projects Affecting Schools



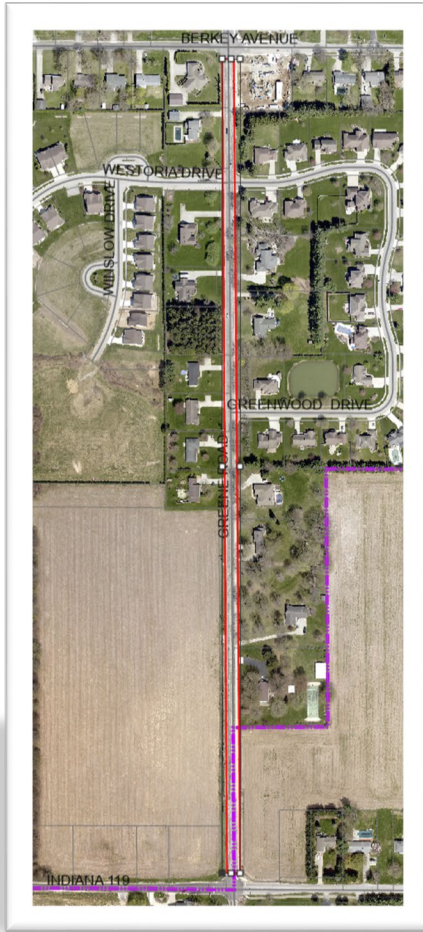


- 1.) Keep your heat on and the temperature constant
- 2. Insulate pipes
- 3.) Open cabinet doors when there is plumbing on outside walls
- 4.) Seal cracks on openings in your structure
- 5.) Drip water from your interior faucet
- 6.) Close the garage door to keep heat inside your structure

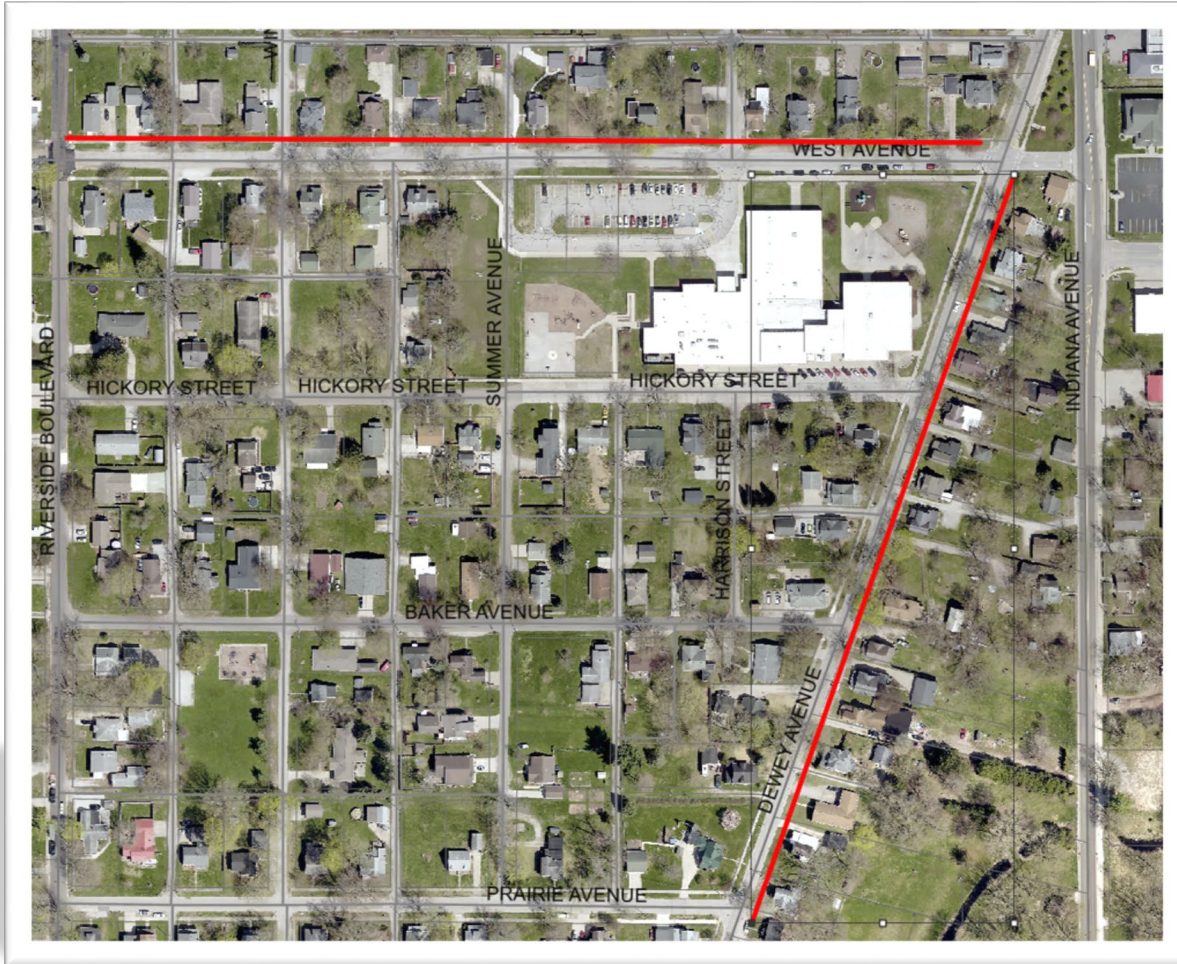


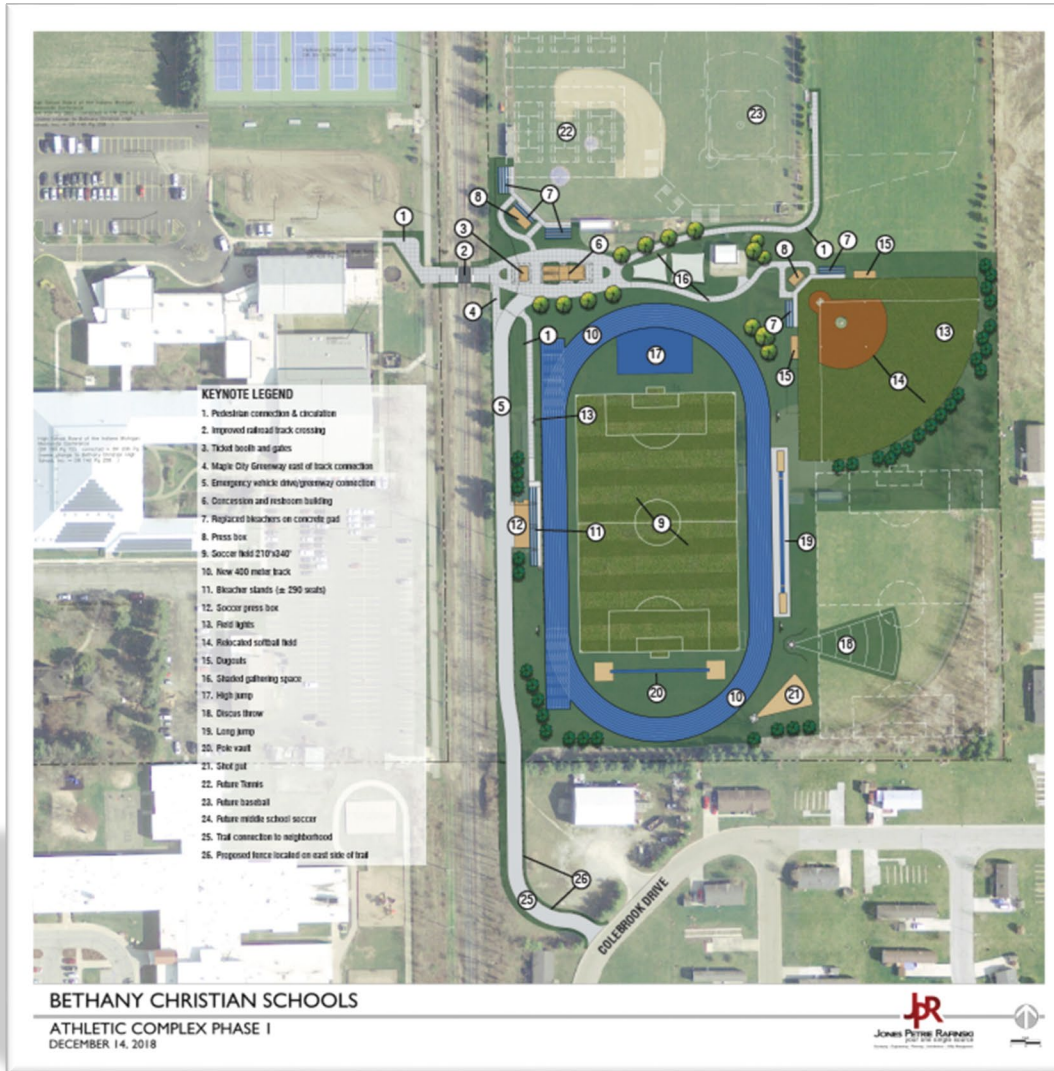
- Quiet Zone anticipated in 2022
- 8 Crossings have been improved
- 3 Crossings have been closed
- Madison St. crossing to be improved in 2021
- Delineators and pedestrian mazes will be added to deter drivers from going around the gates in 2021





- Work Tasks
  - Pavement milling & resurfacing
  - Pedestrian path concrete panel replacements
  - Pavement restriping







- Project Goals
  - Full road reconstruction
  - New curb & gutter
  - New pavement
  - Storm sewer improvements

- Project Goals

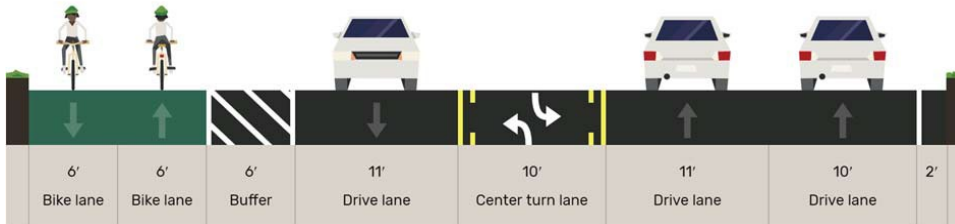
- Full road reconstruction
- New curb & gutter
- New pavement
- Storm sewer improvements



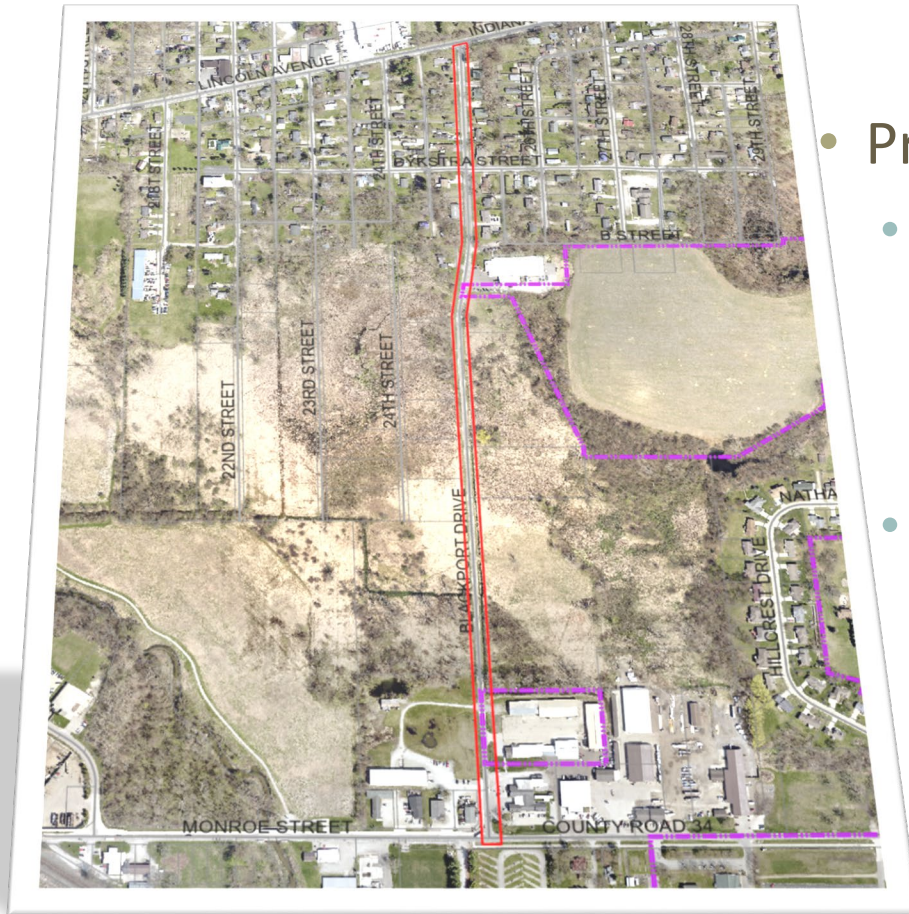


- Summer 2021
  - Full road reconstruction
  - New water main
  - New storm sewer



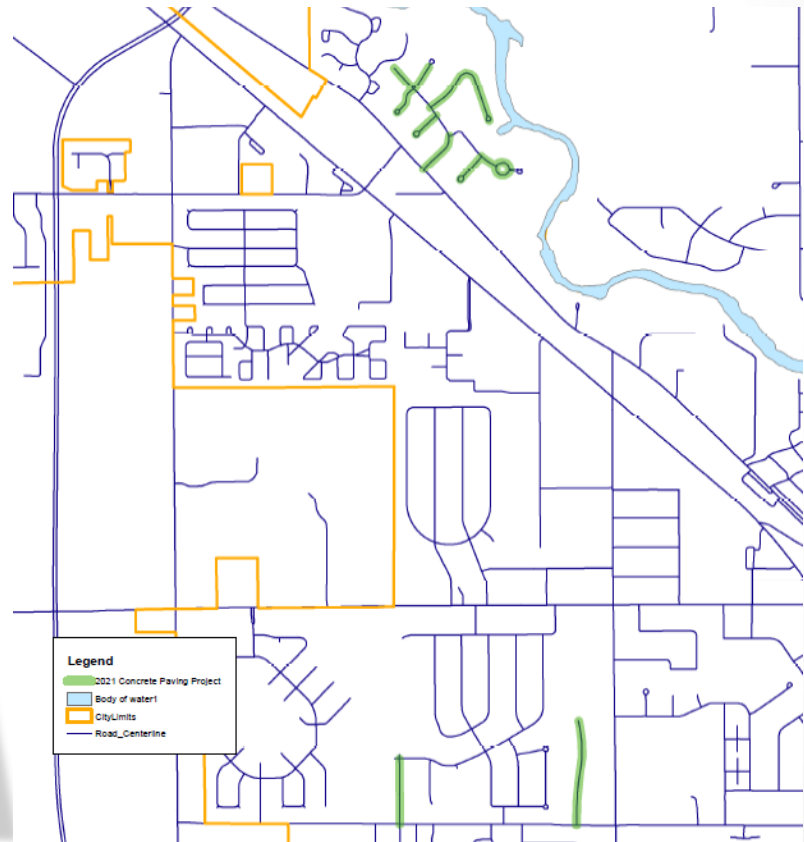


- Implementation Plan
  - 2021 Public Discussions
  - 2021 Phase 1 – Indiana to East side of bridge
  - 2022 Phase 2 – Bridge to 8<sup>th</sup> St.
  - 2023 Phase 3 – 8<sup>th</sup> St. to the Pumpkinvine Nature Trail



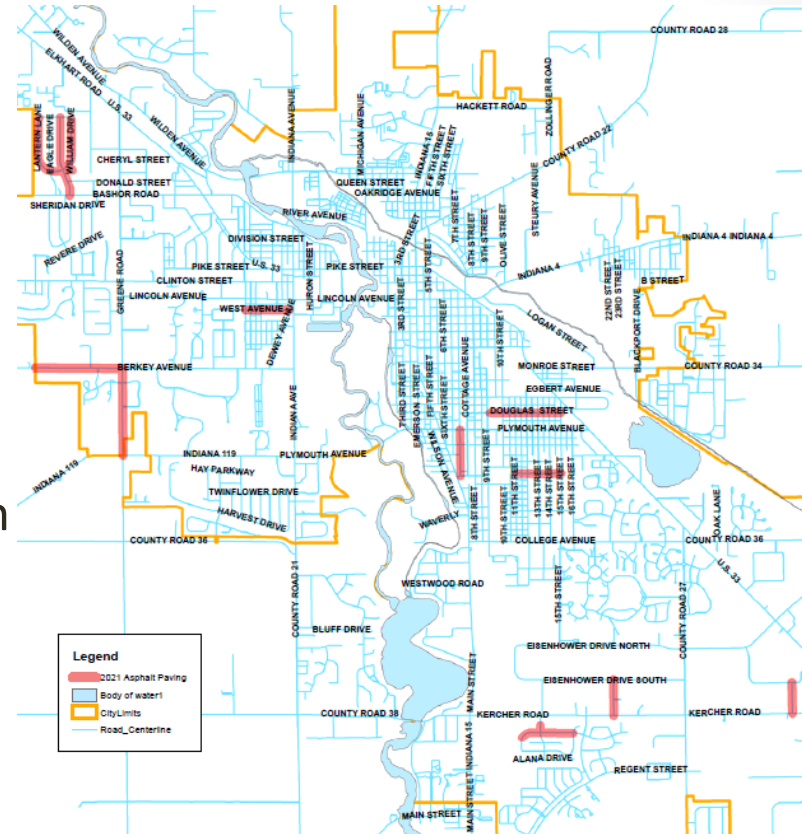
- Project Goals
  - Construct a pedestrian path to increase neighborhood connectivity and improve public safety
  - Roadway reconstruction

- Areas that will have select concrete road repair:
  - Pickwick Subdivision
  - Constitution Ave.
  - Tanglewood Dr.



- Areas that will have select asphalt road repair:

- Lantern Ln.
- William Dr.
- Colonial Manor Dr.
- Berkey Ave. – West of Greene
- Greene Rd. – South of Berkey
- West Ave. – Riverside to Indiana
- Douglas St. – 9<sup>th</sup> St. to 15<sup>th</sup> St.
- Seventh St. – Franklin to Plymouth
- Adams St. – 11<sup>th</sup> St. to 15<sup>th</sup> St.
- Messick Dr.
- Colorado St.
- Lombardy Dr.

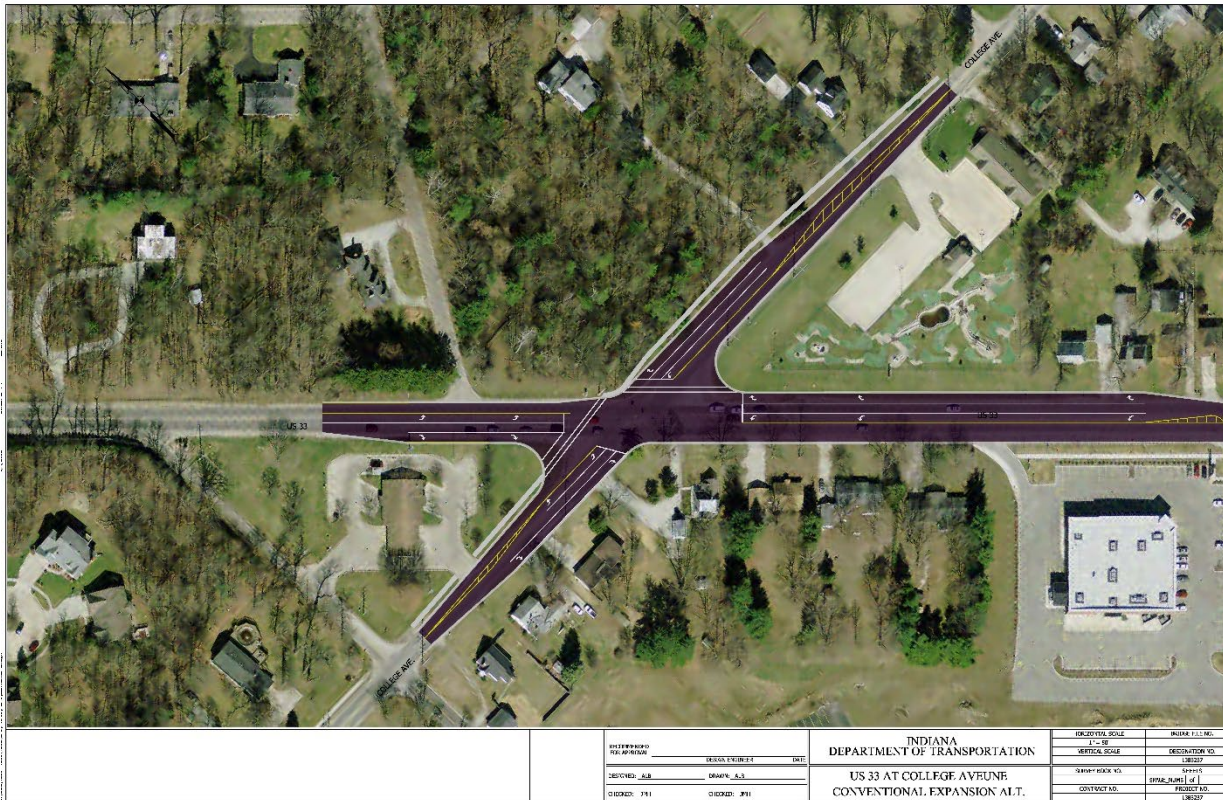




- College Ave. & U.S. 33 Intersection – Des. No. 1383237  
(July 2020 - May 2021)
- SR 119 Bridge Replacement – Des. No. 1602099 (2022)
- U.S. 33 Improvements – Monroe Street to Kercher Road  
(Funding request was made for a second time)



- College Ave. & U.S. 33 Intersection – Des. No. 1383237 (July 2020 - May 2021)





Thank You!

*Transportation*

*Walk Zones & Community  
Hub Stops*

January 25, 2021



## What is a Community Hub Stop?

- A pick-up point for a large group of GMS and GHS students.
- Utilized in densely populated areas or housing developments.

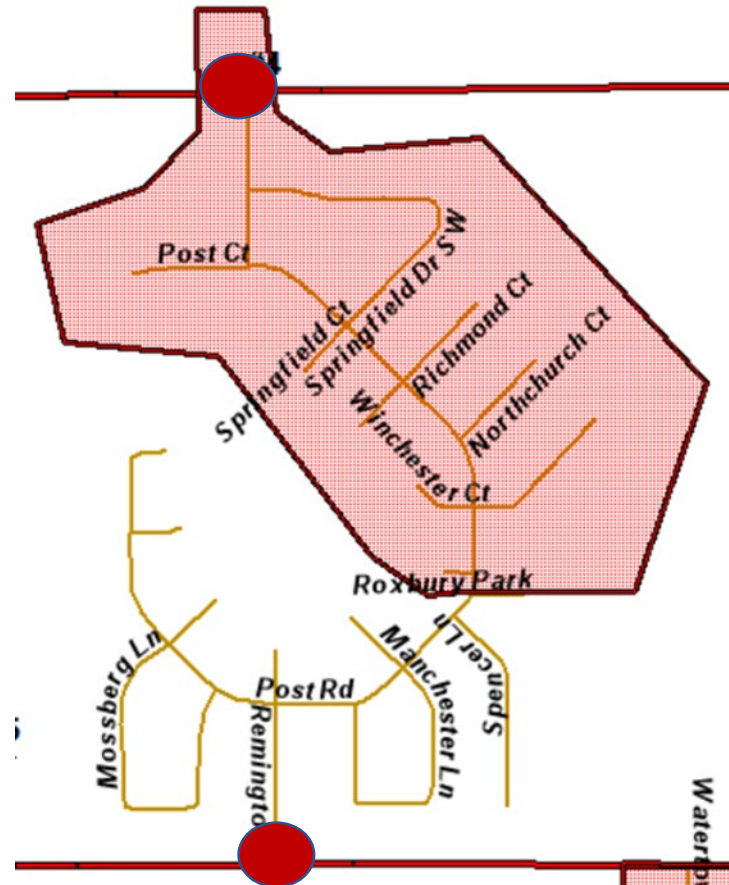
# *Busing*

## Purpose for community hub stops

- Fewer stops lessen the impact on traffic flow.
- Fewer number of buses is less confusing for students.
- Shorter overall time on the bus.

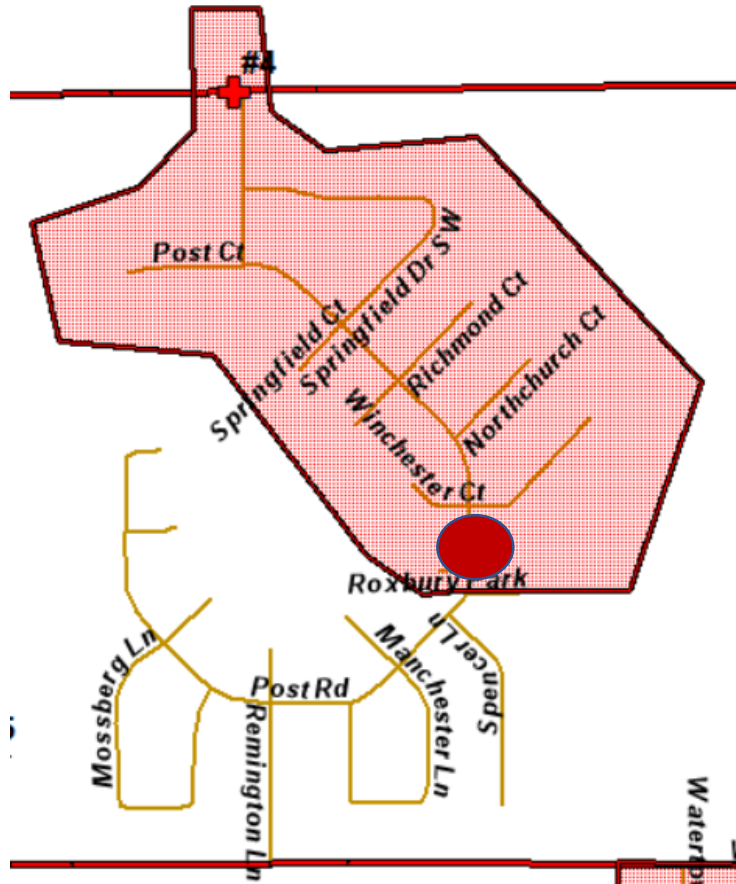
# Busing

## Current Roxbury bus stops



# Busing

## New Roxbury hub stop



The new community hub stop will increase student safety by locating within the park and off Clinton St. and Bashor Rd.

# *Busing*

## Other community hub stops

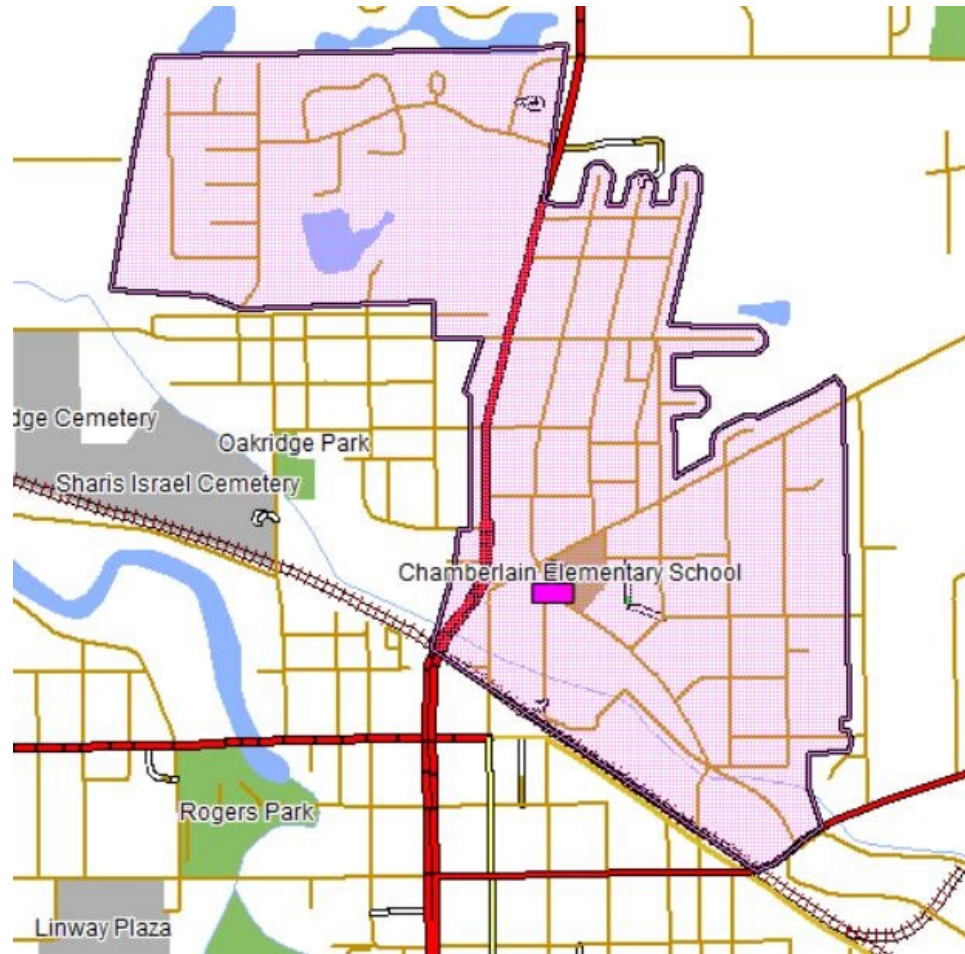
- Hub stops will be utilized throughout the rest of the district by locating them at the elementary schools.
- The areas that use hub stops are determined by the elementary walk zones for GMS and GHS students
- GMS and GHS students in the walk zone of the elementary will depart from the school.

# *Walk Zones*

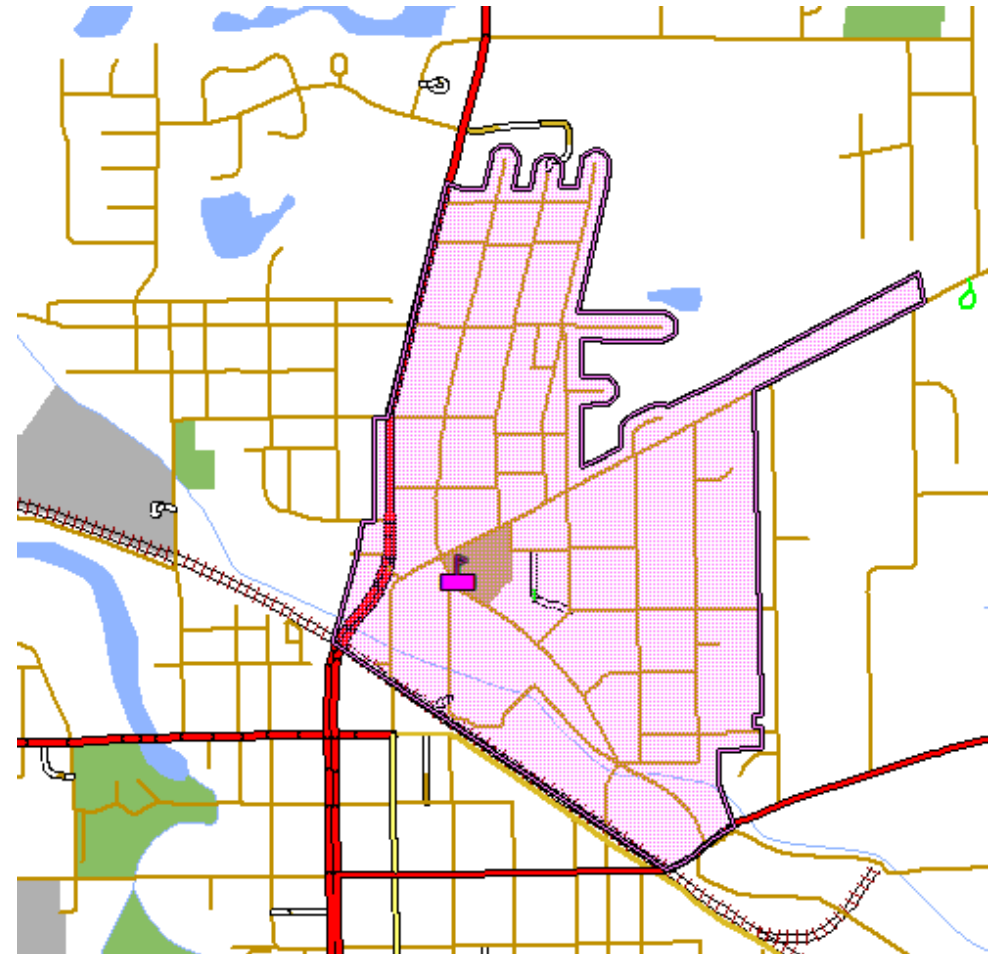
## Shorter walk zones

- Elementary walk zones will change from 1 mile to .75 miles.
- GMS will also be .75 miles.
- GHS will stay at 1 mile.
- All walk zones will be calculated by foot path instead of “as the crow flies”.
- This will shorten the walk zone areas.

# Walk Zone: Chamberlain

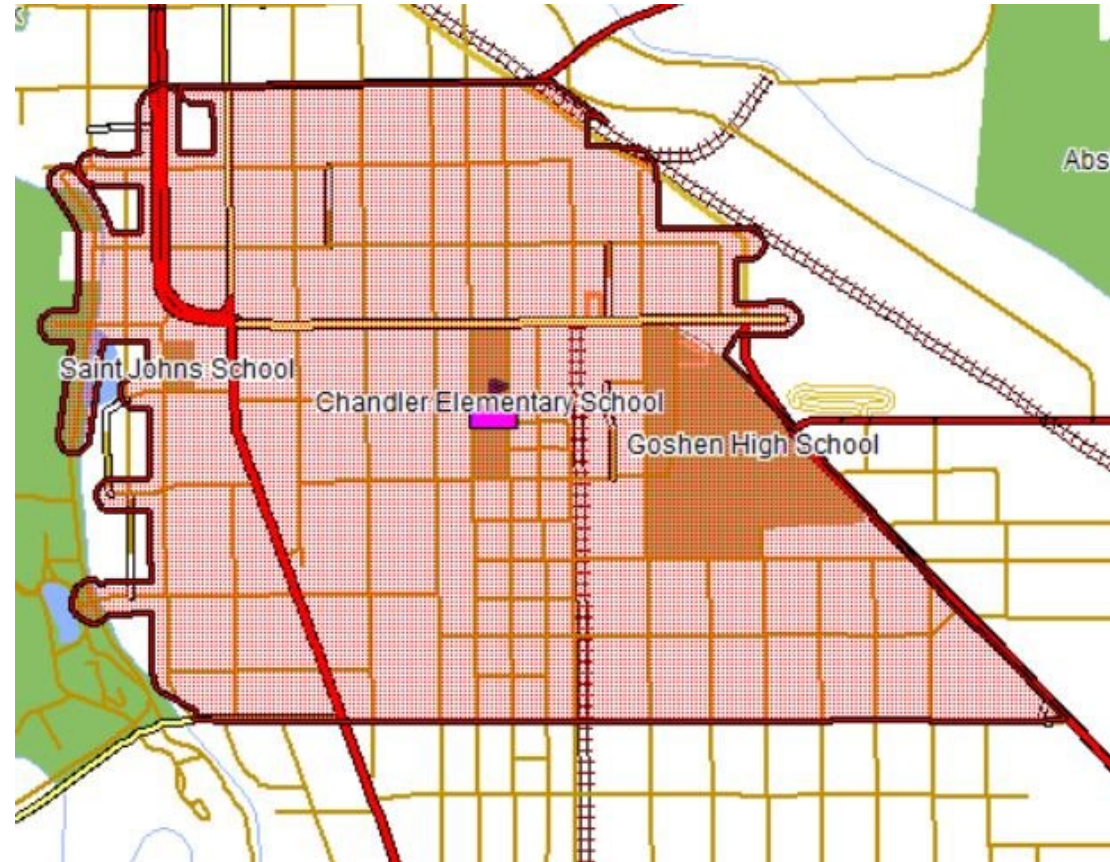


1 Mile Walk Zone



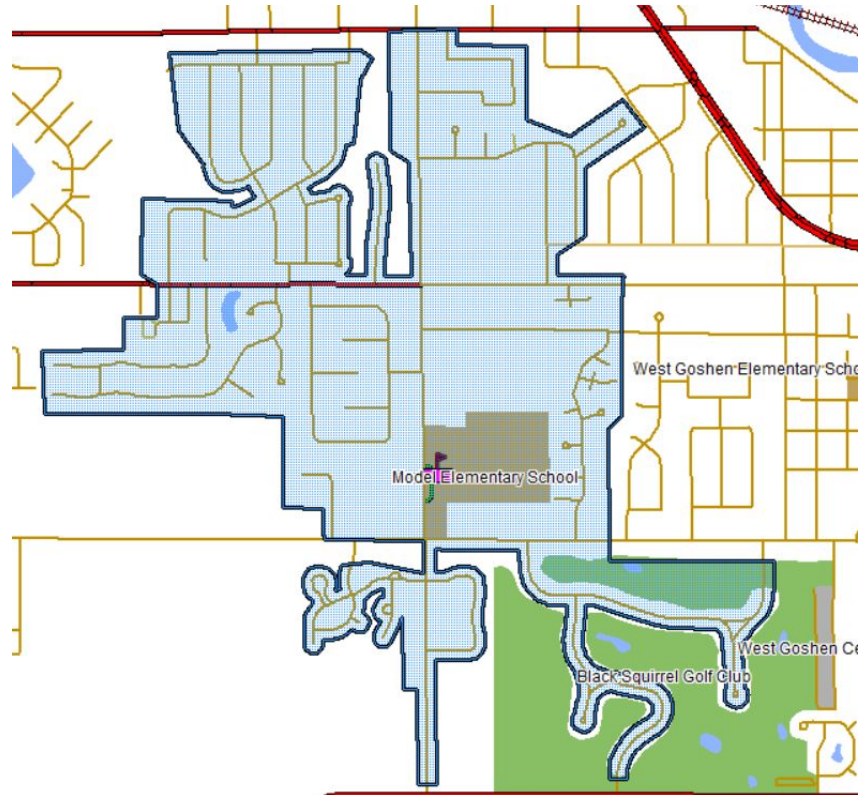
.75 Mile Walk Zone

# *Walk Zone: Chandler*

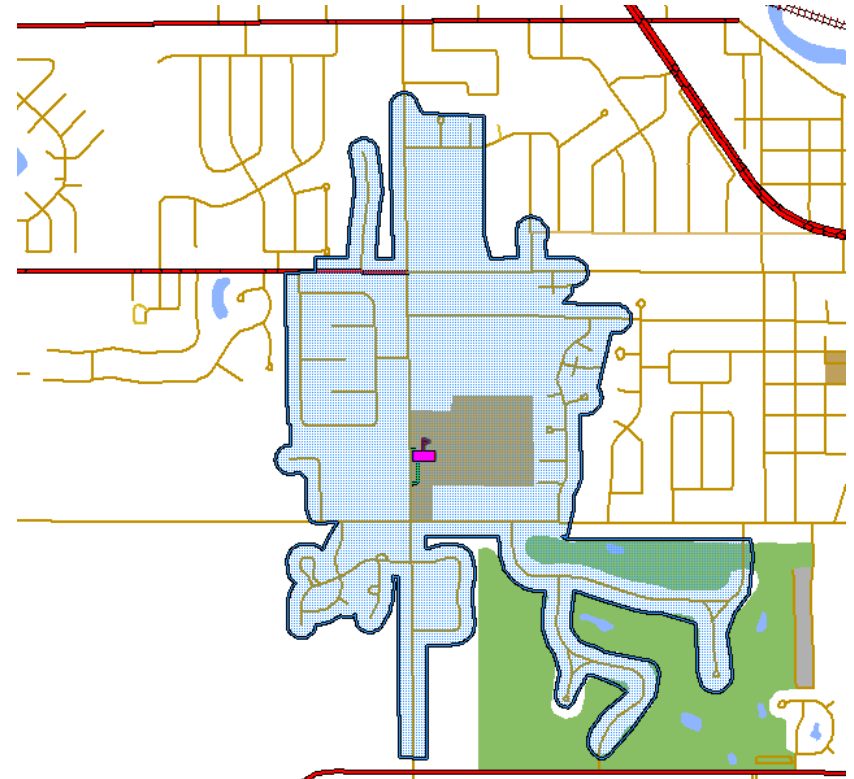




# Walk Zone: Model

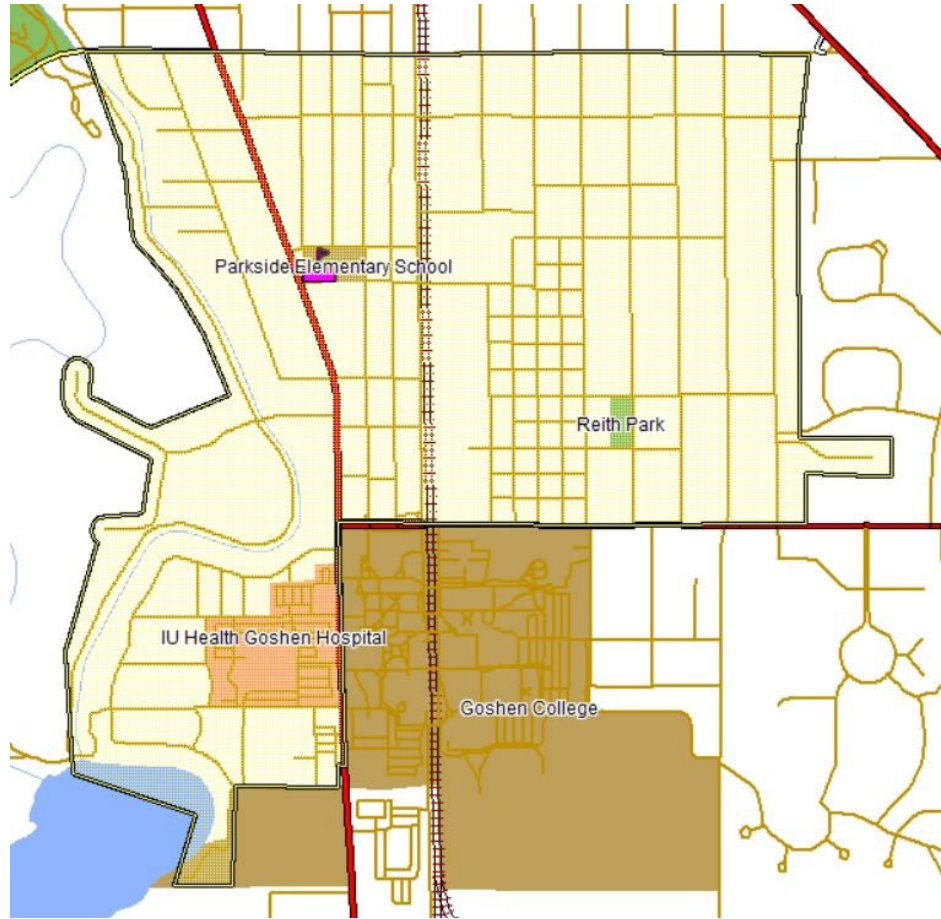


1 Mile Walk Zone

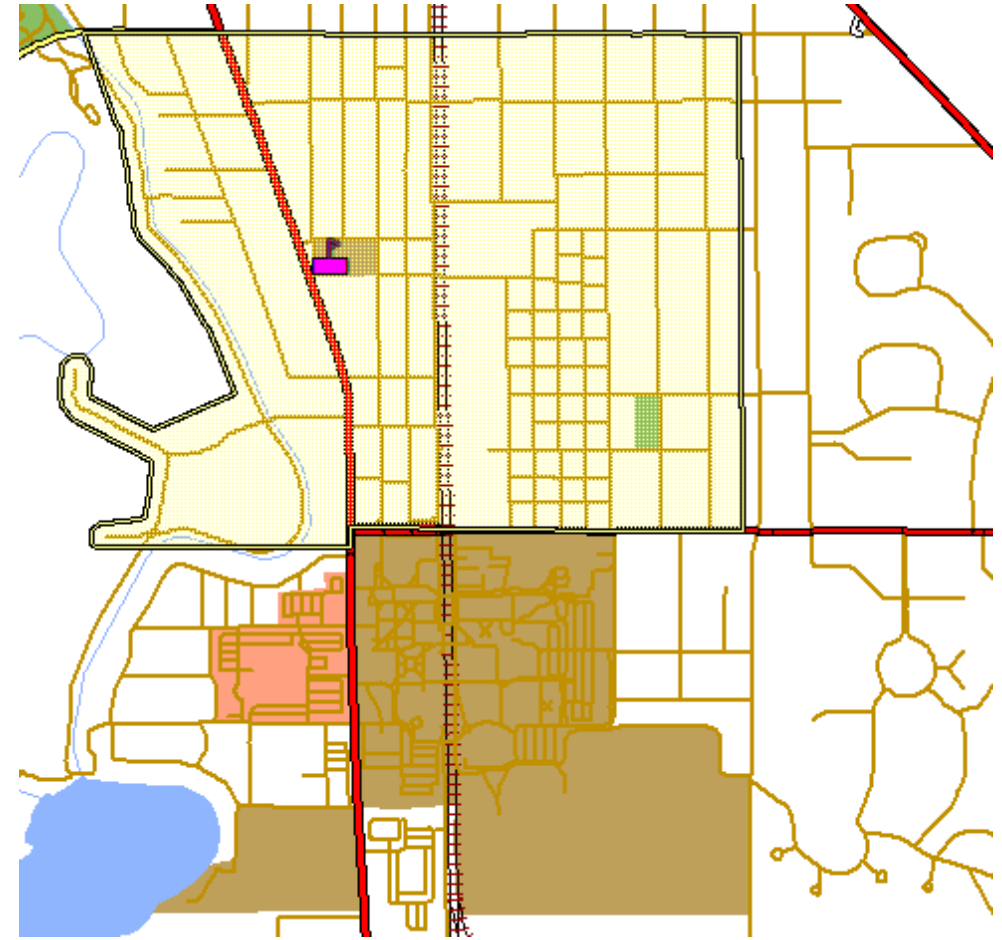


.75 Mile Walk Zone

# Walk Zone: Parkside

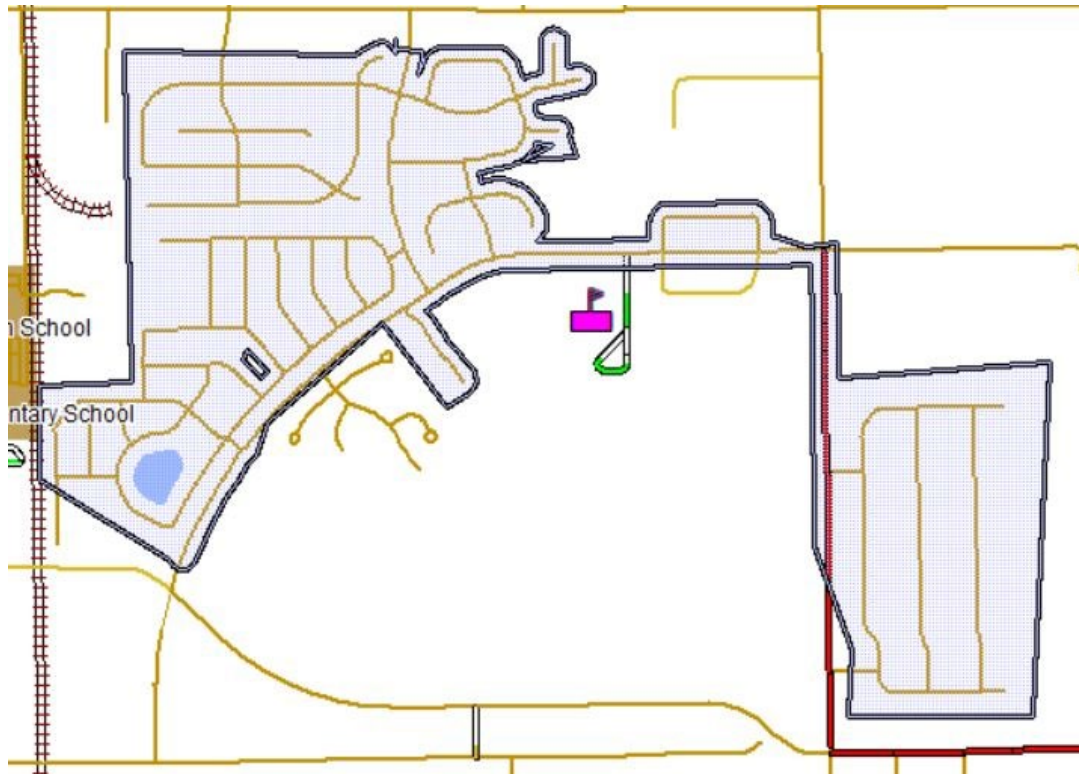


1 Mile Walk Zone

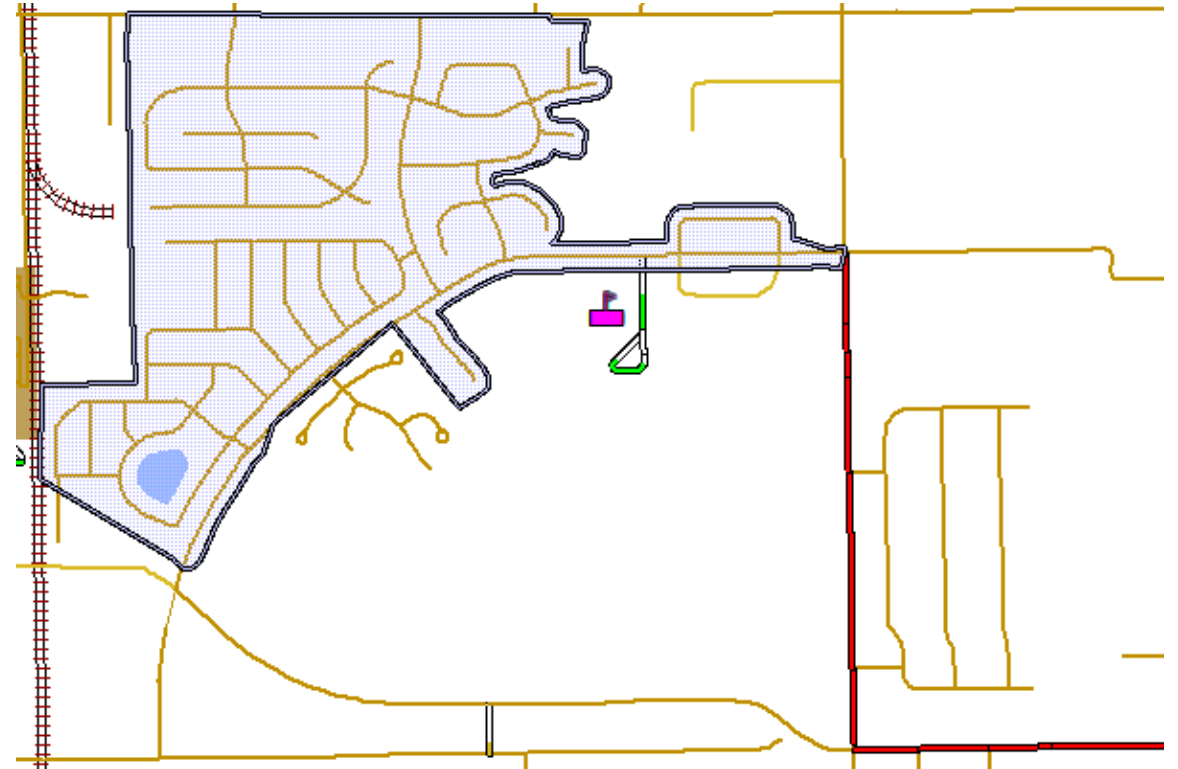


.75 Mile Walk Zone

# *Walk Zone: Prairie View*



1 Mile Walk Zone

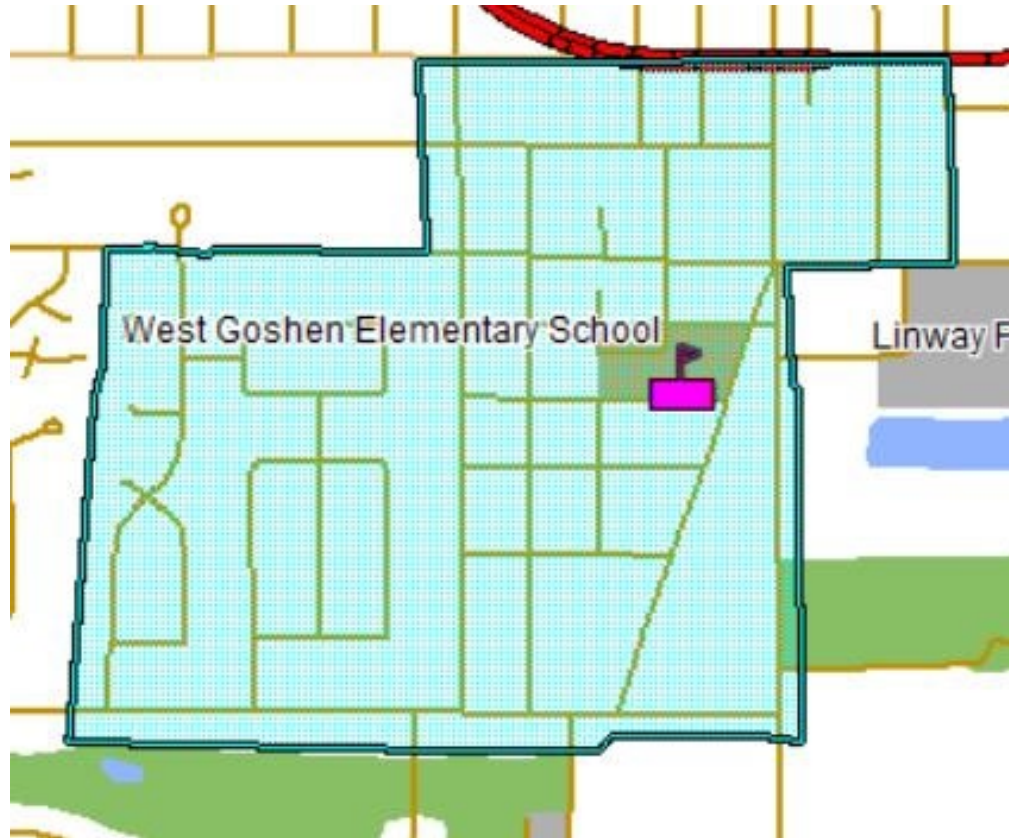


.75 Mile Walk Zone

# *Walk Zone: Waterford*

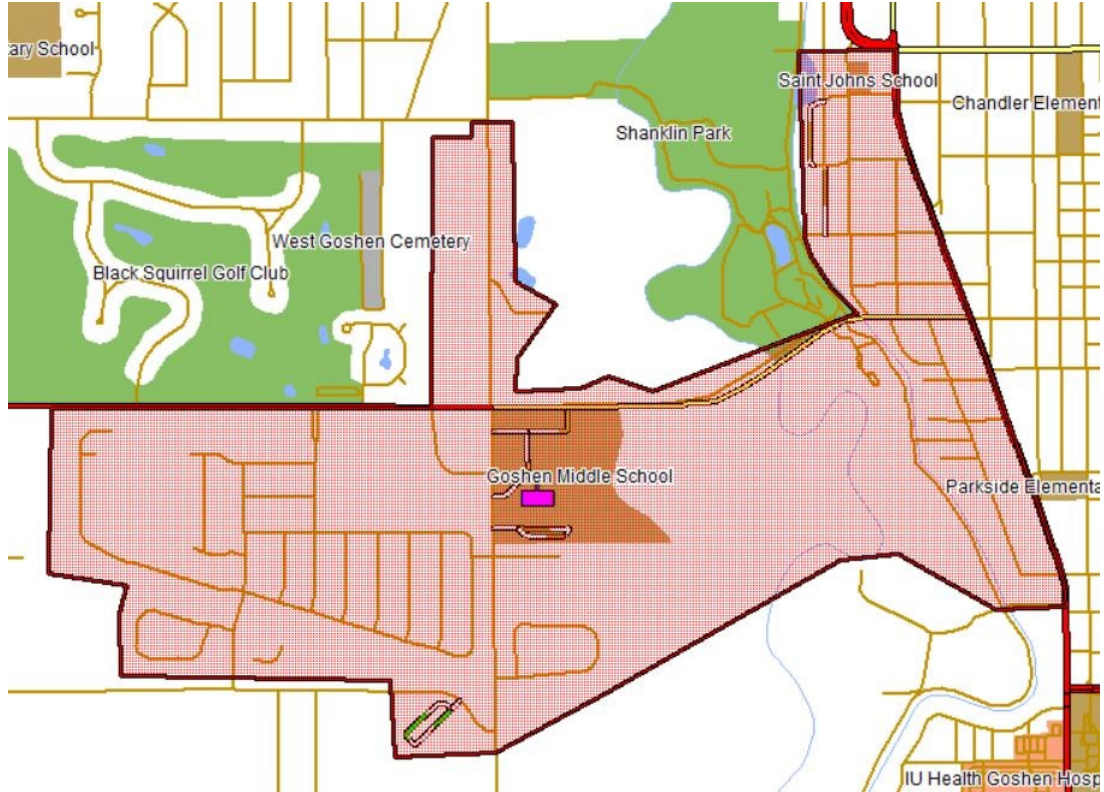
Waterford does not have a walk zone

# *Walk Zone: West Goshen*

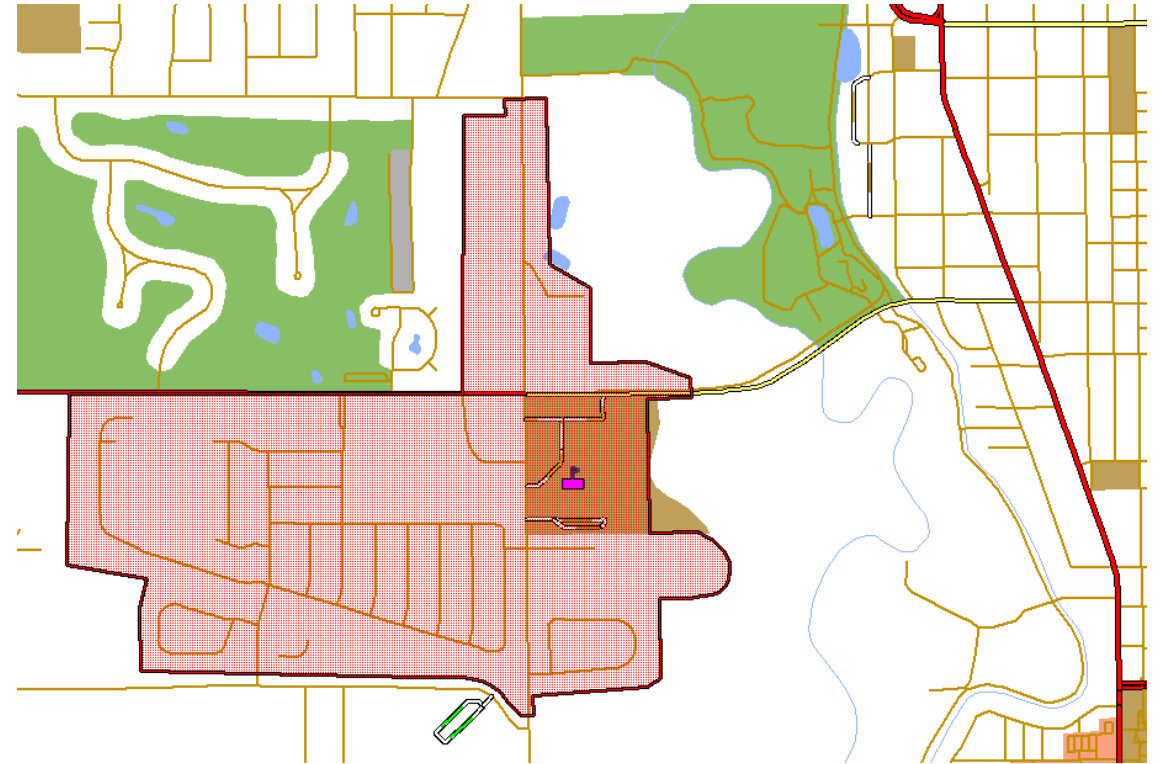


No change in Walk Zone

# Walk Zone: GMS

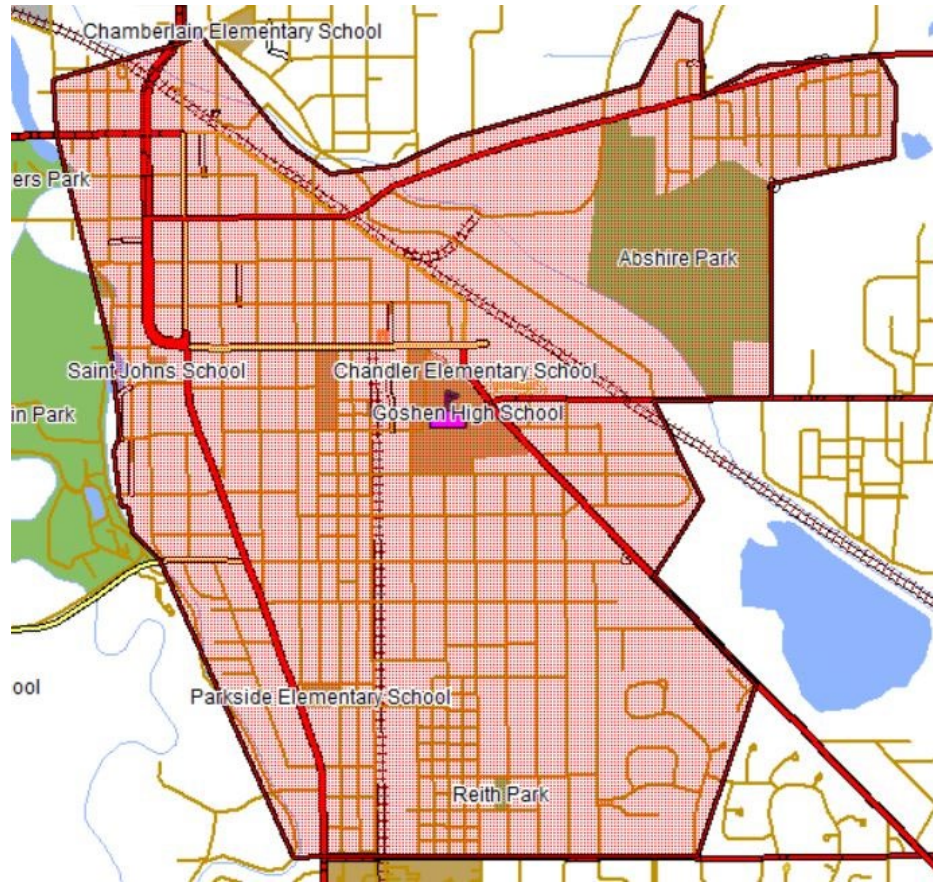


1 Mile Walk Zone

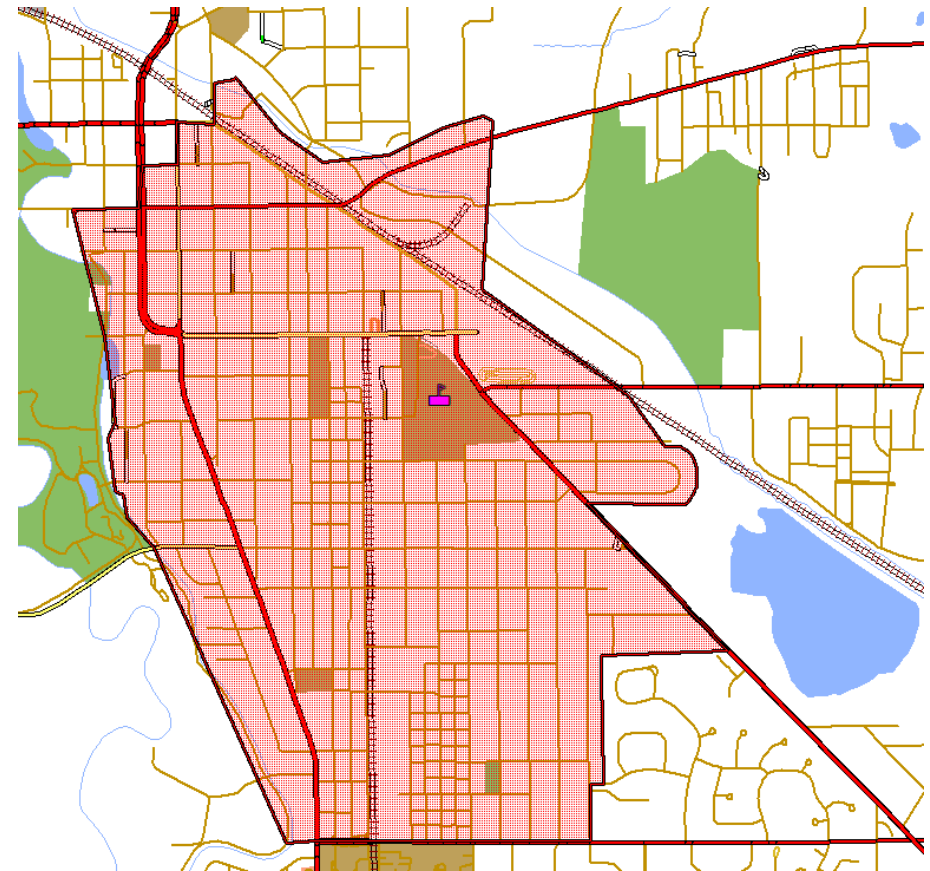


.75 Mile Walk Zone

# Walk Zone: GHS



1 Mile Walk Zone



New 1 Mile Walk Zone



# **Kid Mayor**

Presented by Model Elementary School





# The Why / Purpose:

To help foster a positive relationship between students and community at an early age.

To help promote the importance of our local city government and civic engagement for everyone.



# **Goals:**

**By the end of this program, learners in fourth grade will:**

- participate in a hands-on experience during a mock election process.**
- gain an understanding of how Indiana's officials are elected and how state government functions on a local level.**
- think about how they might participate in local government to affect change in their community.**

- Standard 2:** Students describe the components and characteristics of Indiana's constitutional form of government;
- explain the levels and three branches of Indiana's government;
  - understand citizenship rights and responsibilities;
  - investigate civic and political issues and problems;
  - use inquiry and communication skills to report findings in charts, graphs, written and verbal forms; and
  - demonstrate responsible citizenship by exercising civic virtues and participation skills.

# The Program and Partnership

Any fourth grade student who has a Goshen address.



Goshen Community Schools  
Learning Today. Leading Tomorrow.



\*\*\*This will also include any students who are schooled at home.

# #1

Students must apply



# #2

Students will make a  
Video. Just 3 minutes!



# #3

Videos reviewed by  
Community Committee!



# #4

Committee chooses  
Finalists.



# Campaign to be Kid Mayor BEGINS!





When...the whole school year!



What...fun events with Mayor Stutzman!





Entry doc to help teachers.



Determining what students know.



Creation of the rubric.



But first.....



# The Why / Purpose:

To help foster a positive relationship between students and community at an early age.

To help promote the importance of our local city government and civic engagement for everyone.



# Goshen Housing Developments

# Westplains Phase 2

- 8 One-Bedroom Apartments
- Income-based Affordable Housing for Oaklawn Patients



# River Art Development

- Hawks North – 19 Apartment Units
- New Apartments – 52 Units
- \$14 Million Investment
- 2021/2022 Construction



# Millrace Townhomes

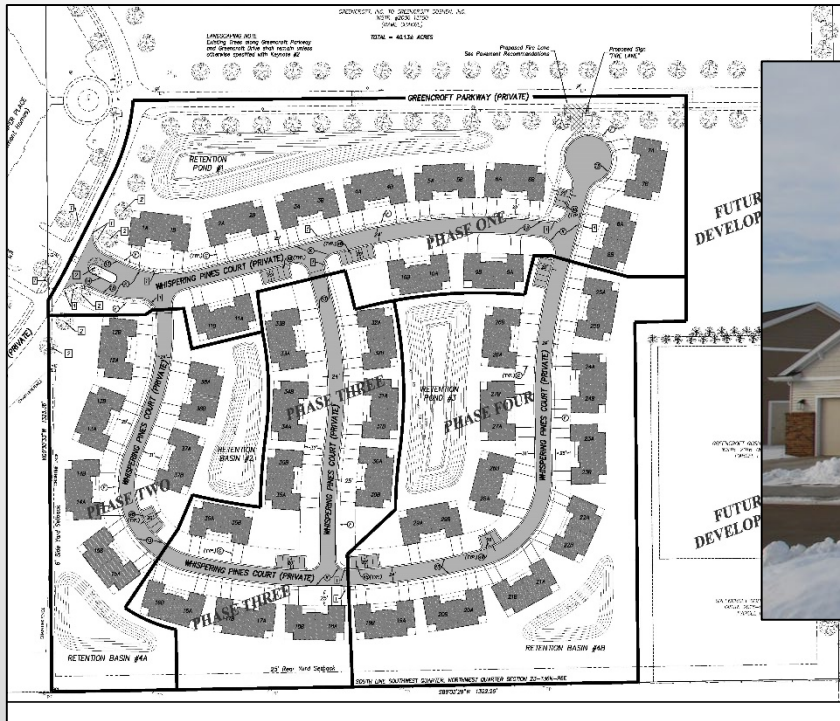
- 16 Townhomes
- \$4.2 Million Investment
- 2021/2022 Construction





# Greencroft – Whispering Pines

- 65 attached and detached single-family homes
- Senior Independent Living
- Under Construction





# Habitat for Humanity of Elkhart County

- Two Single-Family Homes on Hickory Street
- First home is under construction



# Green Oaks of Goshen

- 120 Assisted-Living Apartment Units
- Serving low to moderate income seniors
- For residents who cannot live independently



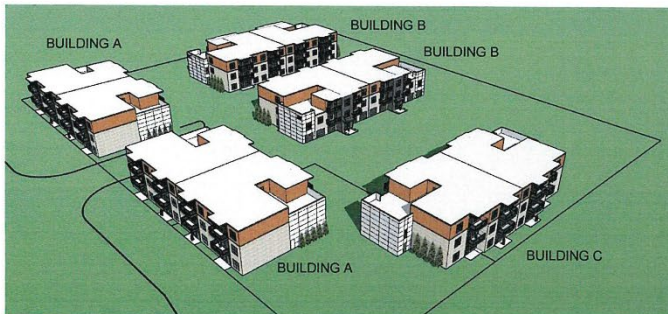
# Goshen Interfaith Hospitality Network

- Housing for homeless individuals and families
- Final location TBD
- Construction 2022



# Indiana Avenue Apartments

- Approximately 60 units
- Construction 2021/2022
- Market-Rate Rent



AERIAL VIEW FROM CORNER



VIEW BETWEEN BUILDING "B" TYPES

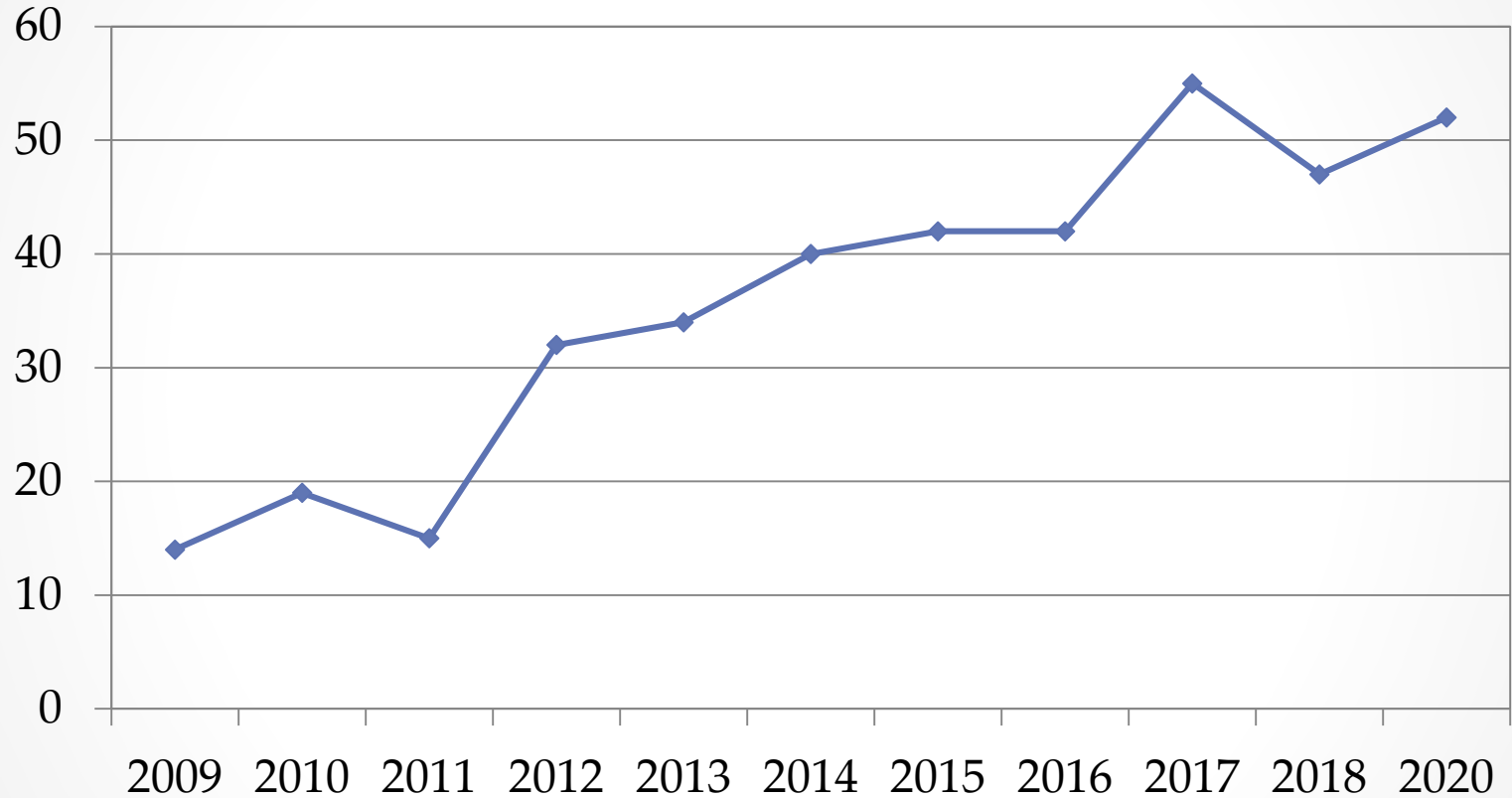


VIEW AT ENTRANCE DRIVE



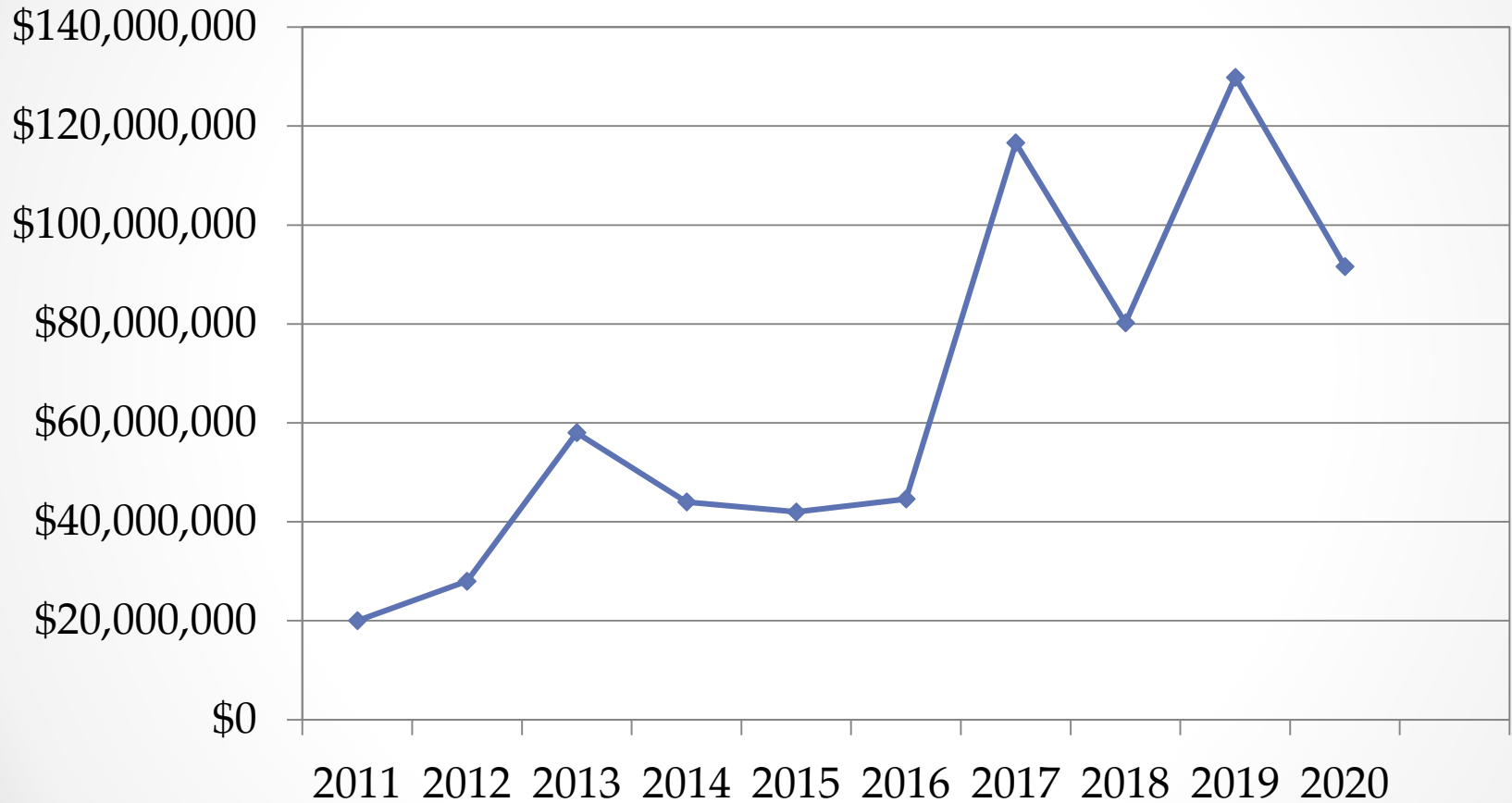
VIEW FROM CORNER OF INDIANA & PLYMOUTH

# Single Family Homes



*2020 - 52 New Homes*

# Total Building Permit Values By Year





# RE-OPENING PLAN

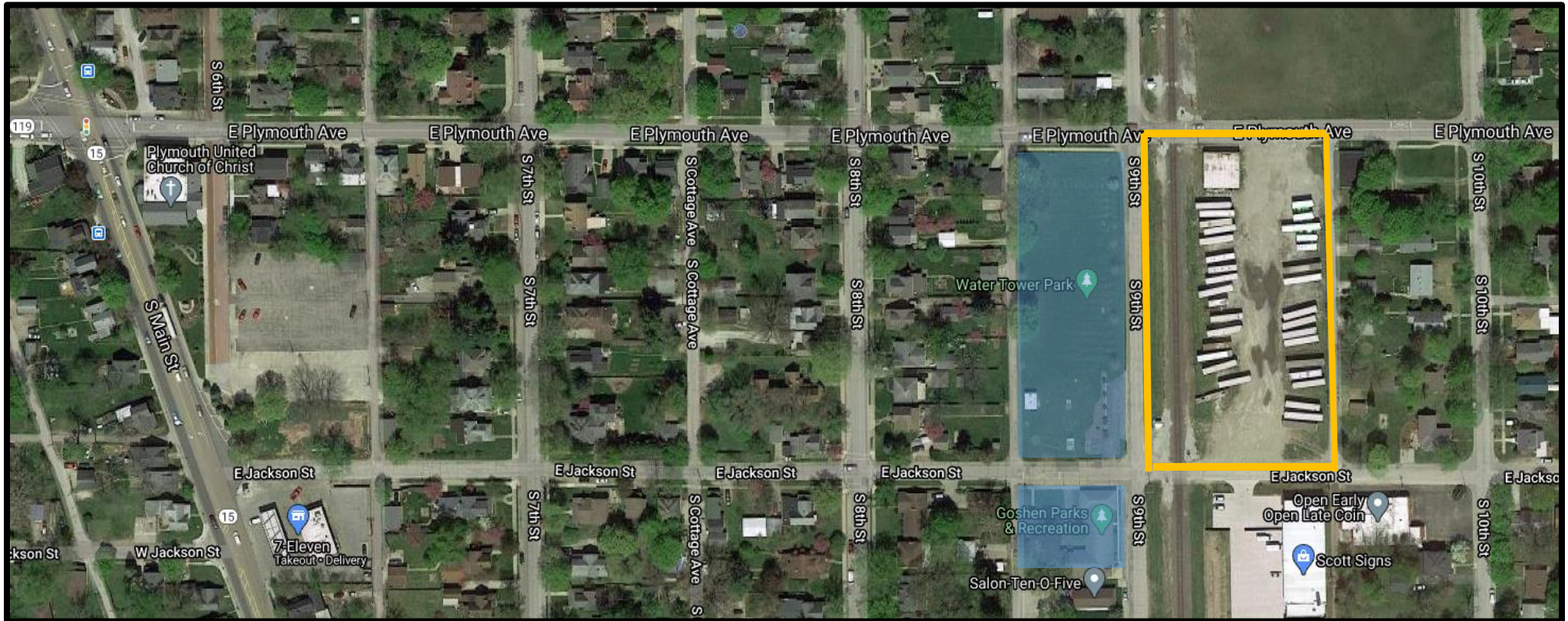
## → AT A GLANCE

Following State, County and Local orders and guidelines, stages are subject to change based on new information. Additional restrictions could apply. For more information, visit our website at [goshenindiana.org](http://goshenindiana.org).

	<b>Blue</b> (Minimal Spread)	<b>Yellow</b> (Moderate Spread)	<b>Orange</b> (Moderate to High Spread)	<b>Red</b> (High Spread)
<b>Facility Rentals &amp; Reservations</b>	UP TO 25 PEOPLE OR AN APPROVED COVID-19 SAFETY PLAN FROM THE ELKHART COUNTY HEALTH DEPARTMENT			
<b>PLAYGROUNDS SPORTS FIELDS, COURTS, SKATE PARK</b>	OPEN WITH POSTED RECOMMENDATIONS			
<b>TRAILS &amp; GREENSPACE</b>	OPEN WITH POSTED RECOMMENDATIONS			
<b>PUBLIC RESTROOMS</b>	OPEN WITH POSTED RECOMMENDATIONS			
<b>SHANKLIN POOL</b>	OPEN WITH APPROVED COVID-19 SAFETY PLAN FROM THE ELKHART COUNTY HEALTH DEPARTMENT			
<b>SPLASH PADS</b>	OPEN WITH POSTED RECOMMENDATIONS			
<b>COMMUNITY GARDENS</b>	OPEN WITH POSTED RECOMMENDATIONS			
<b>SPECIAL EVENTS</b> Triathlons, Dances, Fishing Derby, Movies, Maple City Walk, etc.	OPEN WITH APPROVED COVID-19 SAFETY PLAN FROM THE ELKHART COUNTY HEALTH DEPARTMENT			
<b>SPORT LEAGUES</b>	OPEN WITH APPROVED COVID-19 SAFETY PLAN FROM THE ELKHART COUNTY HEALTH DEPARTMENT			
<b>DISCOVERY DAY CAMP</b>	OPEN WITH APPROVED COVID-19 PLAN FROM THE ELKHART COUNTY HEALTH DEPARTMENT			
<b>ACTIVITIES &amp; CLASSES</b>	OPEN WITH APPROVED COVID-19 PLAN FROM THE ELKHART COUNTY HEALTH DEPARTMENT			

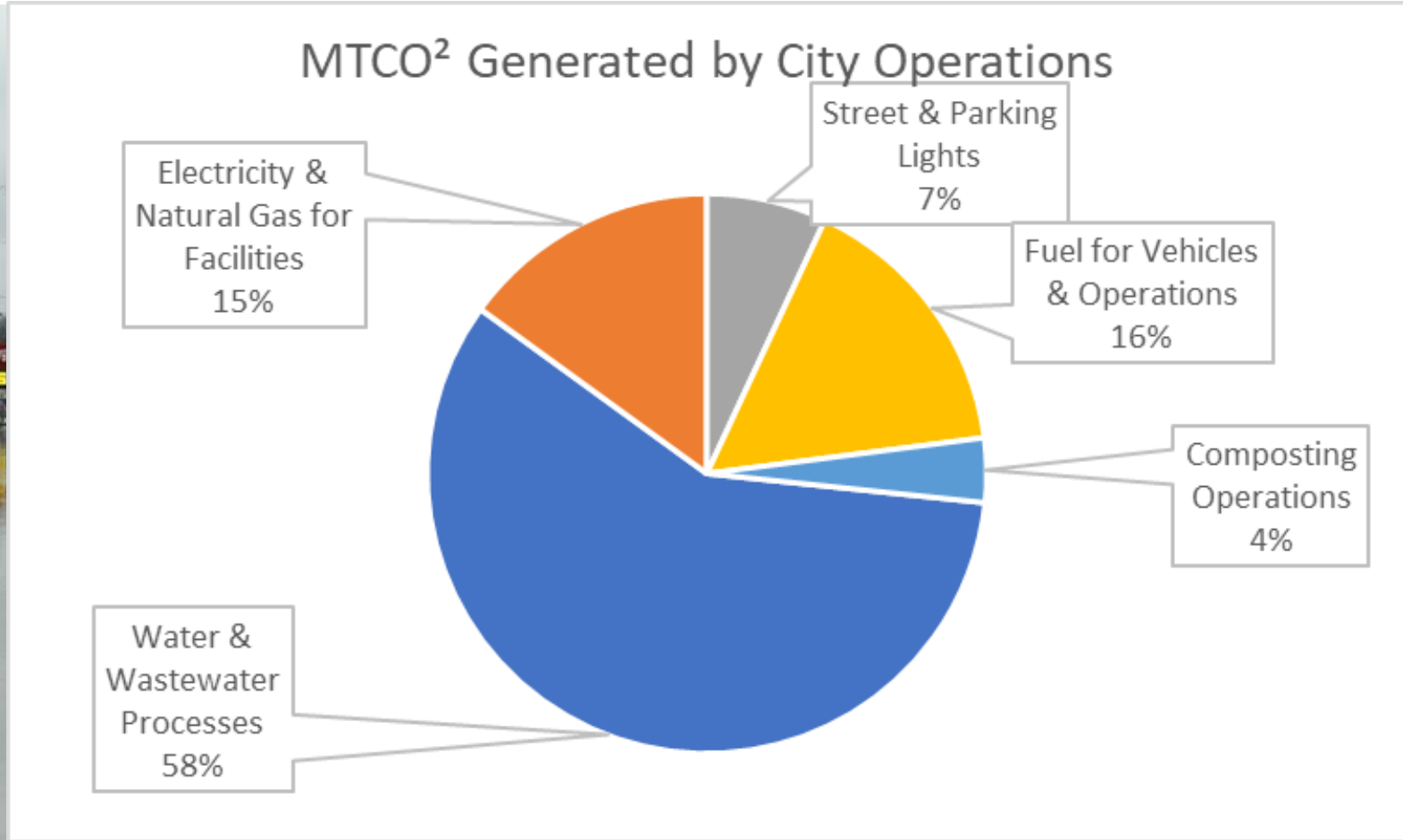
*This graphic was created on Monday, February 16, 2021, it will be updated as new information is received. If you see different information published on a more recent date, please use the most current guidelines. Please follow Goshen Parks and Recreation on social media for the most current information.*

## Proposed Parks & Recreation Maintenance Shop Location





# Department of Environmental Resilience

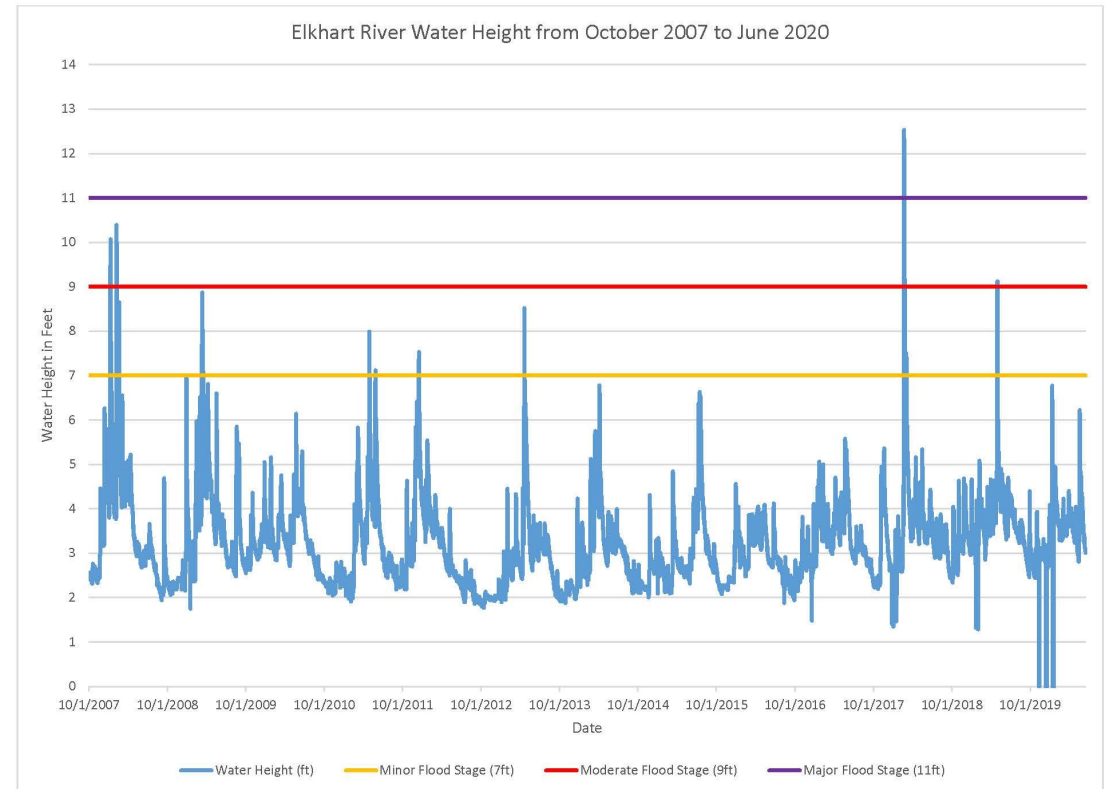


Pike Street Flooding, February, 2018, Photographer: Andrew Kauffman

# 2021 Projects

## • Flood Resilience Plan

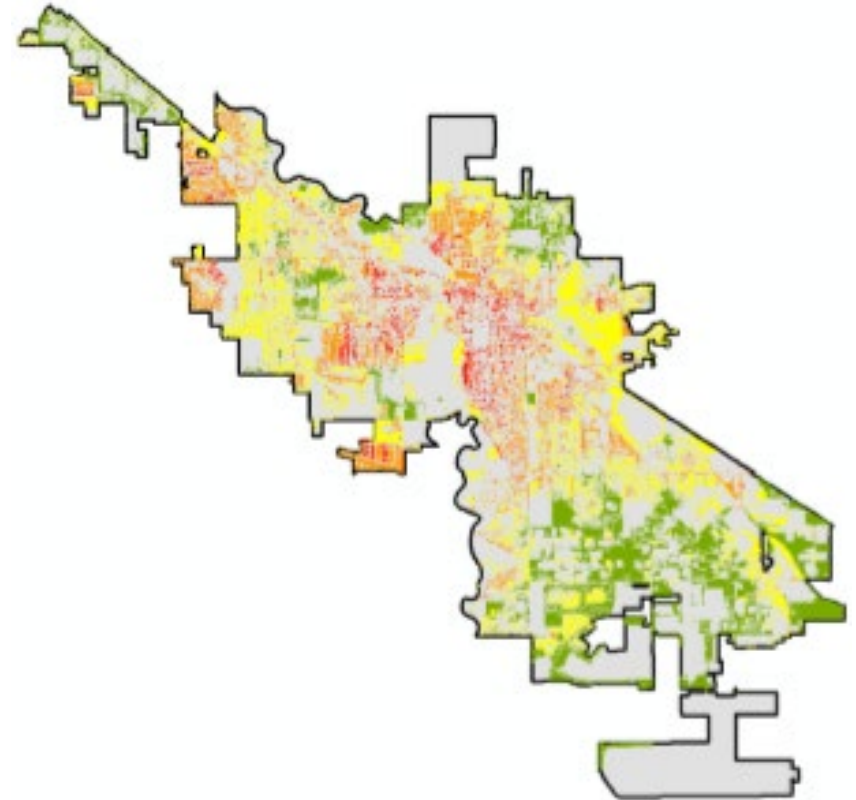
- Contracted with Christopher Burke, LLC
- Comprehensive review of policies, ordinances and practices.
- Recommendations for steps Goshen should take toward future flood resilience.
- Scheduled completion late spring / early summer.



# 2021 Projects

## • Urban Tree Canopy Assessment

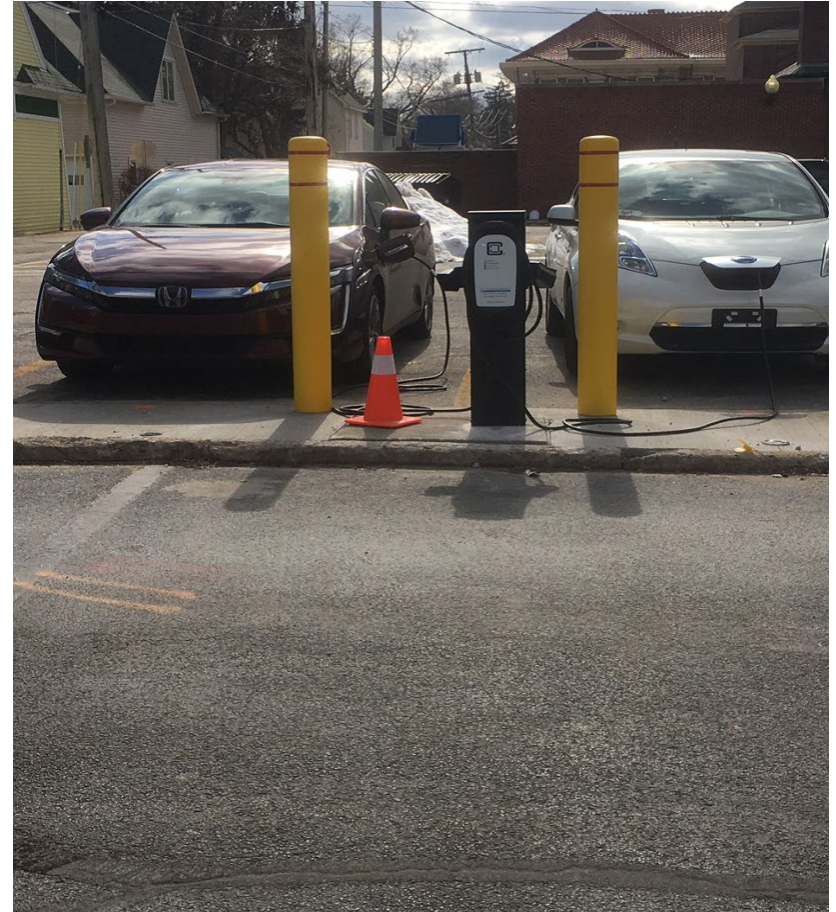
- Update 2013 UTC Assessment
- Track changes in canopy cover and quality.
- Data for progress toward 45% canopy by 2045.
- Planned updates every 5 years.



# 2021 Projects

## • Electric Vehicle Charging Stations

- VW Settlement grant funds via IDEM
- Grant coordinated by MACOG
- Planned installation in Public Parking lot west of Interra Bank.
- Goshen Public Library installation also planned.



# 2021 Projects

## • Trees For Graduates

- 500 trees given away in 2020
- Up to 600 planned for 2021 (including Bethany HS)
- Hazelnut, dogwood, tulip tree, persimmon, honey locust available.

Goshen HS students plant trees at Goshen Airport, 2019



# 2021 Projects: Environmental Education Curriculum

## My Goshen

**Place-based environmental education focused on Goshen.**

- K-6<sup>th</sup> Grade.
- Designed to meet Indiana Academic Standards.
- Designed to increase appreciation for Goshen, awareness of issues, and empowerment.



# Program Scope and Sequence: My Goshen

## Unit Scope and Sequence

<b>Kindergarten</b>	<p><b>Forest Kindergarten:</b> Students explore the outdoors and observe what is around them by entering into a wild area to experience and interact with their new surroundings.</p> <p><b>Source material:</b> <i>Nature Preschools and Forest Kindergartens: The Handbook for Outdoor Learning</i> by David Sobel</p>
<b>Grade 1</b>	<p><b>Nature Around my School:</b> Students take a series of brief “field trips” on their school grounds to explore and investigate plants, animals, and the interdependence of living things.</p> <p><b>Source material:</b> <i>Ten-Minute Field Trips: A Teacher's Guide to Using the School Grounds for Environmental Studies</i> (National Science Teachers Association)</p>
<b>Grade 2</b>	<p><b>Observing the Four Seasons:</b> In a series of four seasonal field trips to the same forest, students explore and document how plants and animals in a forested area change over the course of the seasons.</p> <p><b>Source material:</b> Existing Goshen Parks and Recreation program</p>
<b>Grade 3</b>	<p><b>Community Science:</b> Students act as community scientists, gathering key data from nature in Goshen in order to benefit research on local trees and taking inventory of 2 different ecosystems.</p> <p><b>Source material:</b> <a href="https://www.nationalgeographic.org/idea/citizen-science-projects/">https://www.nationalgeographic.org/idea/citizen-science-projects/</a></p>
<b>Grade 4</b>	<p><b>What’s For Lunch:</b> Students learn about the process of food production, distribution, and preparation by researching the origins of their own school lunches.</p> <p><b>Source material:</b> <a href="http://www.whatsonyourplateproject.org">http://www.whatsonyourplateproject.org</a></p>
<b>Grade 5/6</b>	<p><b>Investigating Environmental Issues and Creating Solutions:</b> Students identify environmental issues, conduct a group research project, and act upon their research results.</p> <p><b>Source material:</b> <a href="https://www.fs.usda.gov/Internet/FSE_DOCUMENTS/stelprdb5107473.pdf">https://www.fs.usda.gov/Internet/FSE_DOCUMENTS/stelprdb5107473.pdf</a></p>

# Goshen Students Lead: Youth Environmental Resolution, 2019



Aimee Ambrose, Goshen News

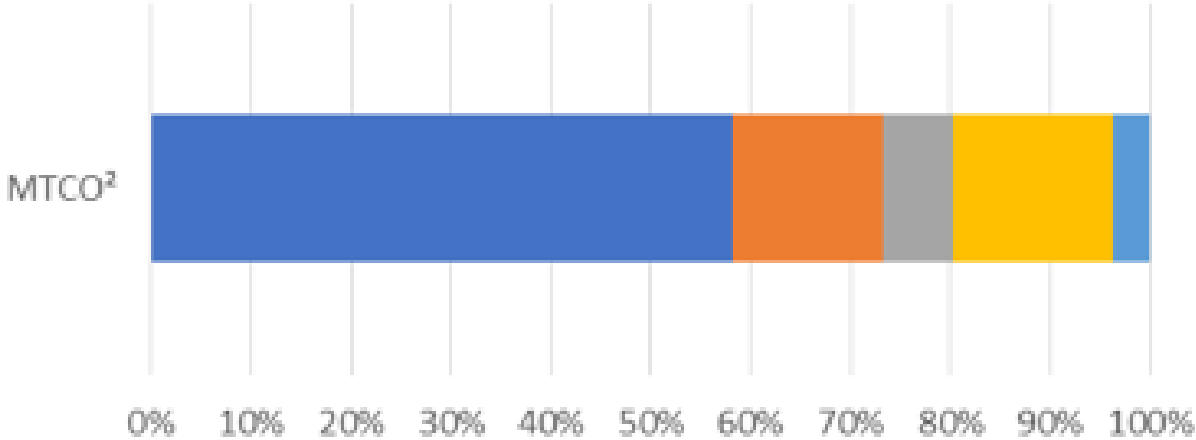
Felix Perez-Diener introduces the Youth Environmental Resolution on April 30, 2019. Other members of the Goshen High School Youth Caucus participated in drafting and presenting the Resolution, which City Council passed unanimously.



# 2021 Projects: Climate Action Plan

**Zero Emissions by 2035 begins here: 9396 MTCO<sub>2</sub>e**

2019 City of Goshen Government Operations Emissions

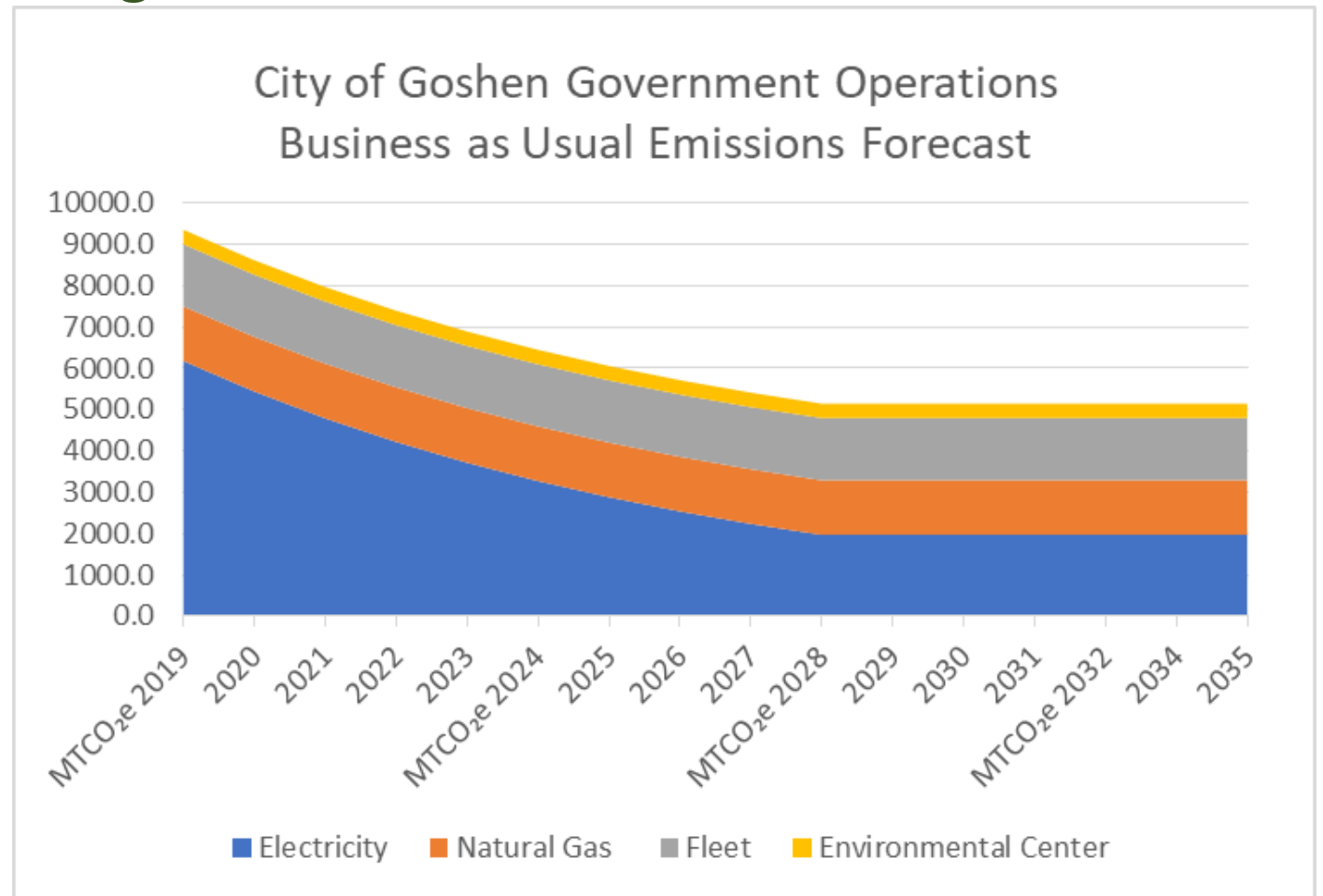


	MTCO <sub>2</sub>
Water & Wastewater Processes	5480
Electricity & Natural Gas for Facilities	1410
Street & Parking Lights	652
Fuel for Vehicles & Operations	1505
Composting Operations	349

# Getting to Zero Emissions

## 9 Strategies

- Energy Management of Buildings and Facilities
- Solid Waste Management
- Sustainable Transportation
- Sustainable Infrastructure
- Utility Processes
- Sustainable Land Use
- Tree Canopy
- Sustainable Energy
- Education

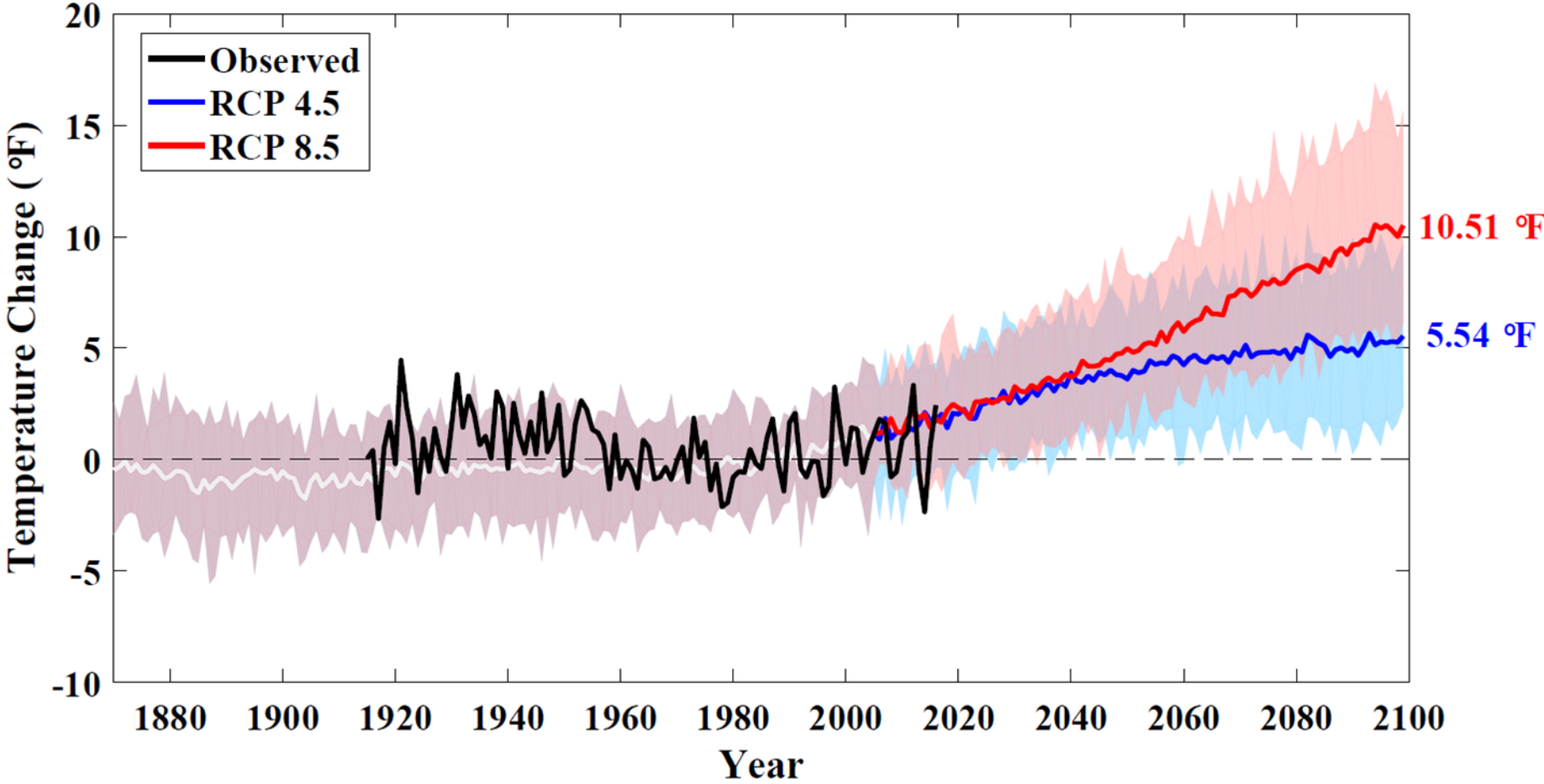


# Potential to Cut Costs Long-term

- **Rieth Interpretive Center Energy Audit and Analysis:** \$5000 investment could yield annual energy savings of \$4,700 and emissions reduction of 53%.
- **Waste Water Treatment Plant Improvements, 2020-21:** Projected annual energy reduction of 1.3 MW electricity yields annual savings of \$111K and emissions reduction of 21%.
- **Solar installations at Prairie View and Waterford Elementary Schools:** Combined generation of 881 kW, estimated annual energy savings of \$97K.



# Annual Temperature Projections for Indiana Based on 31 Global Climate Model Simulations



# ELKHART COUNTY: State of the Climate

Weather records show that Indiana has become warmer and wetter, with more heavy downpours. Indiana scientists have concluded these climate trends will continue and intensify, affecting the health and wellbeing of all Hoosiers.

## Number of >95°F days per year

**1**

PAST

**30**

2050s

## Average hottest day of the year

**95°F**

PAST

**105°F**

2050s

## Average coldest day of the year

**-11°F**

PAST

**-3°F**

2050s

## Projected change in SPRING rainfall

**+16%**

2050s compared to PAST

Above data show a comparison of past and future conditions for Elkhart County, Indiana, except SPRING rainfall which shows statewide average data. Past data are average values from 1971 to 2000. Future data (2050s) are average values from 2041 to 2070 based on a high emissions scenario (assumes no reduction in the addition of heattrapping gases to the atmosphere).



# **Summary of Key Findings:** Health Impacts

- **More heat-related injuries & death**
- **Reduced air quality from ozone**
- **Longer, more intense allergy season**
- **More vector-borne disease pests**
- **Algal blooms & toxic algae**
- **Increase in flood-related injuries & disease**
- **Stress and other mental health impacts**
- **Vulnerable populations at greatest risk**

