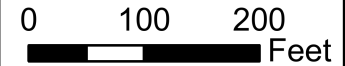
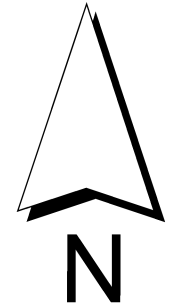


# 2023 City of Goshen Paving Package

## Indiana Ave. from RR Tracks to Wilden Ave.



### Legend

- Full-Depth Reclamation
- Full-Depth Replacement
- Mill and Pave
- Mill and Pave w/ Full-Depth Patching
- Overlay
- Overlay w/ Full-Depth Patching

Street	From	To	Area	Activity
Indiana Ave.	RR Tracks	Wilden Ave.	2,389 sqYd	Full-Depth Reclamation

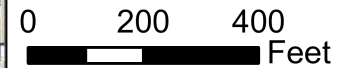
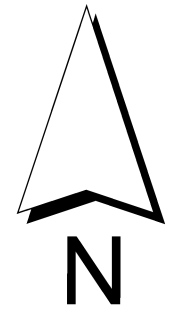
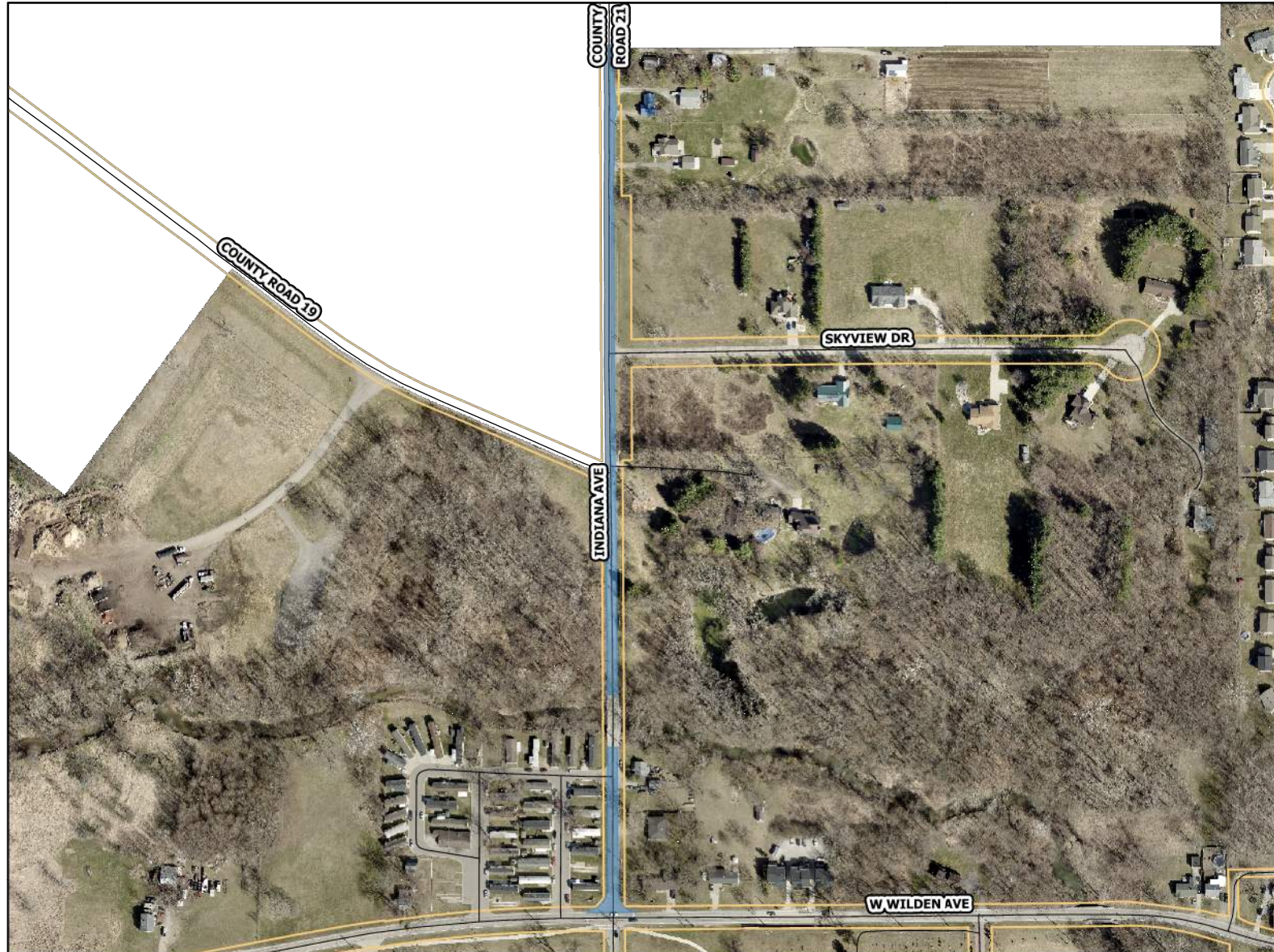
**Full Depth Section**  
 1 1/2" HMA Surface  
 Full depth mill in place

**Note:**  
 Place 1' aggregate shoulder



# 2023 City of Goshen Paving Package

## Indiana Ave. from Wilden Ave. to City Limits



### Legend

- Full-Depth Reclamation
- Full-Depth Replacement
- Mill and Pave
- Mill and Pave w/ Full-Depth Patching
- Overlay
- Overlay w/ Full-Depth Patching

Street	From	To	Area	Activity
Indiana Ave.	Bridge	N. City Limits	3,323 sqYd	Full-Depth Replacement
Indiana Ave.	Wilden Ave.	Bridge	1,032 sqYd	Full-Depth Replacement

#### Full Depth Section

- 1 1/2" HMA Surface
- 2" HMA Binder
- 4" HMA Base
- 6" No. 53 Recycled Concrete

#### Note:

- Cut down shoulders to allow roadway runoff into side swales
- Place 1' aggregate shoulder

