

## GOSHEN COMMON COUNCIL

**Minutes of the Feb. 13, 2023 Joint Meeting with the Goshen Community Schools Board  
Convened in the Council Chambers, Police & Court Building, 111 East Jefferson Street, Goshen, Indiana**

Assisted by Mayor Jeremy Stutsman, Kid Mayor Paul Conner Gwaltney called the meeting to order at 6:00 p.m. and led the Pledge of Allegiance.

**Present:**

**Council members:**

Megan Eichorn (District 4)      Julia King (At-Large)      Doug Nisley (District 2)  
Gilberto Pérez Jr. (District 5)      Donald Riegsecker (District 1)      Matt Schrock (District 3)  
Council President Brett Weddell (At-Large)      Kid Mayor Paul Conner Gwaltney  
Youth Adviser Karen C. Velazquez Valdes (Non-voting).

**Present:**

**GCS School Board members:**

Jose Elizalde (District 3)      Mario Garber (At-Large)      Ryan Glick (District 1)  
Allan Kauffman (District 4)      Board President Roger Nafziger (At-Large)  
Bradd Weddell (At-Large)      Youth Ambassador Lauren Grant

**Absent:** Maria Sanchez Schirch (District 2)

**City of Goshen employees present included:**

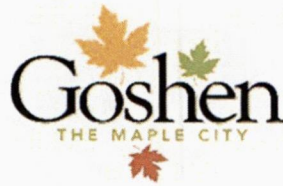
Deputy Mayor Mark Brinson; Civil Traffic Engineer Josh Corwin; Superintendent of Parks & Recreation Tanya Heyde; Director of Environmental Resilience Aaron Sawatsky Kingsley; Chief of Police José Miller; Director of Public Works & Utilities Director Dustin Sailor; City Attorney Bodie Stegelmann; and Assistant Chief of Police Shawn C. Turner

**Goshen Community Schools employees present included:**

Superintendent Dr. Steve Hope  
Assistant Superintendent of Curriculum, Instruction & Assessment Tracey Noe;  
Goshen High School Principal Cathy DeMeyer; Goshen Junior High School Principal Jan Baker;  
Director of Facilities Don Ritter; Associate Superintendent Dr. Alan Metcalfe; Chief Financial Officer Dr. Bob Evans;  
Assistant Superintendent of Human Resources & Professional Development Dr. Lori Line; Director of Communication & Public Relations Lori Martin; Executive Assistant to the Superintendent Teri McCrindle

**Approval of Meeting Agenda:** Kid Mayor Gwaltney presented the meeting agenda for approval. In response to a question from Councilor Nisley, Mayor Stutsman explained the time change in the public comment period (two minutes instead of the normal three minutes per speaker), noting this was permissible because tonight was a special meeting and not a regular Council meeting. Councilor Nisley moved to approve the agenda as submitted. Councilor King seconded the motion. The motion passed 7-0 on a voice vote.





**Privilege of the Floor:**

**At 6:03 p.m., Mayor Stutsman invited public comments on matters not on the agenda. (2 minutes maximum per speaker; 30 minutes overall)**

**AJ Delgadillo of Goshen** thanked Council and Board members for stepping up to be leaders of the community. He said “we are living in a strange time where people speak of danger where there is no risk. They talk about this danger to stoke fear, to stoke animosity.” He urged the officials “to all continue to lead disregarding impulses of fears, assumptions of the world, no matter how common or intuitive, and to lead out of your highest selves – to lead based on evidence, based on what can be known and can be verified and in the absence of evidence, to lead based on compassion for those in our community who are vulnerable and with love for all of our neighbors.” He concluded with what he said was one of his favorite quotes (from Dr. Cornel West, Professor of Philosophy at Union Theological Seminary and Professor Emeritus at Princeton University): “Justice is what love looks like in public.”

**There were no further comments, so the Mayor closed Privilege of the Floor at 6:04 p.m.**

**1) City presentation: Goshen Parks & Recreation (Superintendent Tanya Heyde)**

**Kid Mayor Gwaltney invited the first presentation.**

**Using a PowerPoint presentation (EXHIBIT #1), Superintendent Heyde gave updates on joint Parks and Schools programs; the Neighborhood Park at the Riverdale site; Shanklin Public Pool Master Planning and the Park Department’s 5-year Master Planning. In her presentation, Heyde:**

- Expressed appreciation for the **collaborative programs with Goshen Community Schools**, which include the use of school gyms for pickleball and youth and adult sports and the use of City fields and parks for school activities, including cross country meets.
- Discussed the **coming transfer of the Riverdale property**, adjacent to Chicago Avenue, from the school district to the City for development of a new neighborhood park, adding that specific uses (such as pickleball courts and a dog park) were still being considered.
- Provided an **update on master planning to renovate the Shanklin Pool**. She said an engineering consultant is evaluating the current condition of the pool and the cost of needed upgrades.
- Also said the Parks and Recreation Department is in the process of **developing a new five-year master plan** and will be seeking community input, including from those connected to local schools.

**2) City presentation: Goshen Environmental Resilience (Director Aaron Sawatsky Kingsley)**

**Kid Mayor Gwaltney invited the presentation from the Environmental Resilience Department.**

**Using a PowerPoint presentation (EXHIBIT #2) and a written summary included in the meeting packet, Director of Environmental Resilience Sawatsky Kingsley gave a report on some of the work which the Department of Environmental Resilience completed in 2022 and projects in place for 2023. In his presentation, Sawatsky Kingsley:**

- Thanked Goshen Community Schools for its **collaboration** with the Environmental Resilience Department.
- Discussed the City’s **new drop-off recycling facility**, on North Indiana Avenue, which will be open by April and will be the City’s sole drop-off recycling site. He said it will serve as a supplement to the City’s curbside recycling program, which was launched in August.





- Provided highlights of City statistics since residents were provided trash and recycling containers in hopes of reducing the amount of trash and increase recycling (**EXHIBIT #3**). The document, which was distributed to Councilors and Board members, showed that from August 2022 to January 2023, the City has reduced its trash tonnage, thus reducing costs. Recycling also has increased.
- A planted pocket-prairie at the Rieth Center was **control-burned** for the first time in the spring of 2022. This represents a more sustainable way to manage some landscapes. Controlled burns are planned for a portion of the Abshire Park prairie and again at the Rieth Center in 2023. The Rieth Center prairie burn will include a workshop open to the public.
- The City's annual **Arbor Day Celebration will take place May 5** at the County Courthouse, and will be in collaboration with First Fridays. The event will highlight the important economic, social and ecological benefits which trees provide, and will showcase sustainability practices important to residents.
- The Department is launching a **research project in partnership with Goshen College and high schools**. Two Goshen College interns are helping to create a long-term research project to measure growth in the Beachy Family Classified Forest. The project will be geared for high school students to collect growth and species data year by year, as a way to measure the effects of climate change.
- Two **AmeriCorps service members** (Shae Dirks and Acadia Imhoff) are working in the Department this year. Their work is focused primarily on building greater awareness about biking options in Goshen (a bike valet service at the Arbor Day event, and a women's bike ride and history tour in May), and enhancing the Public Orchard at Abshire Park, including a greater support network.
- The Goshen Shade Tree Board will again make **tree seedlings available to all Goshen High School and Bethany Christian High School graduates this year**. The trees will be made available to Goshen High grads on May 1; they will have an opportunity to select a preferred tree species. These trees are part of the **ongoing campaign to increase Goshen's tree canopy to 45% by 2045**.

**Councilor Riegsecker** asked about the City's current tree cover percentage. Sawatsky-Kingsley said it's at about 20%, which is a decline from the City's original 22% measurement in 2012. He said a new and more accurate measurement was taken in 2021, which reflected the annexation of land that was canopy free.

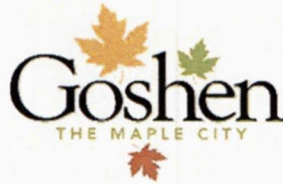
**School Board member Allan Kauffman** said **Sawatsky-Kingsley** has a big job and asked how the tree canopy was measured. **Sawatsky-Kingsley** said it is measured by airplane. He said photo technology that is sensitive to color can recognize the different kinds of land cover and distinguish between trees, lawns and buildings. He said various federal and state agencies collaborate to fund the surveys and create the maps.

**Kauffman** thanked **Sawatsky-Kingsley** for his work.

**Councilor Schrock** asked if the City's existing recycling facility – at Martin's Supermarket – will remain open until the Indiana Avenue facility is ready. **Sawatsky-Kingsley** said it will remain open until the new facility is opened. In response to a question from **Board member Allan Kauffman**, Sawatsky-Kingsley said the new facility will be monitored with cameras to try to discourage illegal dumping of non-recyclable items. **Mayor Stutsman** said the City will be closely monitoring the new site. He said the County was closing its recycling sites because of persistent illegal dumping. He added that if illegal dumping becomes a continuing problem, the City will close the new facility.

**Councilor Schrock** asked if **Sawatsky-Kingsley** wanted to discuss the City's flood resilience efforts.





**Sawatsky-Kingsley** said that in the wake of the City's approval last year of a flood resilience plan, the City will have an annual flood awareness event. This year he said it will be held March 16. Sawatsky-Kingsley said its goal is to better inform the public about the City's chronic flooding problem, which is likely to increase in the coming decades because of climate change, and to discuss what can be done to adapt to that reality and minimize the problem. He said the event will be held at the Schrock Pavilion at Shanklin Park, starting at 4:30 p.m. on March 16.

**3) City presentation: Goshen Engineering Department (Director of Public Works & Utilities Dustin Sailor & Civil Traffic Engineer Josh Corwin)**

Kid Mayor Gwaltney invited the presentation from the Engineering Department.

Using a PowerPoint presentation (EXHIBIT #4), Civil Traffic Engineer Corwin and then Director of Public Works & Utilities Sailor and gave a report on highlights of significant public works projects that will be undertaken in 2023 and in the near future and their impact on schools. Key points:

**Elkhart County Courts** – The County Courts are being consolidated in a new 170,000 square foot facility in Goshen at County Road 17 and U.S. Highway 33. It will have 200-plus employees initially, but could be expanded to accommodate 100 more employees, which will increase traffic in the area. In a joint City-County project, Reliance Road will be rebuilt from Highway 33 to Peddlers Village Road, and Peddlers Village Road from Reliance Road to County Road 17. The schedule for bid release is March 2023, with construction beginning during the summer and extending through the spring of 2024.

**Wilden Avenue** –The reconstruction of the intersection of State Road 15 and the eastern portion of Wilden Avenue, east of State Road 15, was completed in 2022. Starting in March 2023, the western portion of the project between Rock Run Creek and State Road 15 will be initiated and completed during this construction season. The roadway will be shut down for phased reconstruction from west to east. This project includes the reconstruction of the water, sanitary sewer, and storm sewer lines, along with new curb, sidewalk, and roadway pavement. This construction corridor is a primary bus route that will be impacted and needs to be adjusted during the spring and fall semesters

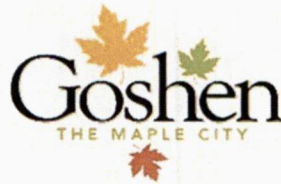
**Indiana Avenue reconstruction** – The City is developing plans to reconstruct Indiana Avenue between Pike Street and Chicago Avenue. Utility coordination is occurring now for needed utility relocations this summer. Reconstruction of this corridor is anticipated in 2024 and will include storm and water replacement and a multi-use path on the west side. Funding for the project is being sought from the state.

**2023 Pavement Maintenance** –The City has a 2023 pavement plan that will begin in late spring and continue into the summer. A work schedule has not been received from the contractor, but once received, it will be posted on the Goshen Engineering Department web page. This year, over \$2 million will be invested in road pavement in the City. The City also plans to install about 100 sidewalk ramps and 2,200 linear feet of sidewalk replacement.

**East Lincoln & Steury Avenue (Redevelopment Department project)** – This project involves the total reconstruction of East Lincoln Avenue between Rock Run Creek and the radio station 98.1. The scope of work also includes the reconstruction of Steury Avenue between East Lincoln Avenue and the north end of the S-curves. The project will go to bid in the spring of 2023, with material assembly anticipated in 2023 and construction planned for 2024. The road improvements will be completed in phases, with full road closures occurring with each phase.

**Tenth Street Reconstruction (Redevelopment & Utilities project)** – In conjunction with the reuse of the former Western Rubber property in the northwest corner of Plymouth Avenue and Tenth Street, the City will be reconstructing the Tenth Street right-of-way between Jackson Street and Reynolds Street. The water main will be replaced south of Plymouth Avenue, and infrastructure will be replaced north of Plymouth Avenue.





Reconstruction will include a new road cross-section with curb and pavement. The design is scheduled for completion in March 2023, with bids due in May. Construction will impact traffic routes to the school in the fall 2023.

**New Wellfield Site (Redevelopment & Utilities project)** – The City operates two wellfields with a combined capacity of 10 million gallons per day. Both wellfields sit on small parcels of land that do not allow for expansion of service. In planning for the City's future, the City and Goshen Redevelopment recently closed on 79 acres of land south off of County Road 27 by the airport. The City Water Utility is vetting the property and the underlying aquifer for use as a public wellfield. The project outcome is for this property to serve the City as a wellfield for over 100 years.

#### 4) City presentation: Goshen Police Department (Assistant Chief Shawn Turner)

Kid Mayor Gwaltney asked for the report from the Police Department.

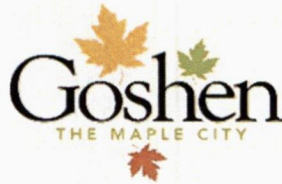
Using a PowerPoint presentation (EXHIBIT #5), Assistant Police Chief Turner reported on the partnership of the Goshen Police Department and Goshen Community Schools. He began by joking about the professionalism of the Police Department vs. the Fire Department. Chief Turner:

- Expressed his **appreciation to schools** and the growing relationship and communication between the Police Department and school officials.
- He said **Jade Murphy** is the department's newest School Resource Officer (SRO) and is assigned to the Goshen elementary schools. Murphy, who has a criminal justice degree from Indiana University South Bend, was hired in 2019, often volunteers for community events and is a neighborhood liaison.
- **Tara Powell**, who has spent the last seven years as an SRO and has mentored several prior SROs, will be assisting Murphy with the transition from patrol officer to SRO. Powell is well liked in the schools.
- **Tommy Steele**, who is well known at the middle school, has been serving as an SRO for the last 13 years. Steele is also the vice president of the Indiana School Resource Officers Association (INSROA).
- **Jeff Eaton** has served for approximately about a year at the high school as an SRO. He was recruited from retirement after serving 24 years with the Elkhart Police Department. During his time in Elkhart, Eaton served as an administrator, a homicide detective, and was in a specialized multi-jurisdictional task force.
- Assistant Chief Turner described the important **responsibilities of the School Resource Officers**, which go beyond their "security" role and include mentoring and spending time with at-risk students.
- He discussed **School Safety initiatives** since the "Covid-19 years" and said the school guard program works. He said it is an effective tool.
- **Jim (James) Ballard** is the department's Behavioral Health Response Coordinator. This was a position created by the Mayor to provide more resources to community members who are dealing with some level of mental crisis/trauma. Ballard is Critical Incident Training (CIT) certified, and is a CIT Coordinator certified by the National Alliance of Mental Health. Ballard has made a name for himself in Elkhart County for developing and utilizing resources, and for his compassionate handling of vulnerable community members
- Turner ended by displaying a photo of Mayor Stutsman during training with firefighters, adding, "Not only little girls have dreams of becoming firefighters, but little boys sometimes have dreams of becoming firefighters, even as adults. Sometimes their dreams don't come true and they just have to pretend."

**Council Youth Adviser Karen C. Velazquez Valdes** asked how School Resource Officers are evaluated. **Assistant Chief Turner** said a yearly evaluation is conducted and includes input from school staff. He said he receives great feedback about Officers Powell and Steele. He said officers are also evaluated based on numerous categories.

**Youth Ambassador Lauren Grant** also commented positively about the SROs





**5) Schools presentation: Stop It! app (Principal Jan Baker, Goshen Junior High School)**

Kid Mayor Gwaltney invited a presentation about the Stop It! app.

Principal and District School Safety Coordinator Baker summarized her written report, which was included in the meeting packet. Key points:

- Goshen Community Schools (GCS) is constantly looking for **new and better ways to improve the safety and security** for students and staff, and the **Stop It! app** is part of those efforts.
- At the request of high school students, GCS will be launching the **anonymous reporting Stop It! app on student devices** Tuesday, Feb. 21 for grades 5-12.
- Stop It! **allows individuals to anonymously report safety, misconduct, or compliance concerns** to school officials and School Resource Officers via the app, website, or phone call.
- She showed a **video created a video to promote the app** and the "See Something, Say Something, Do Something" preventative concept for the school community. It can be viewed at: <https://www.youtube.com/watch?v=QJpXBBWon80>
- A student-focused video will be shown in the schools this week and the **app will be launched later in the week**. Elementary schools will be added later.

**Councilor Pérez** asked the number of staff members who will receive incident reports generated by students using the app. Baker said it will be the principals, assistant principals and School Resource Officers as needed. She said counselors will be informed as needed.

In response to a follow-up question from **Councilor Pérez**, **Baker** said that she expects a surge of initial reports, but expects the pace will slow down later. Still, Baker said she would much prefer to focus on preventative measures than respond after the fact because of a problem.

**6) Schools presentation: Demographic Report (Dr. Jerome McKibben, Senior Demographer, McKibben Demographic Research, LLC.)**

Kid Mayor Gwaltney introduced the demographic report.

Using a PowerPoint presentation (EXHIBIT #6), Dr. Jerome McKibben gave a report on the demographics of Goshen Community Schools and the City of Goshen.

**Dr. McKibben** began by stating that he would be providing a report on the joint population and enrollment forecast for the next 10 years. He cautioned that it was a forecast and not a projection. He said a forecast is more accurate.

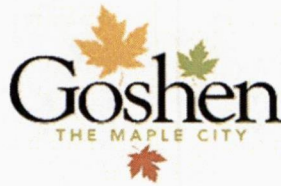
**McKibben** said that although he lives in South Carolina, he was born and raised in Indiana and is familiar with Mishawaka and Goshen. He said he served as the state demographer for about six years and has studied about 125 Indiana school districts.

**Regarding the school enrollment forecast**, **McKibben** said a lack of housing will be the biggest factor reducing enrollment in the coming decade. He also said the district can expect to have a negative 500 student transfers per year over the next decade. He said Indiana is the only state allowing open enrollment, vouchers and charter schools at the same time, which is reducing public school enrollment.

**Key points regarding the enrollment forecast for Goshen Community Schools:**

1. The resident total fertility rate for the Goshen Community Schools over the life of the forecasts is below replacement level (1.98 versus the replacement level of 2.1).





2. Most in-migration to the district continues to occur in the 0-to-4 and 20-29-year-old age groups.
3. The local 18-to-24-year-old population continues to leave the district, going to college or moving to other urbanized areas. This population group accounts for the largest segment of the district's out migration flow and will increase steadily over the next 10 years. The second largest migration outflow is 30- to 44-year-old residents moving to suburban areas. The third largest migration outflow is in the 70+ age groups.
4. The primary factors causing the district's enrollment to decrease over the next eight years is the increase in empty nest households, the relatively low number of elderly housing units turning over coupled with a flat rate of in-migration of young families.
5. Changes in year-to-year enrollment over the next six years will primarily be due to small cohorts entering and moving through the school system in conjunction with larger cohorts leaving the system.
6. The elementary enrollment will slowly increase over the next 10 years school years.
7. The median age of the district's population will increase from 34.2 in 2020 to 35.2 in 2030.
8. Even if the district continues to have some amount of annual new housing unit construction over the next 10 years, the rate, magnitude, and price of existing home sales will become the increasingly dominant factor affecting the amount of population and enrollment change.
9. Total district enrollment is forecasted to decrease by 289 students, or -4.7%, between 2022-23 and 2027-28. Total enrollment will increase by 16 students, or 0.3%, from 2027-28 to 2032-33.

**McKibben** said Goshen's greatest out-migration is among those 18 to 22 years old. He said an increasing number of youths graduate from high school, leave the community and don't return. He said only about 15% are staying.

**Regarding the City population forecast, McKibben** said City will experience the same trends as for school enrollment. He also said most of Goshen's housing market is inside the City's boundaries with little additional home growth. As a result, population growth will be less in the next 10 years than in recent decades.

**Key points regarding the population forecast for the City of Goshen:**

1. The resident total fertility rate for the City of Goshen over the life of the forecasts is below replacement level. (2.08 vs. the replacement level of 2.1)
2. Most in-migration to the City occurs in the 0-to-4 and 20-29-year-old age groups.
3. The local 18-to-24-year-old population continues to leave the City, going to college or moving to other urbanized areas. This population group accounts for the largest segment of the city's out migration flow and will increase steadily over the next 10 years. The second largest migration outflow is 30- to 44-year-old residents moving to suburban areas. The third largest migration outflow is in the 70+ age groups.
4. The number of households in the City increased from 11,735 in 2010 to 12,720 in 2020.
5. The average household size of the City decreased from 2.68 persons per household in 2010 to 2.62 in 2020. Had the average household size stayed at the 2010 level, the City would have had 763 additional residents in 2020.
6. Total city population is forecasted to increase by 289 people, or 2.0%, between 2020 and 2025. The total population will increase by 510 people, or 1.4%, from 2025 to 2030.
7. The City population is forecasted to increase by 3.5% from 2020 to 2030. This compares to the growth rate of 4.9% for the period 2010 to 2020.
8. The median age of the City's population will increase from 34.8 in 2020 to 37.5 in 2030.





9. Even if the city continues to have some amount of annual new housing unit construction over the next 10 years, the rate, magnitude, and price of existing home sales will become the increasingly dominant factor affecting the amount of population and enrollment change.

10. The 65 and older age group will be the fastest growing age cohort in the city over the next 10 years

**McKibben** said as in other cities, Goshen is likely to experience a housing shortage for seniors. Instead of moving as may be assumed to warmer states, he said more elderly people will stay in Goshen, increasing the need for senior services, including transportation.

**Mayor Stutsman** thanked **McKibben** for his report and to Goshen community Schools **Superintendent Dr. Steve Hope** for commissioning **McKibben's** forecast, which was co-sponsored by the City.

**Clerk-Treasurer Richard R. Aguirre** asked **McKibben** if his population forecast assumptions would change if he knew the City of Goshen planned to add about 2,000 housing units in the next two years. **McKibben** said his forecast would not change "because you're not going to add 2,000 housing units in the next two years."

In response to a follow-up question from **McKibben**, **Mayor Stutsman** said the City would be adding apartments and single-family homes. **McKibben** responded that he was skeptical that would happen, adding, "You'll be the only city in the United States to pull that off, under 50,000 population."

Asked by **McKibben** if the 2,000 units were "platted, planned and approved," **Mayor Stutsman** said the 2,000 housing units were in process and the only obstacle would be how fast they could be built. **McKibben** said, "I'm skeptical of that. The apartments maybe because there's a shortage of that."

**McKibben** later said, "Good luck with that" and asked to be informed if that occurred. He cited supply chain issues and other factors, including high interest rates, but said building that many homes would be a big accomplishment. He ended by saying that such a large increase in homes would change his enrollment and population forecasts.

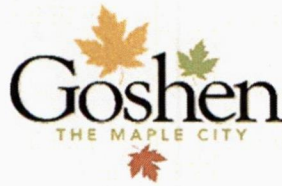
#### 7) Schools presentation: GCS Graduation Report (Principal Cathy DeMeyer, Goshen High School)

**Kid Mayor Gwaltney** asked for the Goshen Community Schools graduation report.

Using a PowerPoint presentation (EXHIBIT #6), **Principal DeMeyer** gave a report on the Goshen Community Schools graduation rate, including the current GCS graduation rate; the recent history of the graduation rate; and plans for graduation improvement. Key points:

- She thanked **Goshen Police** for its partnership.
- **The GHS graduation rate** has increased from 82% in 2018, 93% in 2019; 91% in 2020; 87% in 2021 and 92% in 2022. Except for 2018, those rates have exceeded the state average.
- **The graduation rates of local high schools in 2022** were 89% at Concord, 94% at Fairfield, 92% at Northfield, 92% at Goshen and 92% at Northridge.
- **Why increase the graduation rate:** "Compared to a high school dropout, a high school graduate yields a public benefit of over \$200,000 more in lower government spending and increased tax revenue. If the number of dropouts were cut in half, the government would realize a \$45 billion savings and revenue." (H. Levin, from *The Costs and Benefits of an Excellent Education for All of America's Children* (New York, NY: Center for Cost-Benefit Studies of Education Teachers College, Columbia University, 2007).
- **Why increase the graduation rate:** If the male graduation rate was increased by just 5%, we would likely see a savings of \$4.9 billion in crime-related costs. (*Alliance for Excellent Education, "Saving Futures, Saving Dollars: The Impact of Education on Crime Reduction and Earnings," Washington, DC: 2006*)





- **Cutting the dropout rate in half for just one year would likely support as many as 54,000 new jobs and increase the gross domestic product by as much as \$9.6 billion.** (*Alliance for Excellent Education, "Education and the Economy: Boosting the Nation's Economy by Improving High School Graduation Rates," Washington, DC: Author, 2011*). She noted that Goshen has many available jobs.
- **High school dropouts will earn \$260,000 less than their high school graduate peers over their lifetime.** (*JAG, 2022*)
- **Initiatives to increase the GHS graduation rate:** She outlined programs to increase the graduation rate, including Freshman Teams, Pathway Options, Early College, Dual Credit and Indiana Core Curriculum, Internships, Apprenticeships and Work Experience.

In response to a question from **School Board member José Elizalde, DeMeyer** said it eventually will be possible for high school students to graduate with an associate's degree in two years. He said 22 of 103 teachers are already prepared to teach dual-credit classes.

In response to a question from **Councilor Pérez, DeMeyer** said Goshen doesn't offer Advanced Placement (AP) courses. She also said Goshen is competing with Concord, Elkhart and Northridge, which also offer or will offer dual-credit courses, but Goshen is committed to keeping as many students as possible.

#### **8) Schools presentation: Model Drive/Traffic Report (Facilities Director Don Ritter)**

**Kid Mayor Gwaltney asked for the Model Drive/Traffic report.**

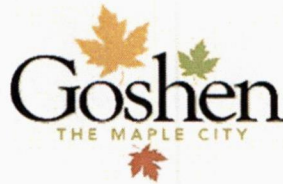
**Facilities Director Ritter gave a report using a PowerPoint presentation (EXHIBIT #7).**

**Ritter** said one of Goshen Community Schools' summer projects will be the Model Elementary School Driveway. This project is slated to begin at the end of May with substantial completion by the end of July.

He said the goal of this project is to solve traffic issues Model has at the beginning and end of each school day. The improvements are expected to provide safer conditions for Model students along with reducing congested City intersections. **Key points:**

- **Current issues:** Berkey Avenue and Greene Road congestion; safety concerns students and traffic; Model staff arrival is difficult due to traffic; and improve relationships between the school and the public.
- **Improved traffic and less congestion:** The Model Student count is currently 492; bus riders account for only 223 students; there are approximately 80-100 cars that stage for student pick up; some students walk; there are about 70 employees, including office, teachers, paraprofessional, kitchen, and custodial staff.
- **Improved student safety goals:** Separate the bus traffic and staff parking from parent drop off; promote timely staff arrival, allow staff to be available for student arrival; relieve congestion at the intersection of Greene and Berkey, reduce the risk of accidents and backup; and students will be safer at the intersection when they are crossing.
- **New parent driveway:** The new drive will focus traffic on the north side of the school. This should free up the congestion at the Berkey Avenue and Greene Road intersection. The drive will enter off the Pringle Drive on the east side of the solar field and run to the south side of the solar field and return to the west entering the parking lot. This should allow for nearly 100 cars to stage up waiting on student release.
- **Staff parking and bus area:** This will keep the bus traffic separate from parent traffic. Staff will have less trouble pulling into the parking driveway with less traffic at the intersection.





- **Timeline:** Bids were received at the end of January. The substantial completion date will be the end of July; Communication to parents will begin at the end of this school year. And parents will be given more detailed information prior to the start of the new school year.

**Councilor Nisley**, who represents the Council district that includes Model Elementary School, said he receives three to five complaints a month from constituents about traffic at the school. He asked if this project will eliminate the problem. **Ritter** said this should reduce the problem by allowing 80-100 vehicles to park on site while they wait to pick up children. In response to further questions from **Councilor Nisley**, **Ritter** and School Board member **Bradd Weddell** explained the steps that will be taken to address the problem.

**Councilor Nisley** said he has noticed another problem that has developed, this one at Goshen Middle School. He said parents are parking at the gas station on Indiana Avenue and waiting for their children to cross the street from the school. **Ritter** said the school will need to communicate with parents about that issue.

In response to questions from **Councilor Pérez**, **Ritter** clarified efforts that will be made to enhance safety at Model. He also said the school hopes to communicate with parents to address traffic issues now. In response to a question from **Councilor Nisley**, **Ritter** discussed signage that may need to be added to direct traffic.

**Councilor King** said she was glad this issue was being addressed at Model Elementary, but added that this isn't the only school with traffic problems. She said she has heard complaints about traffic at West Goshen, Chamberlain and Parkside elementary schools. She said there needs to be continuing communication between the City and schools.

## 9) Schools presentation: Kindergarten Registration (Assistant Superintendent Tracey Noe)

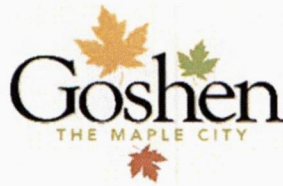
**Kid Mayor Gwaltney** asked for the final report on kindergarten registration.

**Assistant Superintendent Noe** summarized her report, which was included in the meeting packet. **Key points:**

- Goshen Community Schools (GCS) officially opened kindergarten registration starting on Feb. 6, 2023, which she described as the start of "celebration season."
- This year GCS are offering several options for parents to register their kindergarten students, including: scheduled appointments, a QR Code on the district website; three open evening hours of registration; online registration and open door registration (although a scheduled time is preferred during busy enrollment periods).
- Parents should be prepared to bring and/or submit online: the child's birth certificate, state-required immunization records, verification of residency (through a utility bill, cable bill or some form of correspondence) as required by state law, and any legal documents (such as custody paperwork).
- Goshen Community Schools are anticipating a smooth registration process as parents have a variety of options to enroll their students. Staff members are thrilled and eager to watch the City's youngest learners begin their public-school education at Goshen Community Schools.

**Councilor Pérez** asked about the start date. **Assistant Superintendent Noe** said registration began on Feb. 6 and has been very busy. She said many parents are using the QR code.





**10) Council/Goshen Community Schools Board closing conversation:**

Kid Mayor Gwaltney introduced the final agenda item of the meeting. Mayor Stutsman invited conversation on the following questions:

- 1. Are there other issues/matters the City and GCS can/should collaborate on?**
- 2. How can we continue to ensure a good working relationship?**
- 3. Any other discussion topics?**

**Councilor Nisley** offered his congratulations to the Bethany Christian girls basketball team for winning the regional championship over the weekend and he said the team now will play in the semi-state tournament. He noted this was Bethany's first-ever title. **Audience members responded with applause.**

**School Board President Roger Nafziger** said Goshen Community Schools has a great relationship with Bethany. He also said Goshen **Superintendent Steve Hope** and Bethany's **Head of School Tim Lehman** meet frequently.

**Councilor Nisley** said his grandchildren attend Bethany.

**Council Youth Adviser Karen Velazquez Valdes** said she was grateful for what Goshen Community Schools does for the community and for students. Still, she expressed a concern about the development of "rudimentary knowledge abilities" within elementary and secondary schools.

**Velazquez Valdes** said that last year she tutored a student who was a sophomore at Goshen High School and never learned long division. She said: "I know he's not the only one. And I think a lot of issues within students have been neglected." She added that her sister is a special needs student in fourth grade "and at her age she should be able to add, subtract, multiply and divide, but she can only add." Still, she continues to advance in grades.

**Velazquez Valdes** concluded: "I think it manifests in the way my sophomore peer couldn't do long division and I see that happening throughout. So, I would like to express that concern and encourage GCS to investigate more into why that sort of thing happens."

**Goshen Community Schools Youth Ambassador Lauren Grant** agreed with **Velazquez Valdes** and said, "I was a tutor as well and I had a couple students who struggled with addition, which was a little surprising but we worked through that." she said.

**Grant** also said that she has noticed that despite the community's demographics, there is still a low minority turnout at City and school meetings. She said, "I think that's a little bit of a problem considering it's a large amount of students in our school who are Latino or other minorities and they obviously have parents." She encouraged City and school officials to work to increase the minority turnout at public meetings.

**Velazquez Valdes** responded that she and **Councilor Pérez** are developing a radio program aimed at the Spanish-speaking community about Council affairs, although it would also be beneficial to include schools.

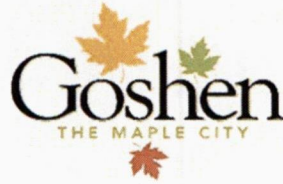
**Mayor Stutsman** said greater community outreach is always a goal and he welcomed new ideas for doing so.

**Councilor King** thanked the youth advisors for speaking up and giving their opinions.

**There were no further comments by Councilors or School Board members.**

**Councilor King** made a motion to adjourn the meeting. **Councilor Nisley** seconded the motion. **Councilors** unanimously approved the motion to adjourn the meeting.





Kid Mayor Gwaltney adjourned the meeting at 8:09 p.m.

**EXHIBIT #1 (5 pages): PowerPoint presentation by Superintendent of Parks & Recreation Tanya Heyde on programs and activities.**

**EXHIBIT #2 (7 pages): PowerPoint presentation by Director of the Department of Environmental Resilience Aaron Sawatsky-Kingsley on programs and activities.**

**EXHIBIT #3 (1 page): Written summary of City statistics since residents were all provided trash and recycling containers in August 2022 in hopes of reducing the amount of trash dumped and increasing recycling. This document was summarized at the meeting by Director Sawatsky-Kingsley and prepared by Theresa Sailor, Grant Writer and Educator for the City Environmental Resilience Department.**

**EXHIBIT #4 (10 pages): PowerPoint presentation by Director of Public Works & Utilities Dustin Sailor and City Civil Traffic Engineer Josh Corwin on significant Engineering Department programs and activities.**

**EXHIBIT #5 (16 pages): PowerPoint presentation by Assistant Police Chief Shawn Turner on police programs and activities affecting Goshen Community Schools.**

**EXHIBIT #6 (21 pages): PowerPoint presentation by Dr. Jerome McKibben, Senior Demographer, McKibben Demographic Research, LLC., on demographics of the Goshen Community Schools and the City of Goshen.**

**EXHIBIT #7 (8 pages): PowerPoint presentation by Goshen High School Principal Cathy DeMeyer on the Goshen Community Schools Graduation Report.**

**EXHIBIT #8 (7 pages): PowerPoint presentation by GCS Facilities Director Don Ritter on the Model Driveway/Traffic project**

APPROVED:

A handwritten signature in black ink, appearing to be "J. Stutsman", written over a horizontal line.

Jeremy P. Stutsman, Mayor of Goshen

ATTEST:

A handwritten signature in black ink, appearing to be "Richard R. Aguirre", written over a horizontal line.

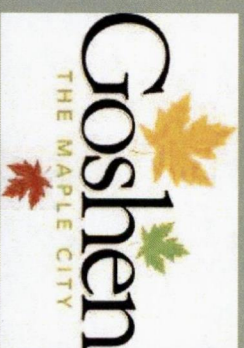
Richard R. Aguirre, City Clerk-Treasurer



# Parks & Recreation



Goshen Common Council &  
Goshen Community Schools  
Joint Meeting





# Cooperative Programs

## ■ Parks and Recreation and Goshen Community Schools cooperative programs

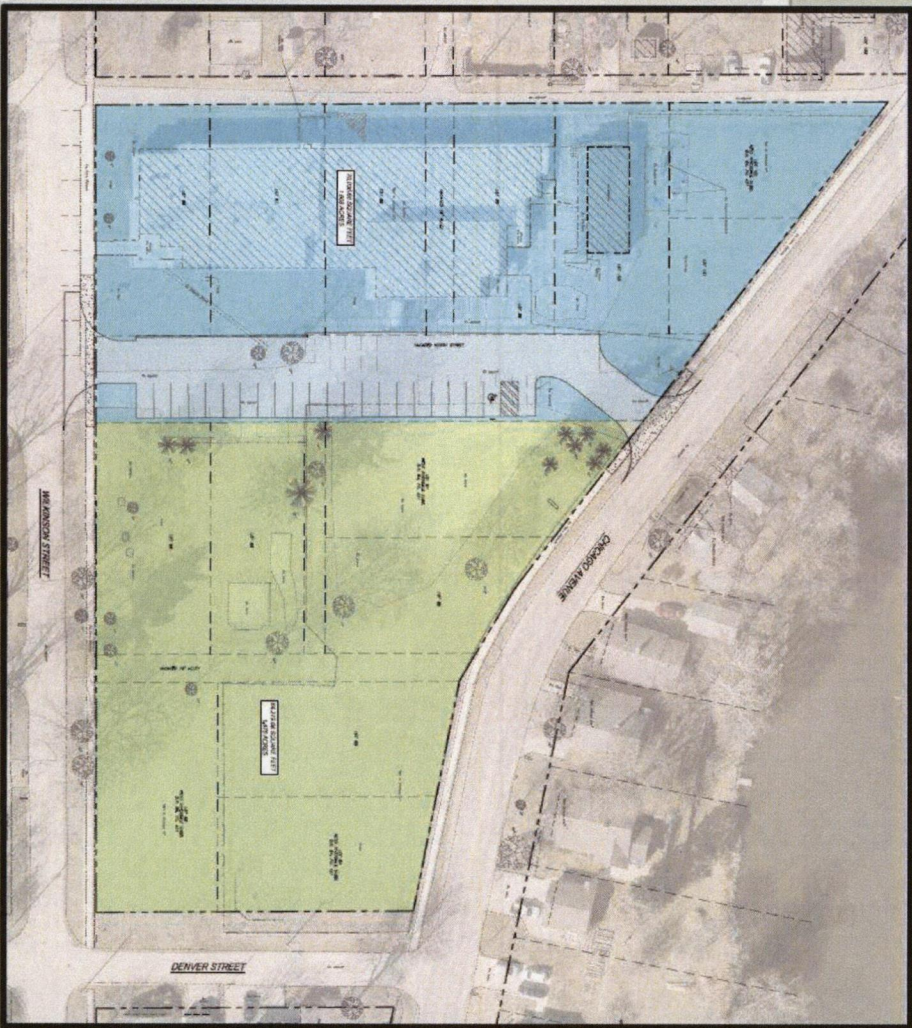
- Pickleball
- Youth Basketball
- Adult Basketball
- Adult Volleyball
- 40 and Over Open Gym Basketball
- Cross Country
- Varsity & Junior Varsity Softball
- Summer Lunch Program





# Riverdale Property

- 1.5 acre park
- Public Meeting
- Phases





# Shanklin Pool

- Master Planning
- Existing Conditions
- Evaluate





# Five Year Master Plan

- Update Plan
- Public Engagement
- Benefits

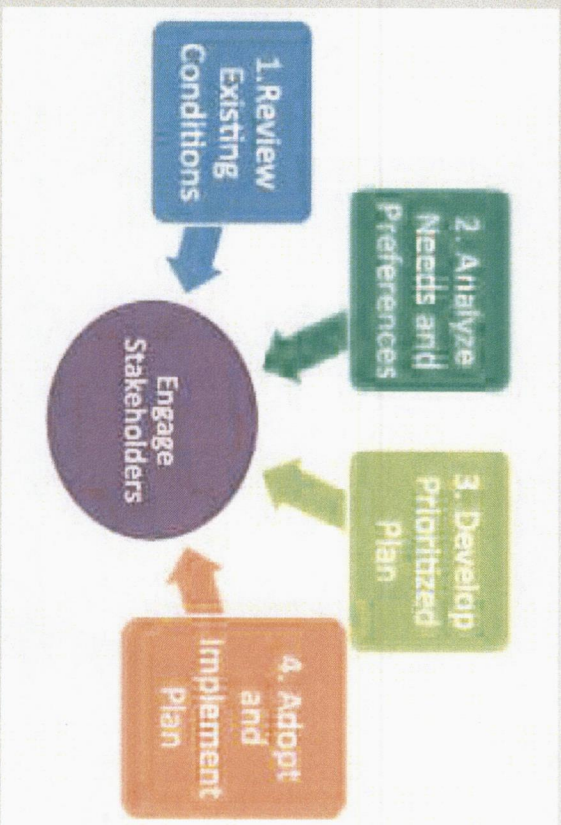




EXHIBIT #

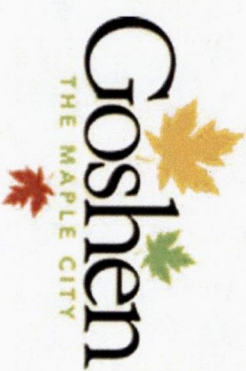
City of Goshen Trash and Recycling Statistics

Year	Month	Recycling				Previous Year Tonnage	Landfilled Trash				Previous Year's Tonnage	Trash Reduction from 2022 Tonnage	Where did the tonnage go?		
		Route No.	Tonnage	Route No.	Tonnage		Route No.	Tonnage	Route No.	Tonnage			Approximate Percentage of Trash Diverted as Recycling	Approximate Percentage of Reduced Waste generated	
2022	Aug	620A	53.14	620B	55.31	0	485.18	320	485.15	321	970.33	1178.06	18%	10%	8%
2022	Sep	620A	77.64	620B	63.36	0	434.54	320	462.58	321	897.12	1106.68	19%	14%	5%
2022	Oct	620A	63.36	620B	66.83	0	385.7	320	423.41	321	809.11	1075.08	25%	14%	11%
2022	Nov	620A	52.11	620B	67.17	0	392.45	320	409.43	321	801.88	1045.49	23%	13%	10%
2022	Dec	620A	53.28	620B	74.41	0	373.82	320	364.32	321	738.14	1073.46	31%	15%	16%
2023	Jan	620A	87.32	620B	69.28	0	388.08	320	419.45	321	807.53	n/a		16%	-16%
2023	Feb	620A		620B		0		320		321	0	n/a		#DIV/0!	#DIV/0!
2023	Mar	620A		620B		0		320		321	0	n/a		#DIV/0!	#DIV/0!
2023	Apr	620A		620B		0		320		321	0	n/a		#DIV/0!	#DIV/0!
2023	May	620A		620B		0		320		321	0	n/a		#DIV/0!	#DIV/0!
2023	Jun	620A		620B		0		320		321	0	n/a		#DIV/0!	#DIV/0!
2023	Jul	620A		620B		0		320		321	0	n/a		#DIV/0!	#DIV/0!





# Department of Environmental Resilience



Presentation to

Joint Goshen School Board and Common Council

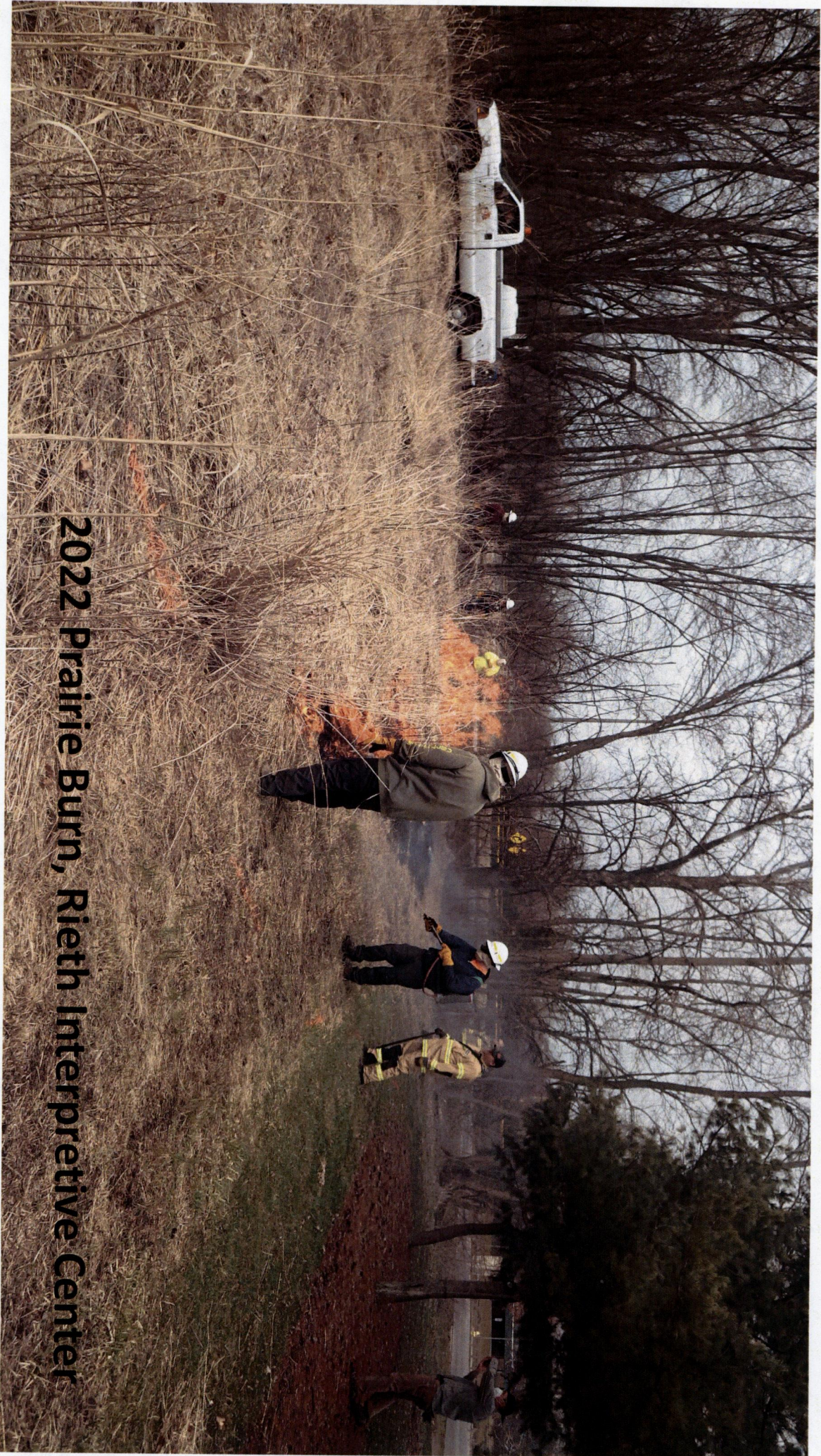
February 13, 2023





**New Drop-off Recycle Facility, North Indiana Avenue**





**2022 Prairie Burn, Rieth Interpretive Center**



# 2022 Arbor Day Celebration, Elkhart County Courthouse







**Beech sapling in the Beachy Classified Forest**





**Pumpkinvine Bike Path, Abshire Park**



**Paw Paw at Public Orchard, Abshire Park**



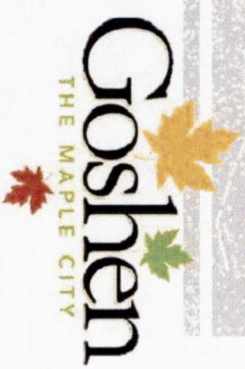
Bur Oak on S. 6<sup>th</sup> St.





# ENGINEERING: SIGNIFICANT PROJECTS FOR 2023

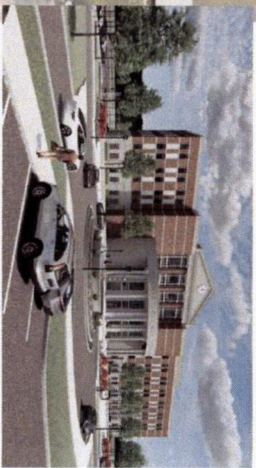
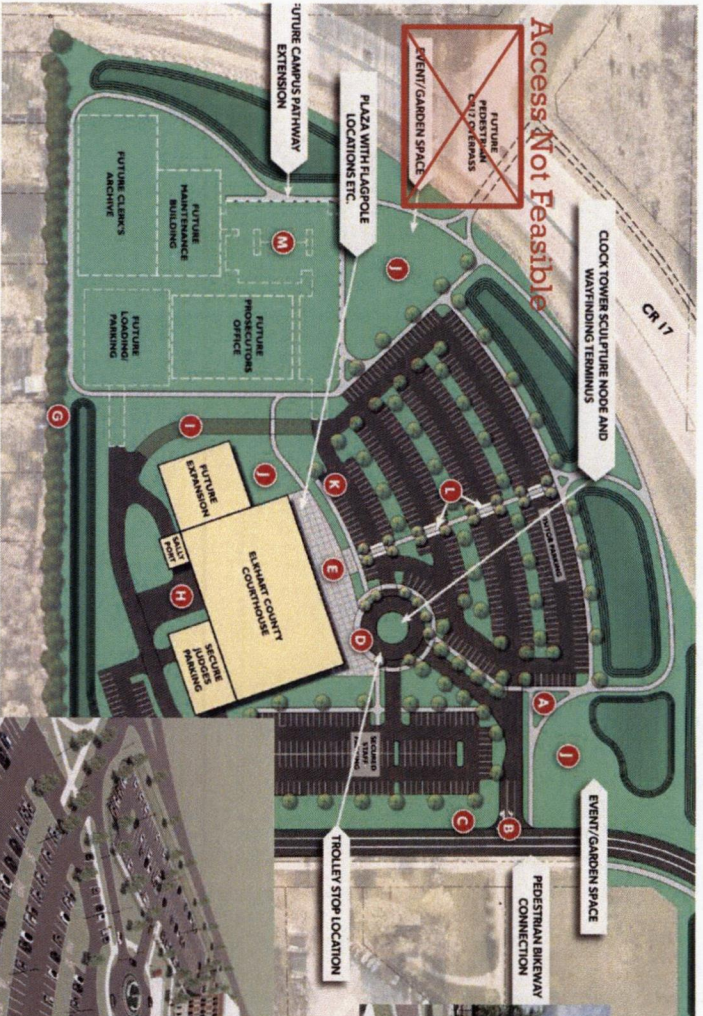
February 13<sup>th</sup>, 2023





**Reliance & Peddlers**

- Wilden Avenue
- Indiana Avenue
- Paving & Sidewalks
- East Lincoln Avenue
- Tenth Street
- Wellfield



- Site Access:**
- Careful evaluation determined access from CR 17/Rieth Intersection to be not feasible
  - Speed limit would have to change, requiring a realignment/regrading of the curve that would also impact the bridge over US 33
- Site Specifics:**
- 170,000 sq. ft. Facility with 200+ employees
  - Future expansion on west side of parcel would bring an additional 100 employees.







• Reliance & Peddlers

• Wilden Avenue

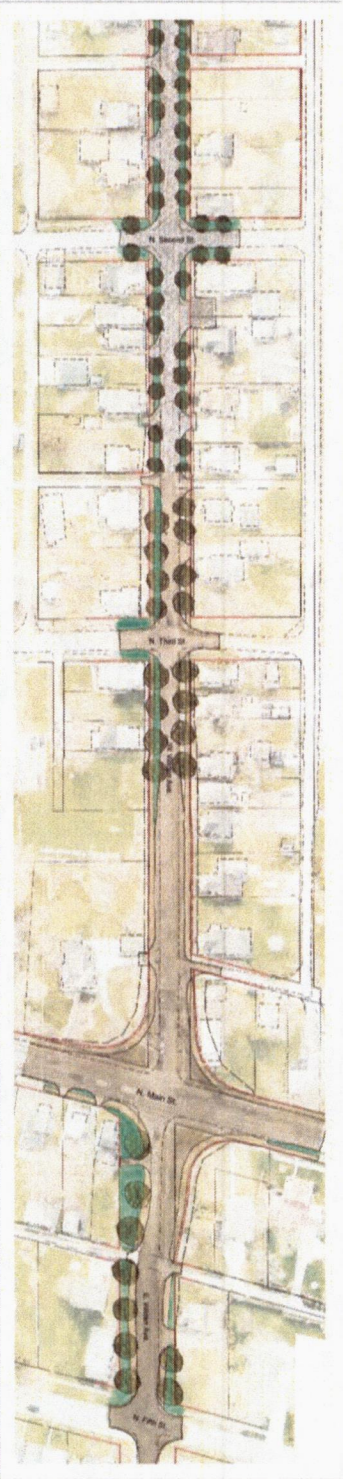
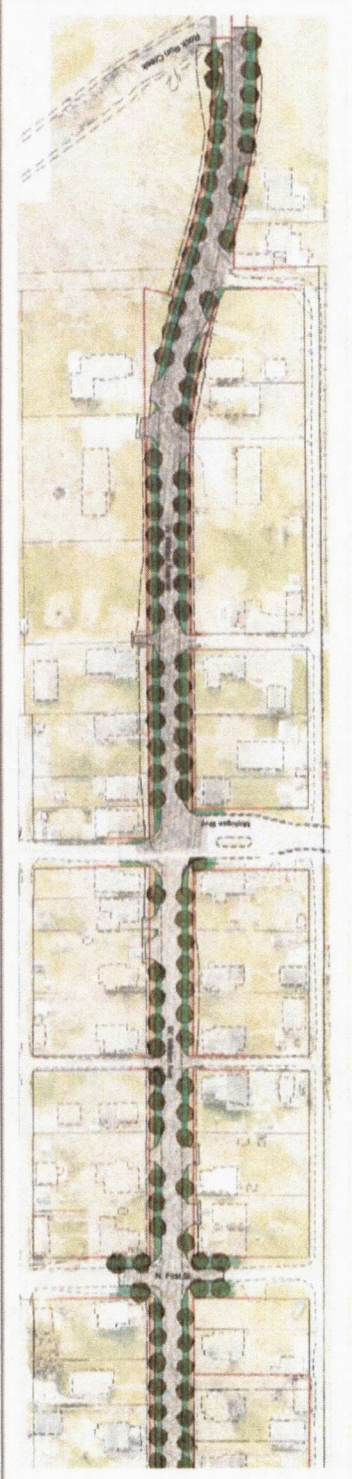
• Indiana Avenue

• Paving & Sidewalks

• East Lincoln Avenue

• Tenth Street

• Wellfield



### Full Reconstruction

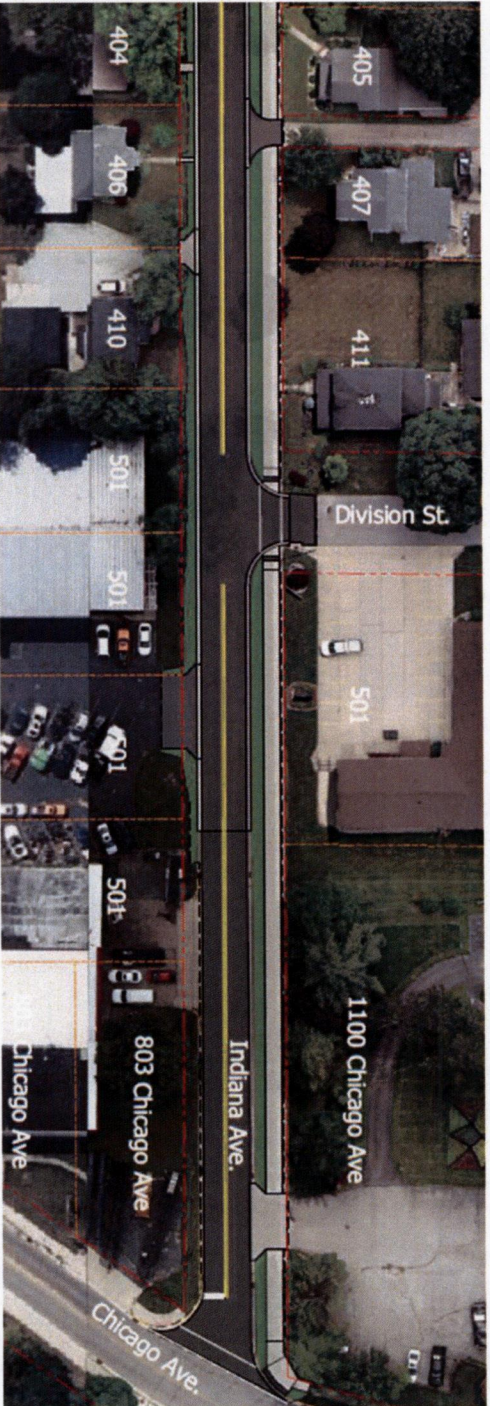
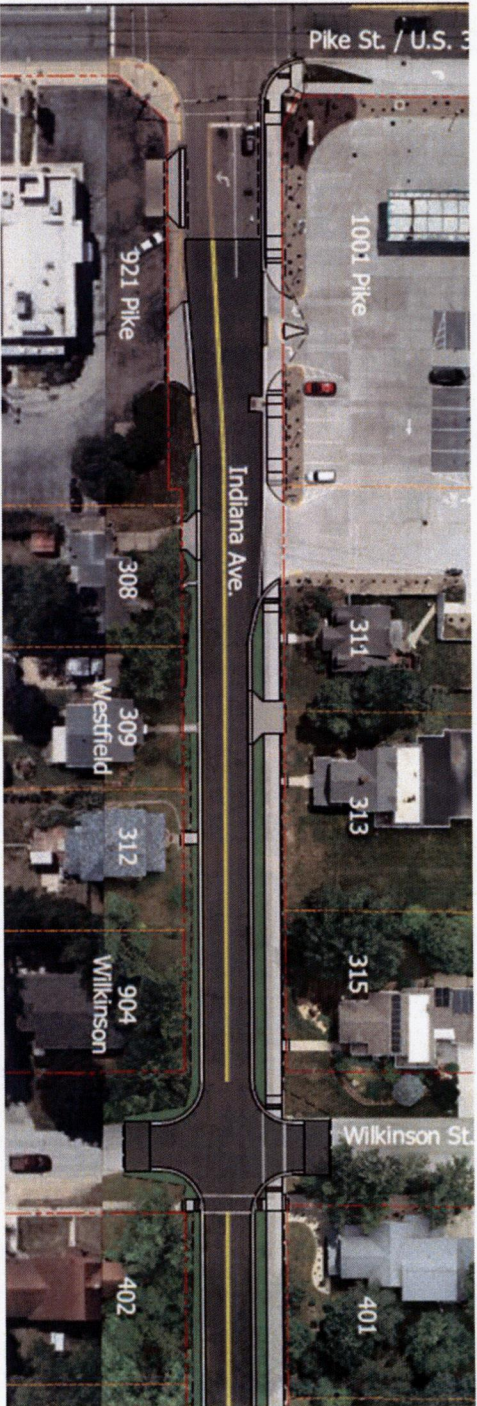
- Rock Run Creek to 5th
- Tree removal and utility relocations complete
- East of SR 15 completed in 2022
- West of SR 15 to be constructed in 2023

### Construction Schedule

- 2023 construction will be completed in two phases and span all of the construction season
- Likely to begin the 2nd week of March
- Will affect some school drop-off/pick-up locations



- Reliance & Peddlers
- Wilden Avenue
- **Indiana Avenue**
- Paving & Sidewalks
- East Lincoln Avenue
- Tenth Street
- Wellfield

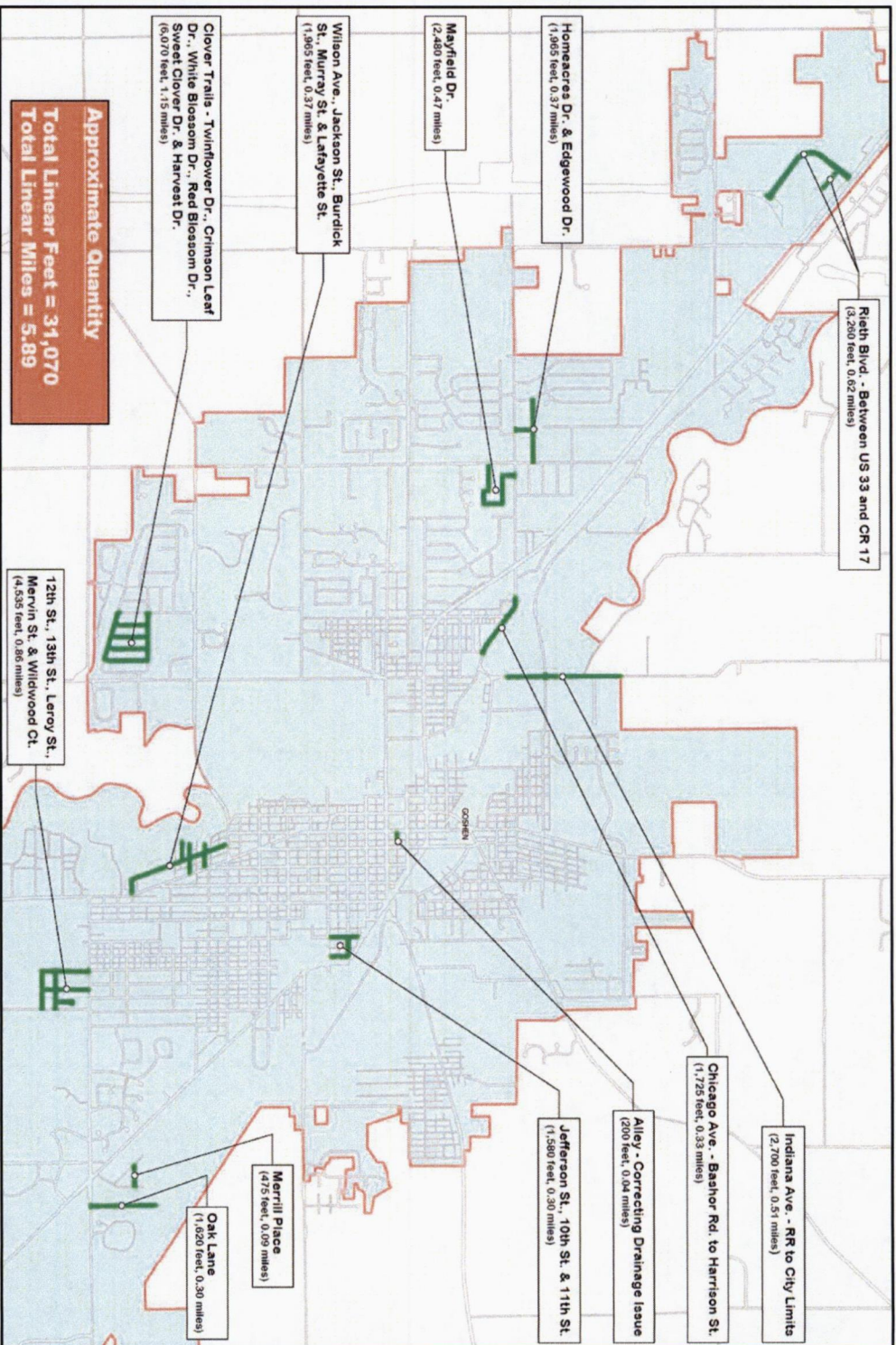


**Full Reconstruction**

- 8'-wide multi-use path on the north side
- Storm sewer improvements
- Sewer and water replacements
- Scheduled for 2024 subject to CCMG grant funding
- Tree removal has started
- Utility relocations will occur in 2023



- Reliance & Peddlers
- Wilden Avenue
- Indiana Avenue
- Paving & Sidewalks
- East Lincoln Avenue
- Tenth Street
- Wellfield

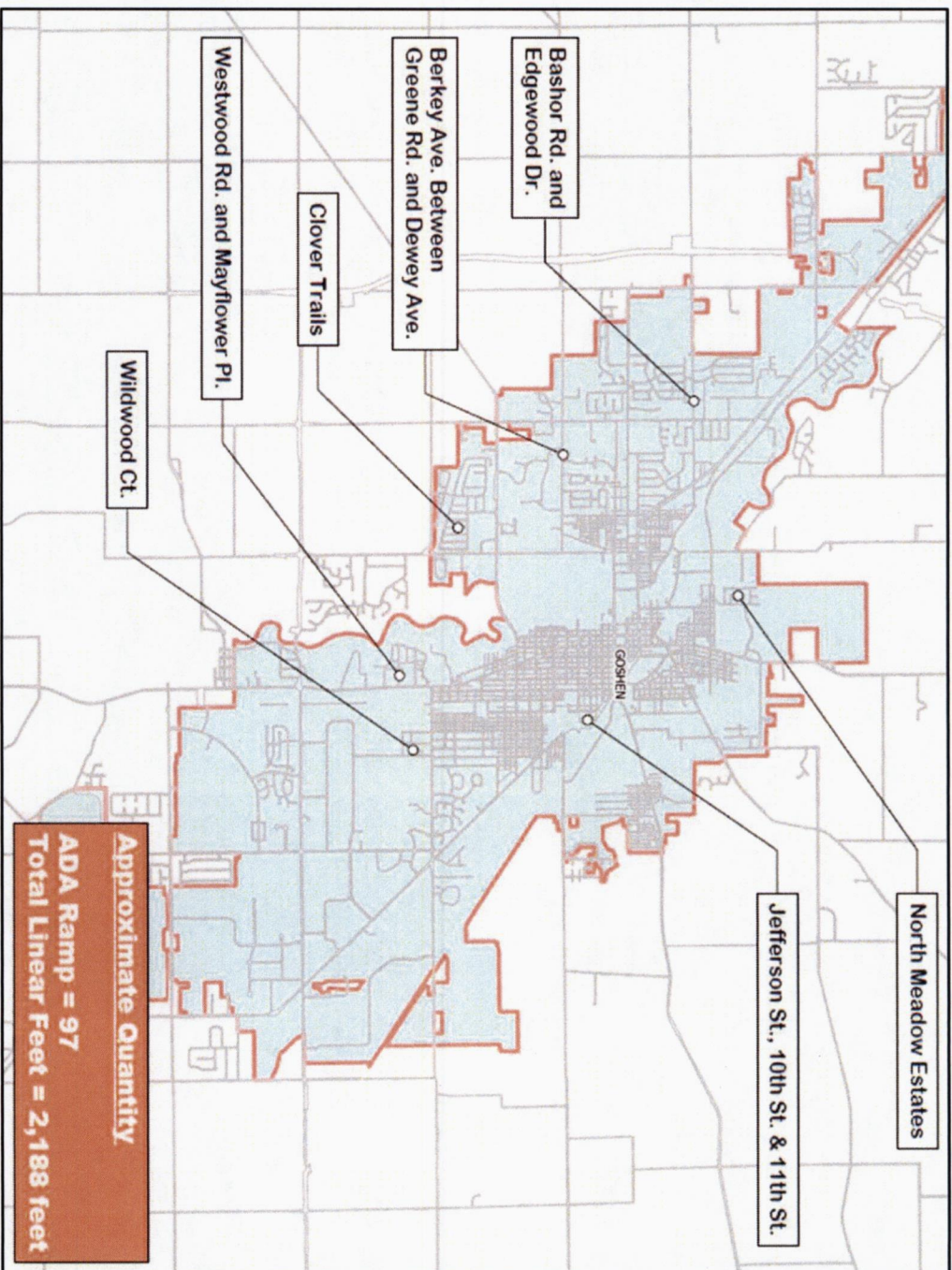


### 2023 Paving Program

- Begin in late Spring
- Work schedule will be posted on the City's webpage once it is received
- \$2M+ investment



- Reliance & Peddlers
- Wilden Avenue
- Indiana Avenue
- Paving & Sidewalks
- East Lincoln Avenue
- Tenth Street
- Wellfield



**2023 Projects**

- Begin in early Spring
- Work schedule will be posted on the City's webpage once it is received
- Around 100 ADA ramps and 2,200 LFT of sidewalk replacement,

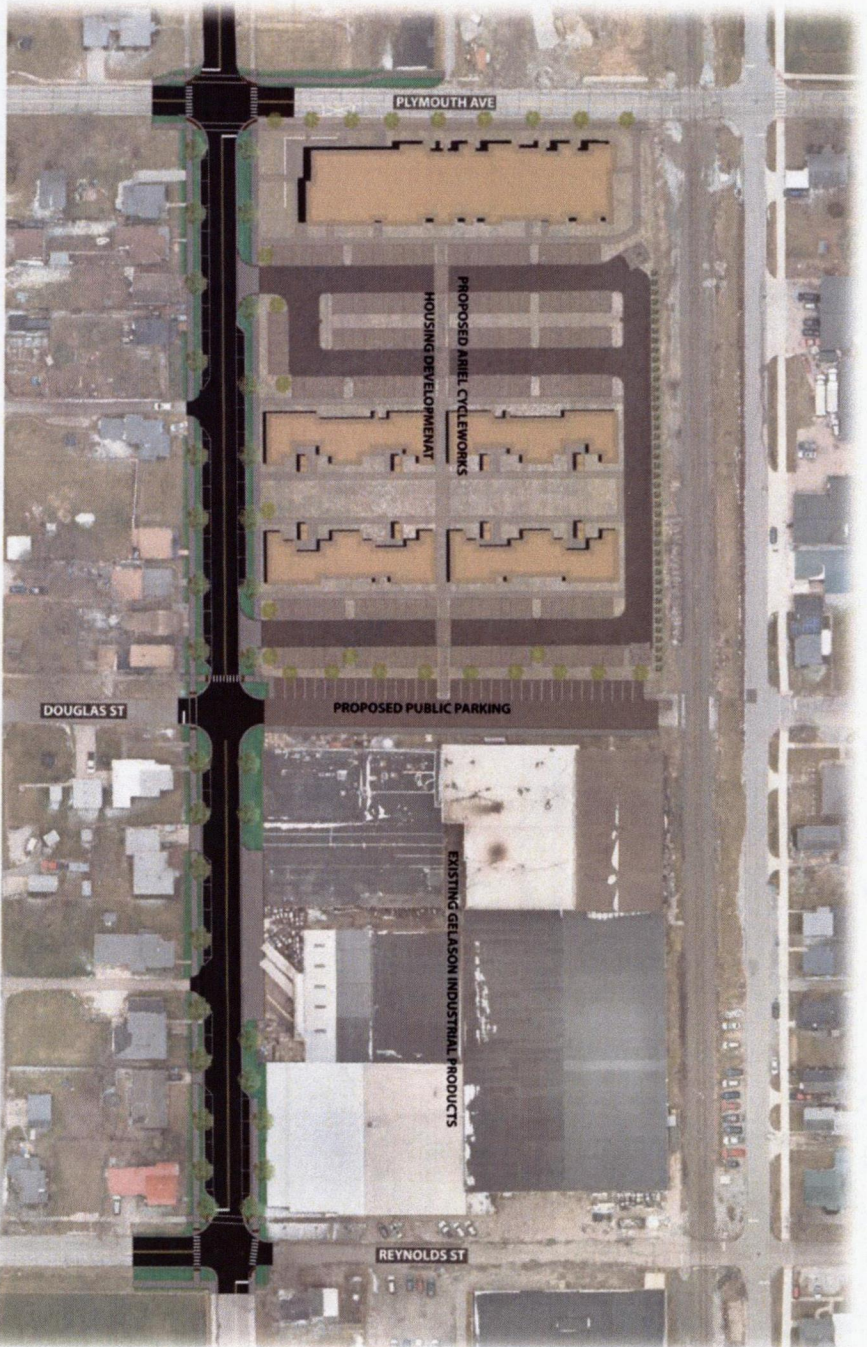






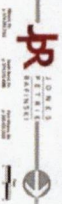


- Reliance & Peddlers
- Wilden Avenue
- Indiana Avenue
- Paving & Sidewalks
- East Lincoln Avenue
- Tenth Street
- Wellfield



10th AND DOUGLAS STREETSCAPE PROJECT

FIGURE NAME  
ADDITIONAL DETAILS



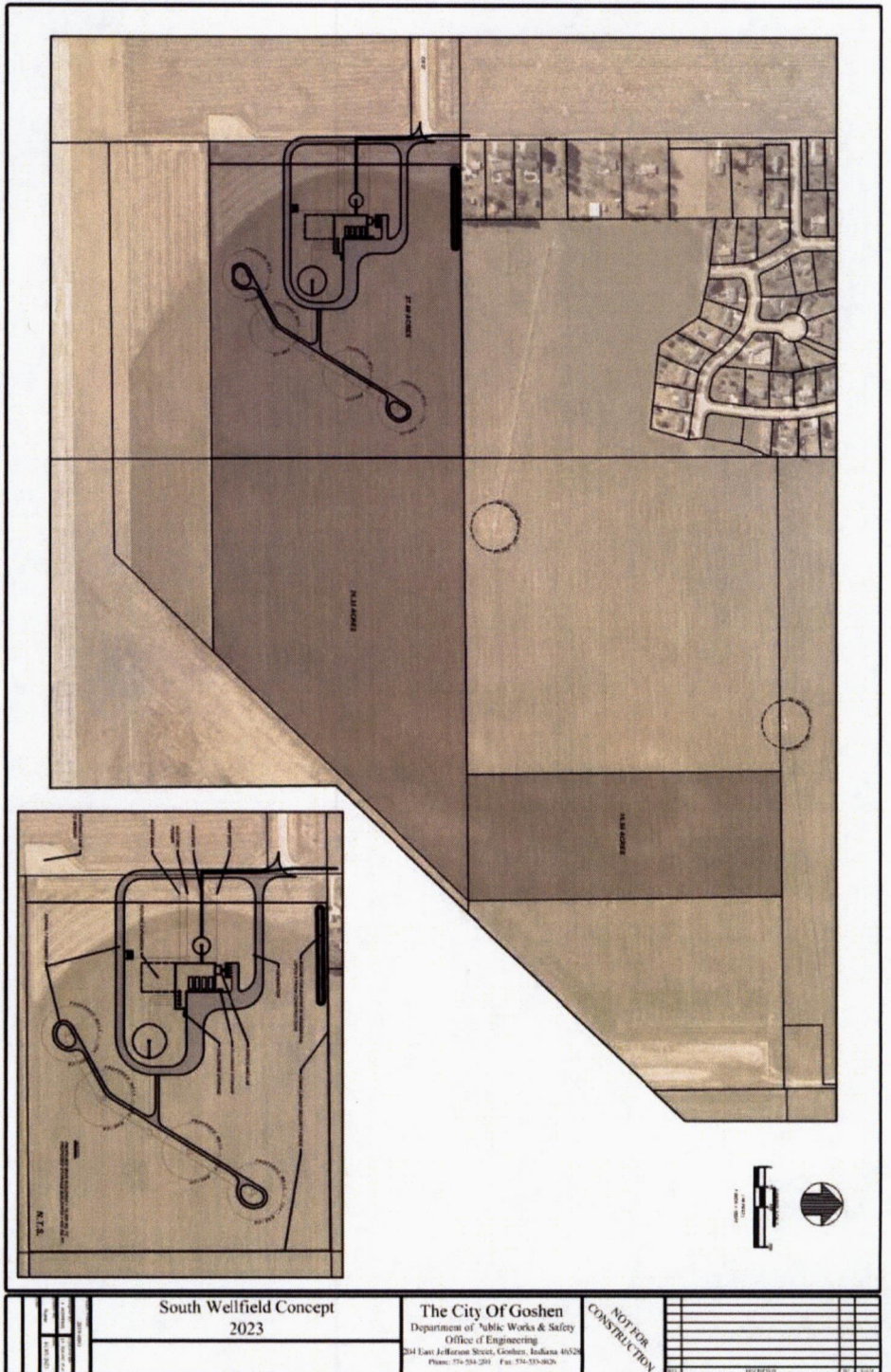
### Full Reconstruction

- Sewer and water replacement – Plymouth Ave. to Reynolds St.
- Storm sewer improvements – Plymouth Ave. to Reynolds St.
- Water main replacement from Jackson St. to Reynolds St.
- Scheduled for 2023



- Reliance & Peddlers
- Wilden Avenue
- Indiana Avenue
- Paving & Sidewalks
- East Lincoln Avenue
- Tenth Street

**Wellfield**



**New Wellfield Site**

- City has two wellfields with 10 million gallons per day of capacity
- Existing wellfields are on small parcels of land with no expansion potential
- New site is 79 acres in size, which offers expansion potential
- City controls development to the south with the airport
- Water quality testing occurring now
- Design in 2023 - 2024, with plans to construct in 2024-2025





# GPD POWERPOINT PRESENTATION

Because we are just as professional as the firefighters





# Jade Murphy

Elementary School Resource Officer





Jade's dream job



As an adult Jade made the noble  
decision to become a police  
officer





Jade was hired 2019

She often volunteers for community events

She is a Neighborhood Liaison for GPD

Jade has a Criminal Justice Degree from IUSB







Tara Powell – SRO at GIS

Tara has been a School Resource Officer for 7 years and a Goshen Police Officer for 19 years

Tara has been instrumental in the development of new SRO's

She is extremely empathetic and understanding

Kids and staff adore her



We all know women make  
smarter decisions than men





# This is Tara's husband

(between two ferns with Chief Sink)





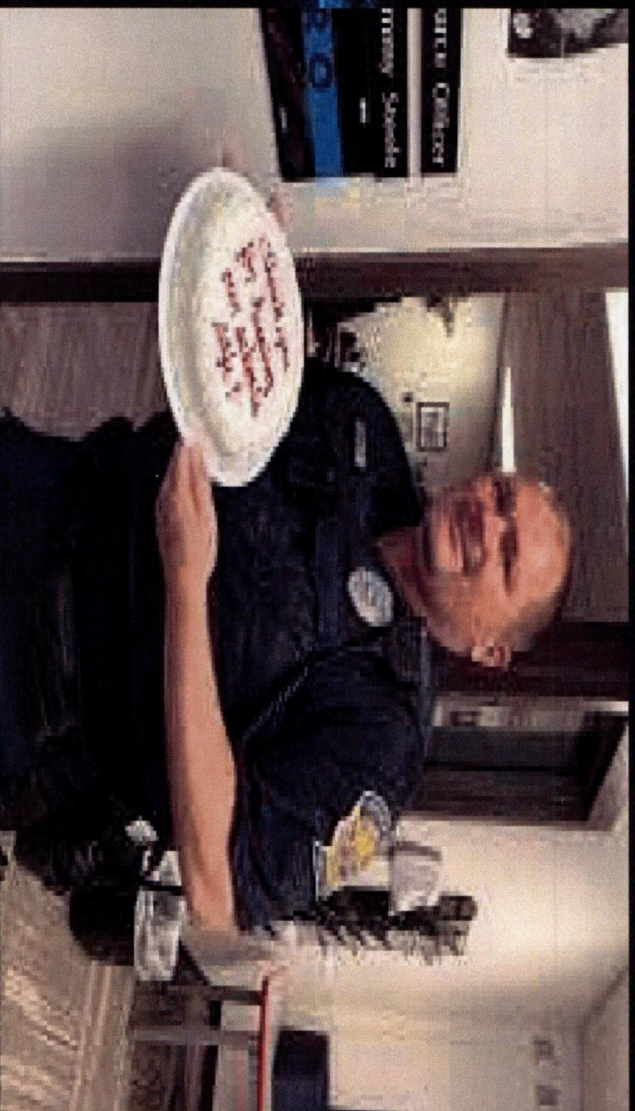
This is Tommy Steele

13 years as an SRO for the Goshen Middle School

18 years on the Goshen Police Department

Tommy is the State VP of INSROA

Tommy has developed strong bonds with many students over the years  
(and he has the largest office at the MS)





Jeff Eaton - High School SRO

Jeff has been with the HS for one (1) year

We pulled him from retirement after serving with EPD for 22 years. During that time he was an Administrative Captain, Homicide Detective, and he worked with me in a multi-jurisdictional task force.

**(DO NOT GOLF WITH JEFF)**





I wanted to feature our SRO's in this presentation because they have true passion for their responsibilities as an SRO. I promise you, our they are not some stone faced security presence. They know the impact they can have on students and staff, they are interactive, approachable, and empathetic, our SRO's hold themselves to a high standard.

SRO seeks out opportunities to identify and mentor students who appear to be engaged in risky behaviors. SRO is willing to spend quality time with "at risk" students, offering them productive advice and direction.





School Safety Initiatives  
Back to basics since Covid  
GPD, GFD, School Safety Specialist, and Educators

GOOD NEWS – SCHOOL GUARD WORKS!



Jim (James) Ballard – Behavioral Health Coordinator for Goshen

Jim has been an officer for 27 years, he is a CIT Coordinator and CIT certified.

Jim is well known in Elkhart County for his work in Behavioral Health



Jim has connections with many stakeholders in Elkhart County who are just as passionate about providing resources to those who are struggling with mental trauma, and in some cases, this leads to homelessness.

Jim is a CIT Coordinator through the National Alliance of Mental Health and CIT certified.

By using available grant money, this position was created by the mayor in 2022



Jim provides an assessment of their needs and coordinates the provisions of social services, including mental health treatment, healthcare, substance use disorder treatment and housing/shelter

He does this by using the Educate, Encourage, Enforcement policy documenting all offers of assistance including the acceptance or denial of available resources. This is done before any enforcement action is taken

In 2022, GPD conducted 121 Emergency Detentions

Jim has been a tremendous resource to the community and our patrol division



Jeremy  
**Stutsman**  
For Mayor

StutsmanForMayor.com



## ***City-Wide Safety***

Fostering safe neighborhoods by continuing to support the needs of Goshen Police, Fire, and Ambulance.

See how: [www.stutsmanfor mayor.com/platform](http://www.stutsmanfor mayor.com/platform)



---

# GOSHEN COMMUNITY SCHOOLS

FEBRUARY 13, 2023

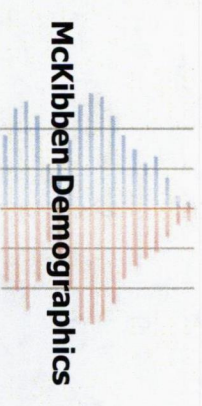
MCKIBBEN DEMOGRAPHIC RESEARCH, LLC

JEROME MCKIBBEN, PH.D.

ROCK HILL, SC

[j.mckibben@mckibbendemographics.com](mailto:j.mckibben@mckibbendemographics.com)



978-501-7069

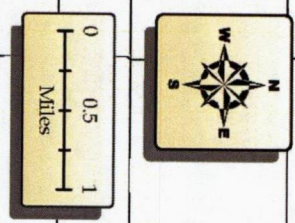




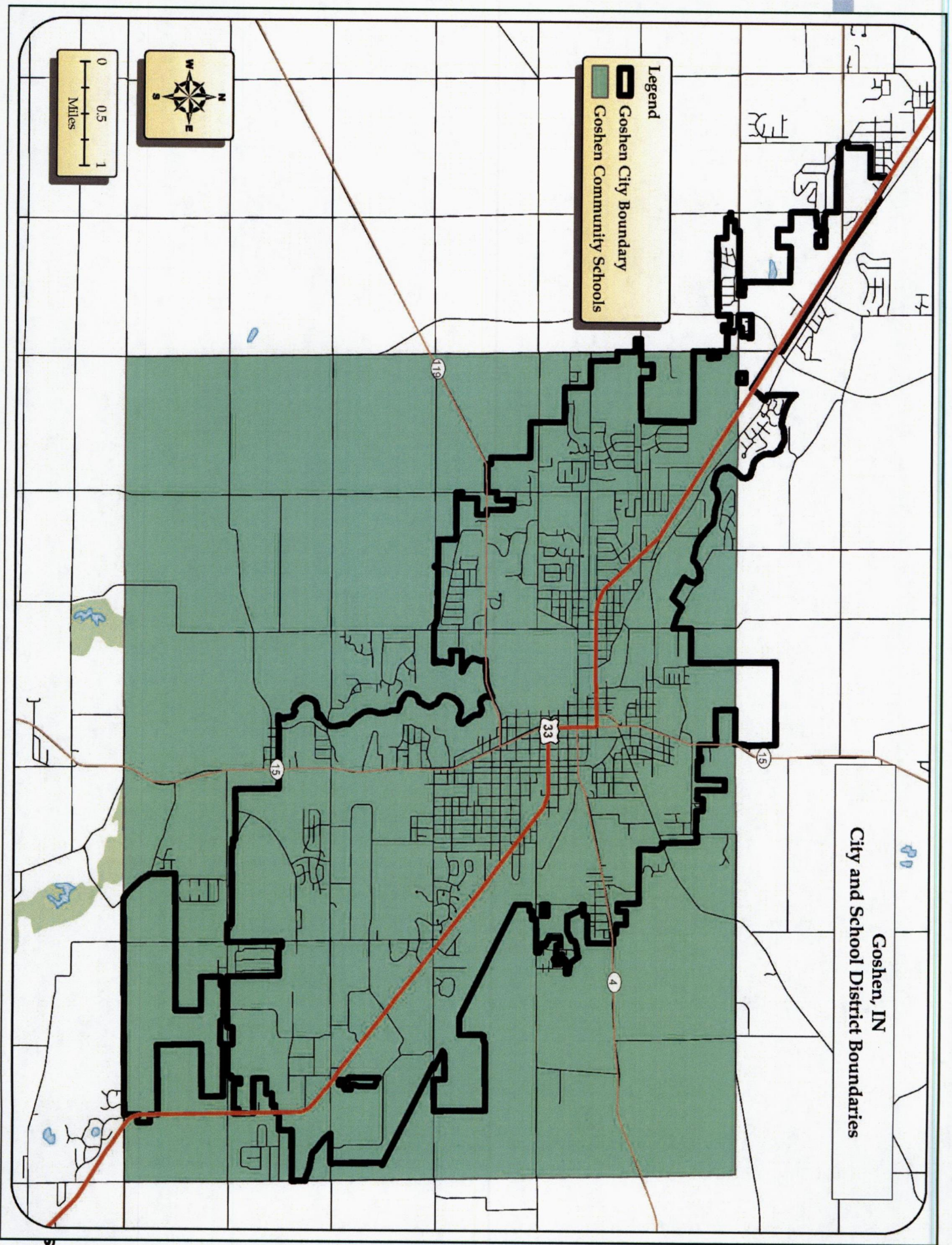
Goshen, IN  
City and School District Boundaries

**Legend**

-  Goshen City Boundary
-  Goshen Community Schools



A north arrow is located in the top right corner, showing cardinal directions (N, S, E, W). Below it is a scale bar labeled "Miles" with markings at 0, 0.5, and 1 mile.





## GOSHEN COMMUNITY SCHOOLS FORECAST ASSUMPTIONS

- a. The national, state or regional economy does not go into deep recession at anytime during the 10 years of the forecasts; (Deep recession is defined as four consecutive quarters where the GDP contracts greater than 1% per quarter)
- b. Interest rates have risen from their historic lows and will not fluctuate more than two percentage points in the short term; the interest rate for a 30-year fixed home mortgage stays between 5.0% and 7.0% for the 10 years of the forecasts;
- c. The rate of mortgage approval stays at 2022 levels and lenders do not return to “sub-prime” mortgage practices;
- d. There are no additional restrictions placed on home mortgage lenders or additional bankruptcies of major credit providers;
- e. The rate of housing foreclosures does not exceed 125% of the 2015-2020 average of Elkhart County for any year in the forecasts;
- f. All currently planned, platted, approved, and permitted housing developments are built out and completed by 2031. All new housing units constructed are occupied by 2032. Speculative new home construction plans are not included;
- g. The average annual unemployment rates for the Elkhart County and the Greater South Bend Elkhart Metropolitan Area will remain below 7.5% for the 10 years of the forecasts;
- h. The intra-district student transfer policy remains unchanged over the next 10 years;
- i. The rate of students transferring out of the Goshen Community Schools will remain at the 2018-19 to 2022-23 average. The district will average a net -500 transfers per year over the next decade;
- j. The inflation rate for gasoline will stay below 5% per year for the 10 years of the forecasts;

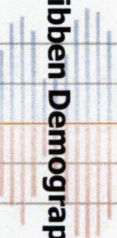
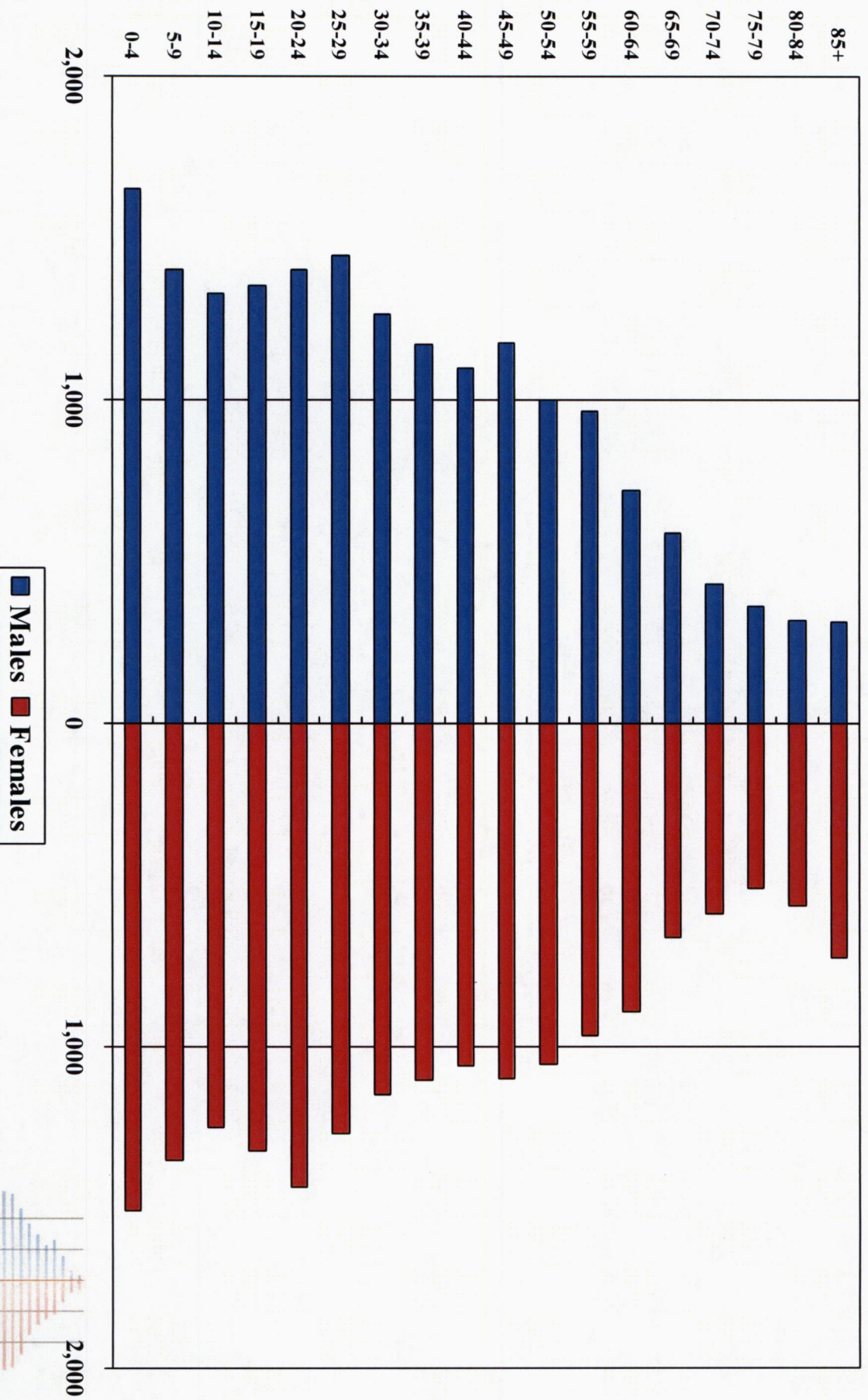


## GOSHEN COMMUNITY SCHOOLS FORECAST ASSUMPTIONS

- k. The state of Indiana does not change the current policy on open enrollment (unrestricted inter district transfers) or school vouchers anytime in the next 10 years;
- l. There will be no building moratorium within the district;
- m. Businesses within the district and the Goshen Community Schools area will remain viable;
- n. There are no new charter schools opened in the district or surrounding or expansion of existing charter schools over the next 10 years;
- o. The number of existing home sales in the district that are a result of “distress sales” (homes worth less than the current mortgage value) will not exceed 20% of total homes sales in the district for any given year;
- p. Housing turnover rates (sale of existing homes in the district) will remain at their current levels. The majority of existing home sales are made by homeowners over the age of 60;
- q. The district will have at least an average of 380 existing home sales per year for the next 10 years;
- r. The district will have at least an average of 40 new single-family housing units (including apartments) constructed per year over the next 10 years;
- s. Private school and home school attendance rates will remain constant at 2022 levels;
- t. The rate of foreclosures for commercial property remains at the 2015-2020 average for Elkhart County;
- u. The number of students engaging in virtual learning (both within and outside of the district) remains at the 2022 level.

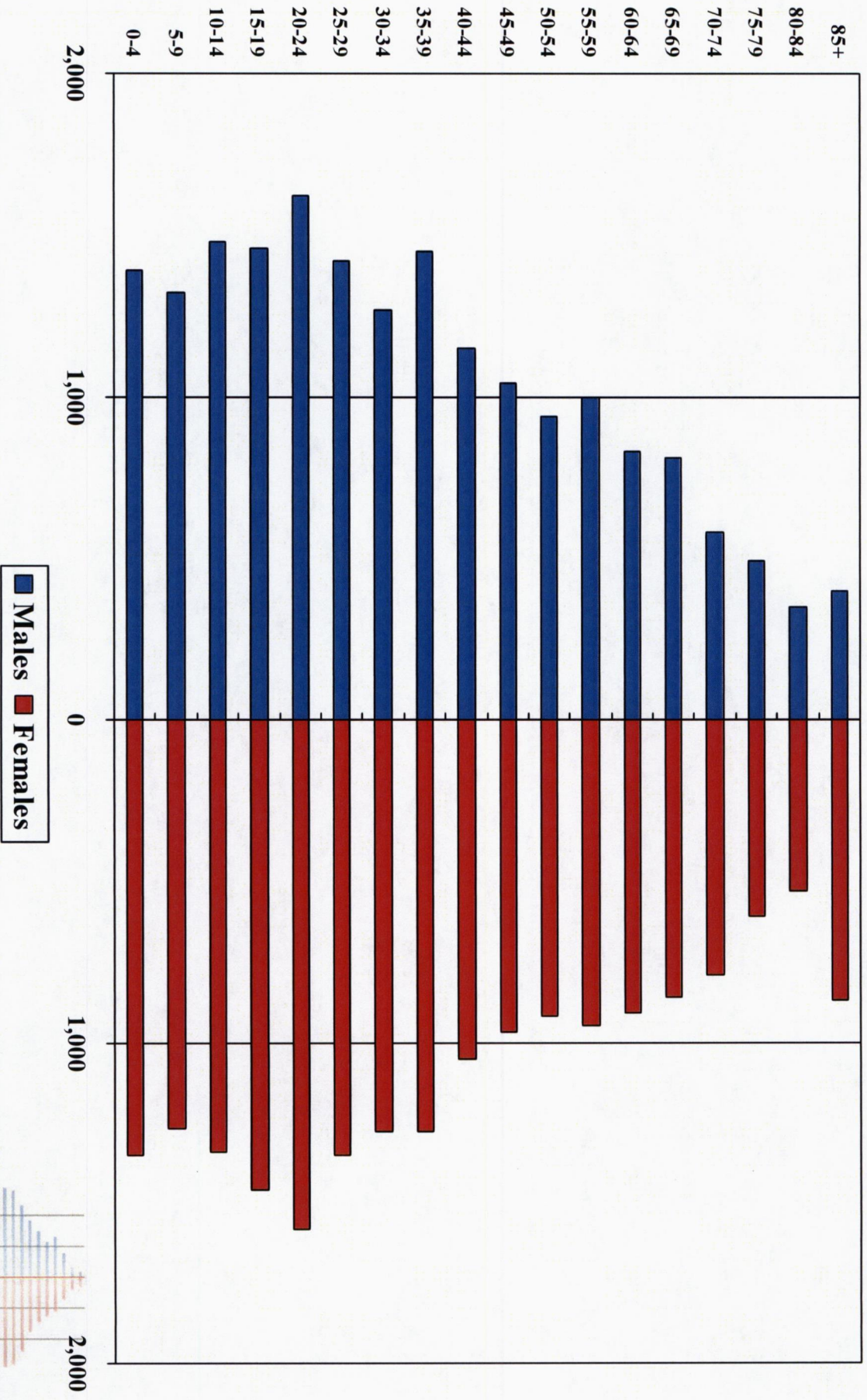


# Goshen Community Schools Total Population – 2010 Census





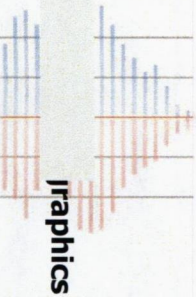
# Goshen Community Schools Total Population – 2020 Estimate





# GOSHEN COMMUNITY SCHOOLS POPULATION FORECAST

	2010	2015	2020	2025	2030
0-4	3,161	2,780	2,740	2,680	2,660
5-9	2,753	2,820	2,590	2,650	2,650
10-14	2,577	2,760	2,820	2,590	2,600
15-19	2,675	2,790	2,920	2,980	2,750
20-24	2,835	3,080	3,200	3,290	3,250
25-29	2,716	2,500	2,770	2,930	3,020
30-34	2,413	2,780	2,550	2,800	2,940
35-39	2,272	2,330	2,730	2,510	2,760
40-44	2,154	2,170	2,200	2,610	2,430
45-49	2,271	2,010	2,010	2,090	2,490
50-54	2,053	2,140	1,860	1,910	1,950
55-59	1,935	1,870	1,950	1,710	1,790
60-64	1,610	1,810	1,740	1,810	1,590
65-69	1,247	1,500	1,670	1,620	1,700
70-74	1,018	1,150	1,370	1,490	1,450
75-79	872	990	1,100	1,290	1,380
80-84	885	800	880	950	1,080
85+	1,040	1,210	1,270	1,370	1,450
<b>Total</b>	<b>36,487</b>	<b>37,490</b>	<b>38,370</b>	<b>39,280</b>	<b>39,940</b>
Median Age	33.2	33.6	34.2	34.5	35.2
Births	2,610	2,610	2,640	2,580	2,580
Deaths	1,470	1,570	1,700	1,700	1,820
Natural Increase	1,140	1,040	940	760	760
Net Migration	-120	-160	-70	-50	-50
<b>Change</b>	<b>1,020</b>	<b>880</b>	<b>870</b>	<b>710</b>	<b>710</b>





# GOSHEN COMMUNITY SCHOOLS TOTAL ENROLLMENT

	2019-20	2020-21	2021-22	2022-23	2023-24	2024-25	2025-26	2026-27	2027-28	2028-29	2029-30	2030-31	2031-32	2032-33
<b>K</b>	495	426	471	464	470	468	461	456	463	470	477	486	492	485
1	480	446	435	473	484	483	481	469	464	471	478	485	491	497
2	513	451	442	410	467	477	475	473	461	456	463	470	477	483
3	504	489	464	436	404	459	465	463	461	449	444	450	457	464
4	496	464	475	457	422	390	438	443	441	439	427	421	427	434
5	512	476	0	0	0	0	0	0	0	0	0	0	0	0
<b>Total K-5</b>	<b>3000</b>	<b>2752</b>	<b>2287</b>	<b>2240</b>	<b>2247</b>	<b>2277</b>	<b>2320</b>	<b>2304</b>	<b>2290</b>	<b>2285</b>	<b>2289</b>	<b>2312</b>	<b>2344</b>	<b>2363</b>
5	0	0	476	473	462	426	394	442	447	445	443	431	427	433
6	0	0	486	464	475	464	430	398	446	451	449	447	437	433
<b>Total: 5-6</b>	<b>0</b>	<b>0</b>	<b>962</b>	<b>937</b>	<b>937</b>	<b>890</b>	<b>824</b>	<b>840</b>	<b>893</b>	<b>896</b>	<b>892</b>	<b>878</b>	<b>864</b>	<b>866</b>
6	526	530	0	0	0	0	0	0	0	0	0	0	0	0
7	539	500	531	475	462	473	469	434	402	450	456	456	454	444
8	508	527	486	529	468	455	466	462	427	396	443	454	454	452
<b>Total: 6-8</b>	<b>1573</b>	<b>1557</b>	<b>1017</b>	<b>1004</b>	<b>930</b>	<b>928</b>	<b>935</b>	<b>896</b>	<b>829</b>	<b>846</b>	<b>899</b>	<b>910</b>	<b>908</b>	<b>896</b>
9	544	507	538	488	542	480	466	478	476	440	408	456	468	468
10	489	535	498	528	486	539	478	464	476	474	438	406	454	466
11	474	475	524	487	520	479	531	471	457	469	467	431	400	447
12	448	451	418	484	475	507	467	518	459	446	457	455	420	390
13	36	45	36	22	22	22	22	22	22	22	22	22	22	22
<b>Total: 9-13</b>	<b>1991</b>	<b>2013</b>	<b>2014</b>	<b>2010</b>	<b>2045</b>	<b>2027</b>	<b>1964</b>	<b>1953</b>	<b>1890</b>	<b>1851</b>	<b>1792</b>	<b>1770</b>	<b>1764</b>	<b>1793</b>
<b>Total K-13</b>	<b>6564</b>	<b>6322</b>	<b>6280</b>	<b>6191</b>	<b>6159</b>	<b>6122</b>	<b>6043</b>	<b>5993</b>	<b>5902</b>	<b>5878</b>	<b>5872</b>	<b>5870</b>	<b>5880</b>	<b>5918</b>
<b>Total K-13 Change</b>	6564	6322	6280	6191	6159	6122	6043	5993	5902	5878	5872	5870	5880	5918
<b>%-Change</b>		-2.42	-42	-89	-32	-37	-79	-50	-91	-24	-6	-2	10	38
		-3.7%	-0.7%	-1.4%	-0.5%	-0.6%	-1.3%	-0.8%	-1.5%	-0.4%	-0.1%	-0.1%	0.17%	0.65%
<b>Total: K-5 Change</b>	3000	2752	2287	2240	2247	2277	2320	2304	2290	2285	2289	2312	2344	2363
<b>%-Change</b>	0.23%	-8.2%	-17%	-2.1%	0.3%	1.3%	1.9%	-0.7%	-0.6%	-0.2%	0.18%	1.00%	1.38%	0.81%
<b>Total: 5-6 Change</b>	0	0	962	937	937	890	824	840	893	896	892	878	864	866
<b>%-Change</b>	0	0	962	937	937	890	824	840	893	896	892	878	864	866
				-2.6%	0.0%	-5.0%	-7.4%	1.9%	6.3%	0.34%	-0.5%	-1.6%	-1.6%	0.23%
<b>Total: 6-8 Change</b>	1573	1557	1017	1004	930	928	935	896	829	846	899	910	908	896
<b>%-Change</b>	-1.0%	-1.0%	-34%	-1.3%	-7.4%	-0.2%	0.75%	-4.2%	-7.5%	2.05%	6.26%	1.22%	-0.2%	-1.3%
<b>Total: 9-13 Change</b>	1991	2013	2014	2010	2045	2027	1964	1953	1890	1851	1792	1770	1764	1793
<b>%-Change</b>	1.10%	0.05%		-0.2%	1.75%	-0.9%	-3.1%	-0.6%	-3.2%	-2.1%	-3.2%	-1.2%	-0.3%	1.64%



## CITY OF GOSHEN FORECAST ASSUMPTIONS

- a. The national, state or regional economy does not go into deep recession at anytime during the 10 years of the forecasts; (Deep recession is defined as four consecutive quarters where the GDP contracts greater than 1% per quarter)
- b. Interest rates have risen from their historic lows and will not fluctuate more than two percentage points in the short term; the interest rate for a 30-year fixed home mortgage stays between 5.0% and 7.0% for the 10 years of the forecasts;
- c. The rate of mortgage approval stays at 2022 levels and lenders do not return to “sub-prime” mortgage practices;
- d. There are no additional restrictions placed on home mortgage lenders or additional bankruptcies of major credit providers;
- e. The rate of housing foreclosures does not exceed 125% of the 2015-2020 average of Elkhart County for any year in the forecasts;
- f. All currently planned, platted, approved, and permitted housing developments are built out and completed by 2031. All new housing units constructed are occupied by 2032. Speculative new home construction plans are not included;
- g. The average annual unemployment rates for the Elkhart County and the Greater South Bend Elkhart Metropolitan Area will remain below 7.5% for the 10 years of the forecasts;
- h. The inflation rate for gasoline will stay below 5% per year for the 10 years of the forecasts;
- i. The state of Indiana does not change the current policy on open enrollment (unrestricted inter district transfers) or school vouchers anytime in the next 10 years;
- j. There will be no building moratorium within the city;



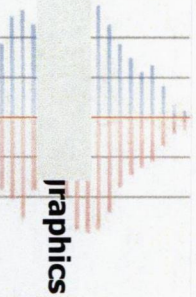
## CITY OF GOSHEN FORECAST ASSUMPTIONS

- k. Businesses within the city and the Greater Elkhart County area will remain viable;
- l. The number of existing home sales in the city that are a result of “distress sales” (homes worth less than the current mortgage value) will not exceed 20% of total homes sales in the city for any given year;
- m. Housing turnover rates (sale of existing homes in the city) will remain at their current levels. The majority of existing home sales are made by homeowners over the age of 60;
- n. The city will have at least an average of 360 existing home sales per year for the next 10 years;
- o. The city will have at least an average of 30 new single-family housing units (including apartments) constructed per year over the next 10 years;
- p. The rate of foreclosures for commercial property remains at the 2015-2020 average for Elkhart County;
- q. There will be no annexations of additional territory into the City of Goshen at anytime over the rest of this decade.



# CITY OF GOSHEN POPULATION FORECAST

	2010	2015	2020	2025	2030
0-4	2,957	2,640	2,450	2,390	2,300
5-9	2,494	2,520	2,430	2,270	2,210
10-14	2,271	2,470	2,480	2,390	2,230
15-19	2,418	2,350	2,530	2,500	2,450
20-24	2,681	2,570	2,470	2,650	2,580
25-29	2,513	2,590	2,490	2,410	2,580
30-34	2,195	2,420	2,510	2,420	2,350
35-39	2,025	2,180	2,350	2,440	2,360
40-44	1,878	2,010	2,100	2,300	2,400
45-49	1,950	1,860	1,990	2,080	2,270
50-54	1,715	1,930	1,840	1,970	2,050
55-59	1,608	1,680	1,880	1,790	1,920
60-64	1,338	1,560	1,620	1,820	1,730
65-69	1,152	1,270	1,470	1,540	1,720
70-74	949	1,070	1,190	1,370	1,430
75-79	862	830	950	1,050	1,210
80-84	867	710	690	770	850
85+	1,040	1,130	1,090	1,060	1,090
<b>Total</b>	<b>32,913</b>	<b>33,790</b>	<b>34,530</b>	<b>35,220</b>	<b>35,730</b>
Median Age	32.6	33.6	34.8	36.2	37.5
Births	2,670	2,490	2,420	2,330	2,330
Deaths	1,400	1,410	1,450	1,530	1,530
Natural Increase	1,270	1,080	970	800	800
Net Migration	-390	-340	-290	-270	-270
<b>Change</b>	<b>880</b>	<b>740</b>	<b>680</b>	<b>530</b>	<b>530</b>





# CHAMBERLAIN ELEMENTARY TOTAL ENROLLMENT

	2019-20	2020-21	2021-22	2022-23	2023-24	2024-25	2025-26	2026-27	2027-28	2028-29	2029-30	2030-31	2031-32	2032-33
<b>K</b>	46	27	46	40	44	46	46	47	47	47	48	48	49	50
<b>1</b>	54	53	36	50	45	47	49	48	48	49	49	50	50	51
<b>2</b>	50	55	52	38	51	46	48	50	49	49	50	50	51	51
<b>3</b>	46	38	62	68	40	53	49	51	51	50	50	51	51	52
<b>4</b>	55	74	57	64	71	42	55	49	51	53	52	51	52	52
<b>5</b>	51	38	0	0	0	0	0	0	0	0	0	0	0	0
<b>Total K-5</b>	<b>302</b>	<b>285</b>	<b>253</b>	<b>260</b>	<b>251</b>	<b>234</b>	<b>245</b>	<b>242</b>	<b>246</b>	<b>248</b>	<b>249</b>	<b>250</b>	<b>253</b>	<b>256</b>
<b>Change</b>		-17	-32	7	-9	-17	11	-3	4	2	1	1	3	3
<b>%-Change</b>		-5.6%	-11%	2.8%	-3.5%	-6.8%	4.7%	-1.2%	1.7%	0.8%	0.4%	0.4%	1.2%	1.19%



# CHANDLER ELEMENTARY TOTAL ENROLLMENT

	2019-20	2020-21	2021-22	2022-23	2023-24	2024-25	2025-26	2026-27	2027-28	2028-29	2029-30	2030-31	2031-32	2032-33
<b>K</b>	46	32	50	46	47	48	47	46	47	48	49	50	51	52
<b>1</b>	39	37	39	50	45	45	46	45	44	45	46	47	48	49
<b>2</b>	65	45	37	39	51	46	46	47	46	45	46	47	48	49
<b>3</b>	58	48	37	39	36	47	42	42	43	42	41	42	43	44
<b>4</b>	83	56	58	37	40	37	46	41	41	42	41	40	41	42
<b>5</b>	73	84	0	0	0	0	0	0	0	0	0	0	0	0
<b>Total K-5</b>	<b>364</b>	<b>302</b>	<b>221</b>	<b>211</b>	<b>219</b>	<b>223</b>	<b>227</b>	<b>221</b>	<b>221</b>	<b>222</b>	<b>223</b>	<b>226</b>	<b>231</b>	<b>236</b>
<b>Change</b>		-62	-81	-10	8	4	4	-6	0	1	1	3	5	5
<b>%-Change</b>		-17%	-27%	-4.5%	3.8%	1.8%	1.8%	-2.6%	0.0%	0.5%	0.5%	1.3%	2.2%	2.2%



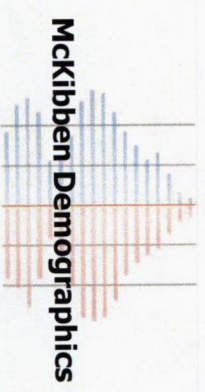
# MODEL ELEMENTARY TOTAL ENROLLMENT

	2019-20	2020-21	2021-22	2022-23	2023-24	2024-25	2025-26	2026-27	2027-28	2028-29	2029-30	2030-31	2031-32	2032-33
<b>K</b>	115	76	96	104	102	102	100	98	99	100	101	103	104	103
<b>1</b>	103	121	98	105	107	108	108	105	103	104	105	106	107	108
<b>2</b>	103	98	113	90	101	103	105	105	102	100	101	102	103	104
<b>3</b>	111	99	103	105	89	100	102	104	104	101	99	99	100	101
<b>4</b>	106	92	85	93	97	82	92	94	96	96	93	91	91	92
<b>5</b>	97	127	0	0	0	0	0	0	0	0	0	0	0	0
<b>Total K-5</b>	635	613	495	497	496	495	507	506	504	501	499	501	505	508
<b>Total K-5</b>	635	613	495	497	496	495	507	506	504	501	499	501	505	508
<b>Change</b>		-22	-118	2	-1	-1	12	-1	-2	-3	-2	2	4	3
<b>%-Change</b>		-3.5%	-19%	0.4%	-0.2%	-0.2%	2.4%	-0.2%	-0.4%	-0.6%	-0.4%	0.4%	0.8%	0.6%



# PARKSIDE ELEMENTARY TOTAL ENROLLMENT

	2019-20	2020-21	2021-22	2022-23	2023-24	2024-25	2025-26	2026-27	2027-28	2028-29	2029-30	2030-31	2031-32	2032-33
<b>K</b>	40	37	43	64	58	57	57	55	56	57	58	61	62	60
<b>1</b>	63	52	47	52	71	68	67	65	63	64	65	66	67	68
<b>2</b>	56	76	44	40	50	68	64	63	61	59	60	60	61	62
<b>3</b>	66	66	60	36	38	47	63	59	58	56	54	55	55	56
<b>4</b>	62	45	55	58	33	35	42	57	53	52	50	49	50	50
<b>5</b>	61	68	0	0	0	0	0	0	0	0	0	0	0	0
<b>Total K-5</b>	<b>348</b>	<b>344</b>	<b>249</b>	<b>250</b>	<b>250</b>	<b>275</b>	<b>293</b>	<b>299</b>	<b>291</b>	<b>288</b>	<b>287</b>	<b>291</b>	<b>295</b>	<b>296</b>
<b>Total K-5</b>	348	344	249	250	250	275	293	299	291	288	287	291	295	296
<b>Change</b>		-4	-95	1	0	25	18	6	-8	-3	-1	4	4	1
<b>%-Change</b>		-1.1%	-28%	0.4%	0.0%	10.0%	6.5%	2.0%	-2.7%	-1.0%	-0.3%	1.4%	1.4%	0.3%





# PRAIRIE VIEW ELEMENTARY TOTAL ENROLLMENT

	2019-20	2020-21	2021-22	2022-23	2023-24	2024-25	2025-26	2026-27	2027-28	2028-29	2029-30	2030-31	2031-32	2032-33
<b>K</b>	103	94	99	70	79	77	76	77	78	80	81	81	82	79
<b>1</b>	60	57	75	77	72	71	69	67	68	69	71	72	73	74
<b>2</b>	80	57	73	65	79	74	72	70	68	69	70	72	73	74
<b>3</b>	79	82	58	73	66	81	75	73	71	69	70	71	73	74
<b>4</b>	52	56	68	58	69	62	75	69	67	65	63	63	64	66
<b>5</b>	97	39	0	0	0	0	0	0	0	0	0	0	0	0
<b>Total K-5</b>	<b>471</b>	<b>385</b>	<b>373</b>	<b>343</b>	<b>365</b>	<b>365</b>	<b>367</b>	<b>356</b>	<b>352</b>	<b>352</b>	<b>355</b>	<b>359</b>	<b>365</b>	<b>367</b>
<b>Total K-5</b>	471	385	373	343	365	365	367	356	352	352	355	359	365	367
<b>Change</b>		-86	-12	-30	22	0	2	-11	-4	0	3	4	6	2
<b>%-Change</b>		-18%	-3.1%	-8.0%	6.4%	0.0%	0.5%	-3.0%	-1.1%	0.0%	0.9%	1.1%	1.7%	0.5%



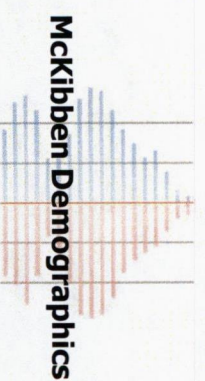
# WATERFORD ELEMENTARY TOTAL ENROLLMENT

	2019-20	2020-21	2021-22	2022-23	2023-24	2024-25	2025-26	2026-27	2027-28	2028-29	2029-30	2030-31	2031-32	2032-33
<b>K</b>	96	76	87	96	92	90	89	88	89	90	91	93	94	92
<b>1</b>	95	67	87	91	99	98	96	94	93	94	95	96	97	98
<b>2</b>	103	70	82	82	89	97	96	94	92	91	92	93	94	95
<b>3</b>	75	71	86	76	80	86	94	93	91	89	88	89	90	91
<b>4</b>	83	92	96	85	74	78	84	92	91	89	87	86	87	88
<b>5</b>	71	79	0	0	0	0	0	0	0	0	0	0	0	0
<b>Total K-5</b>	<b>523</b>	<b>455</b>	<b>438</b>	<b>430</b>	<b>434</b>	<b>449</b>	<b>459</b>	<b>461</b>	<b>456</b>	<b>453</b>	<b>453</b>	<b>457</b>	<b>462</b>	<b>464</b>
<b>Total K-5</b>	523	455	438	430	434	449	459	461	456	453	453	457	462	464
<b>Change</b>		-68	-17	-8	4	15	10	2	-5	-3	0	4	5	2
<b>%-Change</b>		-13%	-3.7%	-1.8%	0.9%	3.5%	2.2%	0.4%	-1.1%	-0.7%	0.0%	0.9%	1.1%	0.4%



# WEST GOSHEN ELEMENTARY TOTAL ENROLLMENT

	2019-20	2020-21	2021-22	2022-23	2023-24	2024-25	2025-26	2026-27	2027-28	2028-29	2029-30	2030-31	2031-32	2032-33
<b>K</b>	49	84	50	44	48	48	46	46	47	48	49	50	50	49
<b>1</b>	66	59	53	48	45	46	46	45	45	46	47	48	49	49
<b>2</b>	56	50	41	56	46	43	44	44	43	43	44	46	47	48
<b>3</b>	69	85	58	39	55	45	42	43	43	42	42	43	45	46
<b>4</b>	55	49	56	62	38	54	44	41	42	42	41	41	42	44
<b>5</b>	62	41	0	0	0	0	0	0	0	0	0	0	0	0
<b>Total K-5</b>	<b>357</b>	<b>368</b>	<b>258</b>	<b>249</b>	<b>232</b>	<b>236</b>	<b>222</b>	<b>219</b>	<b>220</b>	<b>221</b>	<b>223</b>	<b>228</b>	<b>233</b>	<b>236</b>
<b>Total K-5</b>	<b>357</b>	<b>368</b>	<b>258</b>	<b>249</b>	<b>232</b>	<b>236</b>	<b>222</b>	<b>219</b>	<b>220</b>	<b>221</b>	<b>223</b>	<b>228</b>	<b>233</b>	<b>236</b>
<b>Change</b>		11	-110	-9	-17	4	-14	-3	1	1	2	5	5	3
<b>%-Change</b>		3.1%	-30%	-3.5%	-6.8%	1.7%	-5.9%	-1.4%	0.46%	0.45%	0.90%	2.24%	2.19%	1.29%





# GOSHEN MIDDLE SCHOOL TOTAL ENROLLMENT

	2019-20	2020-21	2021-22	2022-23	2023-24	2024-25	2025-26	2026-27	2027-28	2028-29	2029-30	2030-31	2031-32	2032-33
5	0	0	476	473	462	426	394	442	447	445	443	431	427	433
6	0	0	486	464	475	464	430	398	446	451	449	447	437	433
<b>Total 5-6</b>	<b>0</b>	<b>0</b>	<b>962</b>	<b>937</b>	<b>937</b>	<b>890</b>	<b>824</b>	<b>840</b>	<b>893</b>	<b>896</b>	<b>892</b>	<b>878</b>	<b>864</b>	<b>866</b>
<b>Total 5-6</b>	0	0	962	937	937	890	824	840	893	896	892	878	864	866
<b>Change</b>	0	0	962	-25	0	-47	-66	16	53	3	-4	-14	-14	2
<b>%-Change</b>				-2.6%	0.00%	-5.0%	-7.4%	1.94%	6.31%	0.34%	-0.5%	-1.6%	-1.6%	0.23%



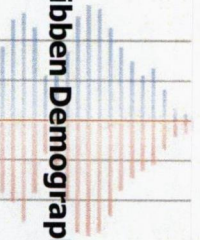
# GOSHEN JUNIOR HIGH SCHOOL TOTAL ENROLLMENT

	2019-20	2020-21	2021-22	2022-23	2023-24	2024-25	2025-26	2026-27	2027-28	2028-29	2029-30	2030-31	2031-32	2032-33
6	526	530	0	0	0	0	0	0	0	0	0	0	0	0
7	539	500	531	475	462	473	469	434	402	450	456	456	454	444
8	508	527	486	529	468	455	466	462	427	396	443	454	454	452
<b>Total 6-8</b>	<b>1573</b>	<b>1557</b>	<b>1017</b>	<b>1004</b>	<b>930</b>	<b>928</b>	<b>935</b>	<b>896</b>	<b>829</b>	<b>846</b>	<b>899</b>	<b>910</b>	<b>908</b>	<b>896</b>
<b>Total 6-8</b>	1573	1557	1017	1004	930	928	935	896	829	846	899	910	908	896
<b>Change</b>		-16	-540	-13	-74	-2	7	-39	-67	17	53	11	-2	-12
<b>%-Change</b>		-1.0%	-35%	-1.3%	-7.4%	-0.2%	0.8%	-4.2%	-7.5%	2.05%	6.26%	1.22%	-0.2%	-1.3%



# GOSHEN HIGH SCHOOL TOTAL ENROLLMENT

	2019-20	2020-21	2021-22	2022-23	2023-24	2024-25	2025-26	2026-27	2027-28	2028-29	2029-30	2030-31	2031-32	2032-33
9	544	507	538	488	542	480	466	478	476	440	408	456	468	468
10	489	535	498	528	486	539	478	464	476	474	438	406	454	466
11	474	475	524	487	520	479	531	471	457	469	467	431	400	447
12	448	451	418	484	475	507	467	518	459	446	457	455	420	390
13	36	45	36	22	22	22	22	22	22	22	22	22	22	22
<b>Total 9-13</b>	<b>1991</b>	<b>2013</b>	<b>2014</b>	<b>2010</b>	<b>2045</b>	<b>2027</b>	<b>1964</b>	<b>1953</b>	<b>1890</b>	<b>1851</b>	<b>1792</b>	<b>1770</b>	<b>1764</b>	<b>1793</b>
<b>Total 9-13</b>	1991	2013	2014	2010	2045	2027	1964	1953	1890	1851	1792	1770	1764	1793
<b>Change</b>		22	1	-4	35	-18	-63	-11	-63	-39	-59	-22	-6	29
<b>%-Change</b>		1.10%	0.05%	-0.2%	1.75%	-0.9%	-3.1%	-0.6%	-3.2%	-2.1%	-3.2%	-1.2%	-0.3%	1.64%





# GHS Graduation Rate





Data from IDOE

# GHS Grad Rate, Trend

**Goshen High**  
**State Average**



2018

2019

2020

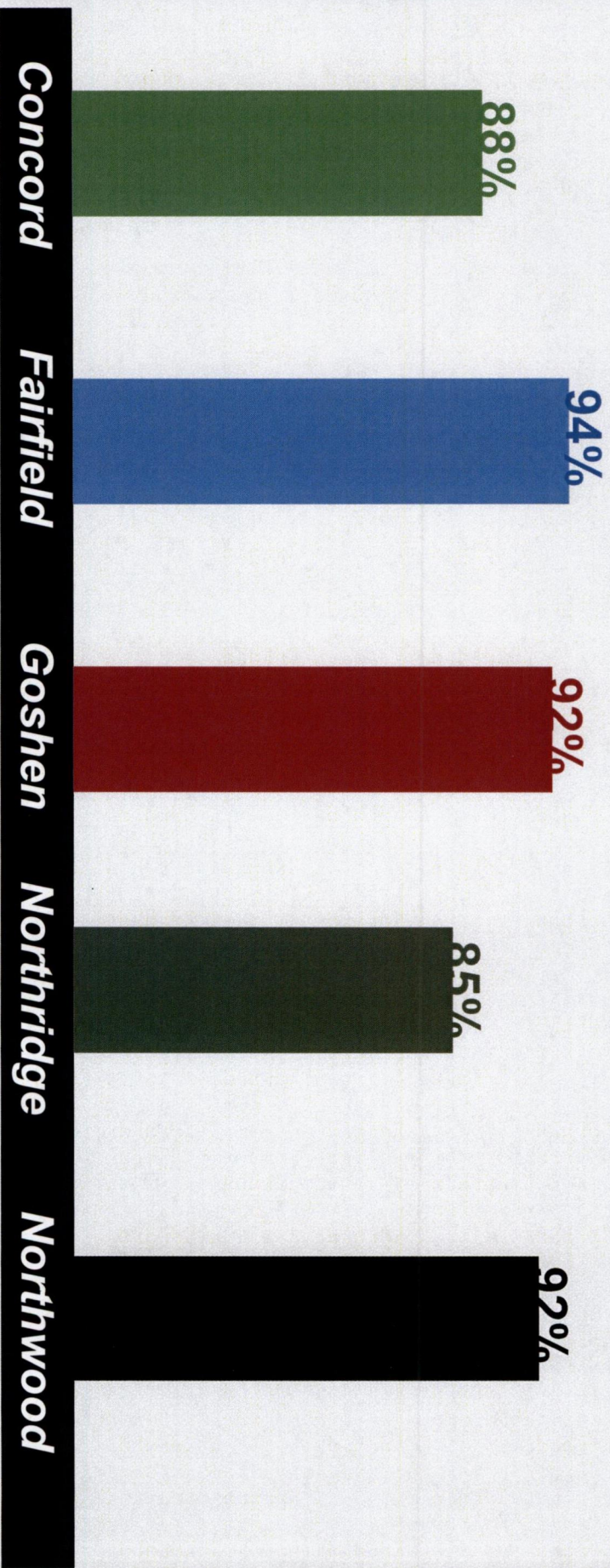
2021

2022



Data from IDOE

# 2022 Grad Rate, Area Schools





## ***Why Increase the Grad Rate?***

- *Compared to a high school dropout, a high school graduate yields a public benefit of over \$200,000 more in lower government spending and increased tax revenue. If the number of dropouts were cut in half, the government would realize a \$45 billion savings and revenue. (Levin, 2007)*

*H. Levin, et al., "the Costs and Benefits of an Excellent Education for All of America's Children" (New York, NY: Center for Cost-Benefit Studies of Education Teachers College, Columbia University, 2007)*



## **Why Increase the Grad Rate?**

- *If the male graduation rate was increased by just 5%, we would likely see a savings of \$4.9 billion in crime-related costs.*  
(Alliance for Excellent Education, 2006)

*Alliance for Excellent Education, "Saving Futures, Saving Dollars: The Impact of Education on Crime Reduction and Earnings" (Washington, DC: Author, 2006)*



## **Why Increase the Grad Rate?**

- *Cutting the dropout rate in half for just one year would likely support as many as 54,000 new jobs and increase the gross domestic product by as much as \$9.6 billion.*  
(Alliance for Excellent Education, 2011)

*Alliance for Excellent Education, "Education and the Economy: Boosting the Nation's Economy by Improving High School Graduation Rates" (Washington, DC: Author, 2011).*



## ***Why Increase the Grad Rate?***

- *High school dropouts will earn \$260,000 less than their high school graduate peers over their lifetime. (JAG, 2022)*



# ***GHS Graduation Rate Supports***

- Freshman Teams
- Pathway Options
- Early College
- Dual Credit and Indiana Core Curriculum
- Internship
- Apprenticeship
- Work Experience



# Model Elementary

*Traffic Improvement*



*Inspiring Innovation... Empowering Potential... Enriching Our World*



## What are the current issues?

- Berkeley Ave and Green Road congestion
- Safety concerns students and traffic
- Model staff arrival difficulty due to traffic
- Improve relationships between school and the public



## Improved Traffic - Less Congestion

- Model Student count is currently 492
- Bus riders account for only 223
- There are approximately 80-100 cars that stage for student pick up
- Some students walk
- There is approximately 70 staff members including Office, Teachers, Paraprofessional, Kitchen, and Custodial



## Improved Student Safety

- Separating the bus traffic and staff parking from parent drop off.
- Staff timely arrival allowing them to be available for student arrival.
- Relieving congestion at the intersection of Greene and Berkey, reducing risk of accidents and backup.
- Students will be safer at the intersection when they are crossing.



# New Parent Driveway

- The new drive will focus traffic on the north side of the school. This should free up the congestion at the Berkey and Green Rd intersection.
- The drive will enter off the Pringle Dr. on the east side of the solar field and run to the south side of the solar field and return to the west entering the parking lot.
- This should allow for nearly 100 cars to stage up waiting on student release.



*Inspiring Innovation... Empowering Potential... Enriching Our World*



# Staff Parking and Bus Area

- This will keep the bus traffic separate from Parent traffic.
- Staff will have less trouble pulling into the parking driveway with less traffic at the intersection.



*Inspiring Innovation... Empowering Potential... Enriching Our World*



# Timeline

- Bids were received at the end of January.
- The substantial completion date will be the end of July.
- Communication to parents will begin starting at the end of this school year. Parents will be given more detailed information prior to the start of the new school year.