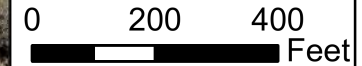
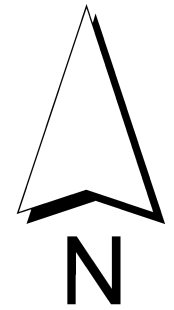
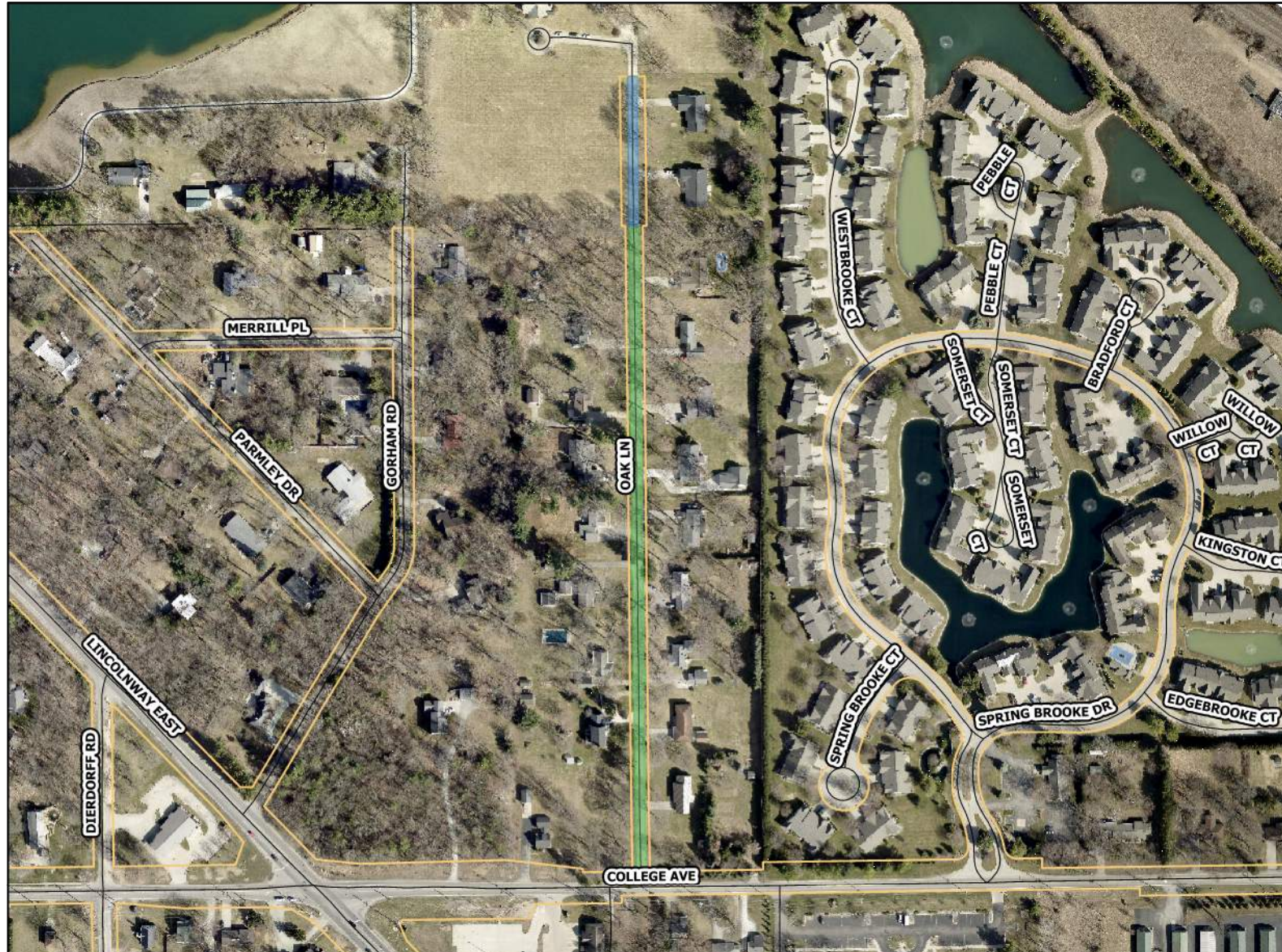


2023 City of Goshen Paving Package

Oak Lane from US 33 to Dead End.



Legend

- Full-Depth Reclamation
- Full-Depth Replacement
- Mill and Pave
- Mill and Pave w/ Full-Depth Patching
- Overlay
- Overlay w/ Full-Depth Patching

Street	Area	Activity
Oak Lane	3,300 sqYd	Mill and Pave
Oak Lane	654 sqYd	Full-Depth Replacement

Full Depth Section
 1 1/2" HMA Surface
 2" HMA Binder
 4" HMA Base
 4" No. 53 Recycled Concrete

Mill and Pave
 2" Mill Depth
 2" HMA Surface

Note:
 Full depth removal section is concrete

