

## Mayor's Message (continued from page 1)

crumbled, cities across the country are now building entirely new "downtowns" on their peripheries, referring to them as "lifestyle centers" and "new urbanism." What we have in downtown Goshen is uniquely ours. It is *authentic* urbanism.

Even community residents who don't own a property or business downtown have a vested interest. It is the core of our community. Beginning in the early to mid-1800s, we grew out from it. It is literally the "face of the city" ... a first and lasting impression that visitors have of the Maple City. They could be tourists who may or may not return, and some might think the impressions of the visitors don't matter. But they often tell others about their experiences. Or, more importantly, visitors may be people looking to move to the area for a new job and are scouting our city. Or they might be corporate folks looking at Goshen as a potential site for establishing their business and creating new employment opportunities.

In all cases, impressions of visitors are important. There is a belief within the national and State of Indiana Main Street programs (part of the National Trust for Historic Preservation) that how a community feels about itself is reflected in its downtown. If it is vibrant and well-kept, it projects a great community image. On the other hand, if many of its properties look shabby and vacant, it projects a very different self-image. Fortunately, Goshen's downtown fits the first category. As the downtown thrives, so can the rest of the community.

Many people from outside of Goshen tell me they are amazed at our downtown. Compared with most downtowns, it is a gem. But it doesn't happen by chance. Hearty and committed businesses, both first- and multi-generation, are part of the recipe, of course. All property owners have a self-imposed assessment that pays for streetscape improvements and shared services.

But in addition, a number of younger, creative minds have resulted in countless hours of volunteerism to create such events as "First Fridays," bringing thousands of people downtown every month. Many have never been here before, but once they're exposed to the variety and quality of our businesses, they will return again and again to purchase goods and services—and simply to enjoy themselves.

The time and energy it takes for the levels of success attained so far don't sustain themselves indefinitely on volunteer efforts and shoestring budgets. City government funds a little, the Chamber of Commerce helps, and banks and businesses help sponsor some of the promotions. The First Fridays committee, operating under Downtown Goshen, Inc., hopes to continue keeping events free to the public. But broader support is necessary if we are to continue what has been created—and, we hope, even build further on it.

Whew! That's why I'm becoming a "Friend of Downtown Goshen." Will you join me? Oh ... and added incentives await. "I love Goshen" T-shirts and tote bags come with \$25 and \$50 memberships, respectively. See you downtown!

Always for a better Goshen,

*Allan Kaufman*



## The Maple City Rag

Residents' Guide to Goshen City Services

202 S. Fifth St.  
Goshen, IN 46528



To:

Presorted  
Standard  
U.S. Postage Paid  
Goshen, IN  
Permit No. 162

Summer 2010

This publication is printed on recycled paper

Goshen Cruisin' Reunion, July 2009

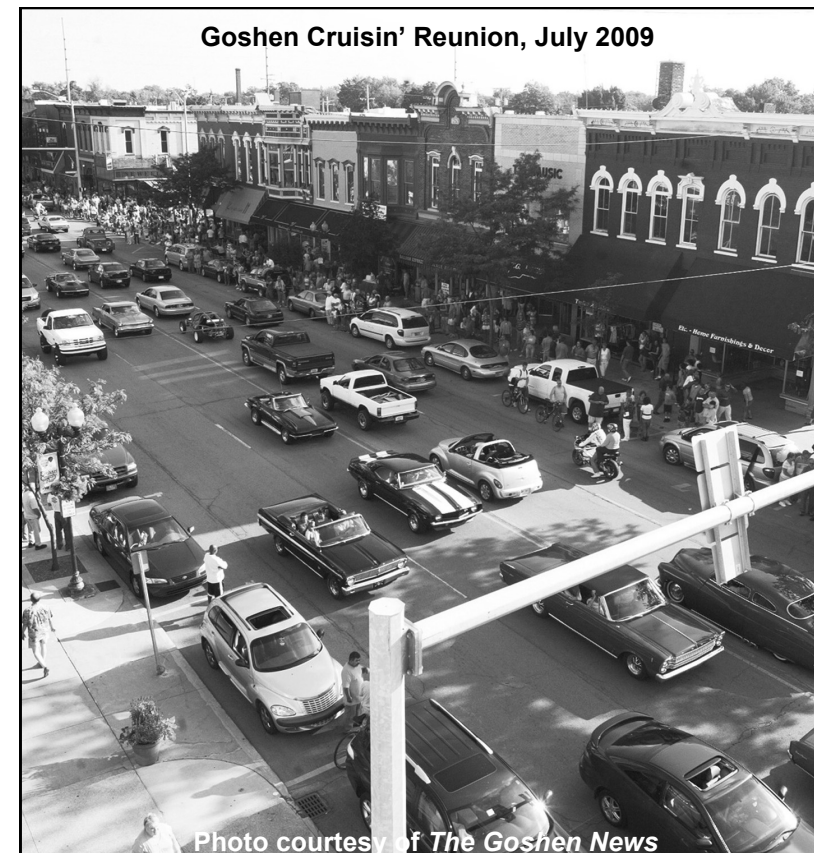


Photo courtesy of The Goshen News

## Mayor's Message: Downtown belongs to us all

Included in this edition of *The Maple City Rag* is an insert inviting you to become a "Friend of Downtown Goshen." You might be asking yourself why you would want to do that. But before you just throw the insert into the recycle bin, let me tell you why I will become a "Friend of Downtown Goshen"—and hope you will also.

I believe wholeheartedly that our downtown belongs to the entire community. It is our "sense of place." You could be dropped into the outskirts of most cities and be in Anywhere, USA. Strip malls, shopping plazas and commercial parcels largely look the same wherever you'd land. Very little is unique. Where old downtowns have

(continued on page 8)

## HISTORICAL CEMETERIES: NOT EVERYTHING IS OLD

Goshen's cemeteries have many visitors for the burial of a loved one, but some folks return to enjoy the tranquility of the grounds on less eventful days. Cemeteries are great places to spend a few moments in quiet reflection or to explore the historical markers that date back to Goshen's early days in the mid-1800s.

Not everything about City cemeteries is old. Each of the cemeteries—Oakridge, Violett and West Goshen—has been enhanced by recent tree plantings. Additionally, Violett has

added two new sections. One is “babyland,” and the other is devoted to cremation burials to provide a cost-effective alternative to full-size burial site. Oakridge created a new veterans' section, and, in 2011, it will be accessible from the Maple City Greenway bike and pedestrian trail.

For more information, contact the City cemeteries at 536.1489 or [cemetery@goshencity.com](mailto:cemetery@goshencity.com).

## SWIMMING POOLS TAKE PLANNING

Goshen's zoning ordinance regulates swimming pools that are deeper than 30 inches. Swimming pools are public (Shanklin Park), quasi-public or private. Quasi-public pools are generally maintained and operated by a subdivision, neighborhood or another specified area of residence. Private pools are more common and are an accessory use to the primary use of the property (home).

In recent years, pools that are smaller than traditional above-ground pools, yet larger than “kiddy inflatables,” have been popping up like mushrooms. To prevent unforeseen problems of zoning enforcement, variances, fencing expenses and other glitches, check with our office to be sure your pool of choice is within City requirements.

Private swimming pools are a Conditional Use permitted in all residential districts, provided the following specific conditions are met.

- Private pools are permitted in the rear half of the yard meeting the side and rear yard setbacks for accessory structures of the specific residential district in which the pool is located. For example, in most residential districts side and rear yards are 5 feet for accessory buildings.
- All swimming pools shall be enclosed by a fence or similar structure a minimum of 5 feet high. A self-latching gate with the latch placed 4 feet above grade also is required.

As with most building projects, a zoning clearance is required from the Planning & Zoning Office before the issuance of a building permit. The purpose of the zoning clearance is to verify compliance with all applicable zoning codes.

For more information, contact the Planning & Zoning Department at 534.3600 or [planning@goshencity.com](mailto:planning@goshencity.com).



## REGISTER YOUR BICYCLE BEFORE THE FEE GOES UP



Bicycle registration is a service that has been offered by the City of Goshen for many, many years. It is provided to residents regardless of whether they live inside the city limits.

The registration fee has been \$2 for more than 20 years, but it may be increasing soon. As this article is being written, a proposal is intended to go the City Council. It may have been approved by the time this newsletter hits mailboxes. If adopted, effective July 1, the City will offer this service to non-residents for a fee of \$4, and the Goshen resident fee will remain \$2. Effective September 1, fees will increase to \$5 for residents and \$10 for non-residents. Even at the increased amount, it's a small price to pay for a service that may help you recover your bicycle if it's stolen.

Registration is done during business hours at the Police Department, 111 E. Jefferson St. (Saturday, 8 a.m. to noon, and Monday to Friday, 8 a.m. to 5 p.m.), or at the Central Fire Station, 209 N. Third St., also on Saturday mornings from 8 a.m. to noon. The bicycle's serial number and other pertinent information are recorded, and an identifying sticker is affixed to the bike itself.

Interestingly, the decades-old bicycle registration ordinance actually requires that bicycles ridden on sidewalks or streets be registered. But it's a requirement that has never been enforced to anyone's knowledge. Proposed changes to the bicycle registration ordinance include moving from mandatory to voluntary registration. Without registration, however, it's difficult for police to help track down a stolen bicycle, some of which are significant financial investments for their owners.

For more information on bicycle registration, contact the Police Department at [police@goshencity.com](mailto:police@goshencity.com) or 533.8661.

*(PASSAGE, continued from page 6)*

“Shanklin-Millrace Passage” is the name that has been temporarily selected for the project. However, if you have an idea for a more appropriate name for the passage, please let us know by June 30.

For more information on the Shanklin-Millrace Passage or to suggest a name for the project, contact the Mayor's Office at 533.9322 or [mayor@goshencity.com](mailto:mayor@goshencity.com).

## CENSUS WORKERS ARE KNOCKING

Federal Census employees are going to street addresses from which Census forms were not returned by mail. Census employees carry a black bag with “Census” on it and will be wearing a federal identification tag. They are instructed not to ask to come into your residence.

It is important to cooperate by answering the 10 questions asked. Information is strictly confidential for 50 years! It is a federal offense for a Census employee to divulge information. Three important points:

- The City Building & Zoning departments will *not* find if there are too many people living in a residence.
- None* of the 10 questions has anything to do with citizenship or legal resident status.
- No information is shared with INS (Immigration & Naturalization Service) officials.

We simply need to know how many people live in Goshen. Our city receives state and federal funds based on how many people live within the Goshen city limits. If we do not get a complete count, we lose outside revenue. As a result, local taxes and fees must be increased—or services reduced. Neither of those two options is desirable.

So **please** cooperate! The process of gathering Census information will continue through July. Thank you.

## 'AIR-QUALITY ACTION DAYS' AND 'OZONE ACTION DAYS'

It's the time of year when we start hearing about "Air-Quality Action Days" and "Ozone Action Days." What is the reason? Are they really necessary—or even important?

The federal Environmental Protection Agency has determined that the air quality in Elkhart County is "in attainment" for levels of particulate matter (pollution). However, it is barely so. Federal anti-pollution requirements are scheduled to become more stringent, so it is possible that Elkhart County will fall into "non-attainment" status. If this happens, new regulations come into effect that will hamper economic development. In a time when we all hope for more jobs, this would be unwelcome news.

You might ask "What can I do? I'm only one person. I don't have a factory chimney belching smoke and fumes." Well, a difference can be made, even person by person. Some of the following steps would be helpful if done all the time. But it is most important that they be done whenever Air-Quality Action Days or Ozone Action Days are announced (when atmospheric

conditions are most likely to increase ground-level ozone).

- First of all ... pay attention to local newspapers, TV/radio station weather reports. When Air-Quality Action Days or Ozone Action Days are announced, take extra steps to reduce the pollution you're generating.
- Take the Interurban Trolley, bike or walk to work and for errands. On these specially designated days, trolley rides are free!
- If you must drive, plan to carpool.
- Make sure your vehicle tires are properly inflated to get best fuel efficiency.
- Don't mow grass on those days, but if you must, do so in the evening when temperatures are lower.
- Turn off your vehicle engine in order to avoid idling at railroad crossings or in other "waiting" situations.
- When you can afford it, switch to a more fuel-efficient vehicle.

For more information about Air-Quality Action Days and Ozone Action Days, contact Michiana Area Council of Governments at 674.8894 or [MACOG.com](http://MACOG.com).



## Air-Quality Index for Ozone

Index Values (Conc. Range) *	Air-Quality Descriptors	Cautionary Statements for Ozone
0–50 (0–60 ppb) **	Good	No health impacts are expected when air quality is in this range.
51–100 (61–75 ppb)	Moderate	Unusually sensitive people should consider limiting prolonged outdoor exertion.
101–150 (76–104 ppb)	Unhealthy for Sensitive Groups	Active children and adults, including people with respiratory disease, such as asthma, should limit prolonged outdoor exertion.
151–200 (105–115 ppb)	Unhealthy	Active children and adults, including people with respiratory disease, such as asthma, should avoid prolonged outdoor exertion; everyone else, especially children, should limit prolonged outdoor exertion.
201–300 (116–374 ppb)	Very Unhealthy	Active children and adults, including people with respiratory disease, such as asthma, should avoid all outdoor exertion; everyone else, especially children, should limit outdoor exertion.

\* Conc. Range = Concentration Range

\*\* ppb = parts per billion

## WHAT'S THE BUZZ? MOSQUITO PREVENTION IS WORTHWHILE!



Spring and summer bring mosquitoes. "How many" depends on how wet the season is. The City will continue its program of placing larvicide in catch basins, which are potential breeding sites. It is one of the most cost-effective measures the City can take.

Because of the opposition of some residents, the City has not sprayed for mosquitoes for many years—and will not do so this year. The West Nile virus has not been a big problem in Elkhart County. But an "ounce of prevention" is still worthwhile.

Goshen residents are asked to help reduce the mosquito population by removing any places where standing water becomes stagnant and breeds mosquitoes. Cleaning gutters and downspouts, disposing of old tires, and cleaning up trash piles that hold moisture are important measures.

Of course, once the little "buggers" hatch, there is no better protection than staying indoors at the times of day when mosquitoes are most active. Or use insect repellent.

Reprinted and updated from the April 2004 edition of *The Maple City Rag*.

## COME SPLASH WITH US AT RIETH PARK!

It's no wonder that splash playgrounds are one of the most requested amenities of the various parks and recreation departments around Indiana. Splash playgrounds are a great way to cool off during hot summer months, ideal for non-swimmers and, as an added benefit, "free fun."

We're excited to announce the construction of a new pavilion, complete with comfort stations, as well as a new splash playground for Rieth Park, 1508 S. 13<sup>th</sup> St. The splash pad is energy-efficient with a touch-activated spray system that operates only when participants are present.

We know neighborhood families have been eagerly awaiting these additions that incorporate water play, a meeting place with seating for adults and a shelter for group use. The recently constructed Walnut Park Splash Pad, 224 E. Oakridge Ave., has been a big hit, promoting fun for kids and social interaction among parents, which has proved to be great for building neighborhood ties.

Each summer the Rieth Park Neighborhood Association has an ice cream social; the

splash pad and new pavilion already are bringing even more enjoyment and participation to this neighborhood park.

While the park and pavilion are available for daily usage at no cost, if you wish to reserve the pavilion for a birthday party, family reunion or gathering of 25–50 people, a modest rental fee will be attached.

The Rieth Pavilion and Splash Pad were completed in May. The splash pad flows daily until August 15—from noon to 8 p.m. (weather permitting)—and is an adult-supervised recreation facility. Remember, even though there is no deep water, we want to make sure the children are safe at all times; it is imperative that parents or other adults watch the children and follow all park rules.

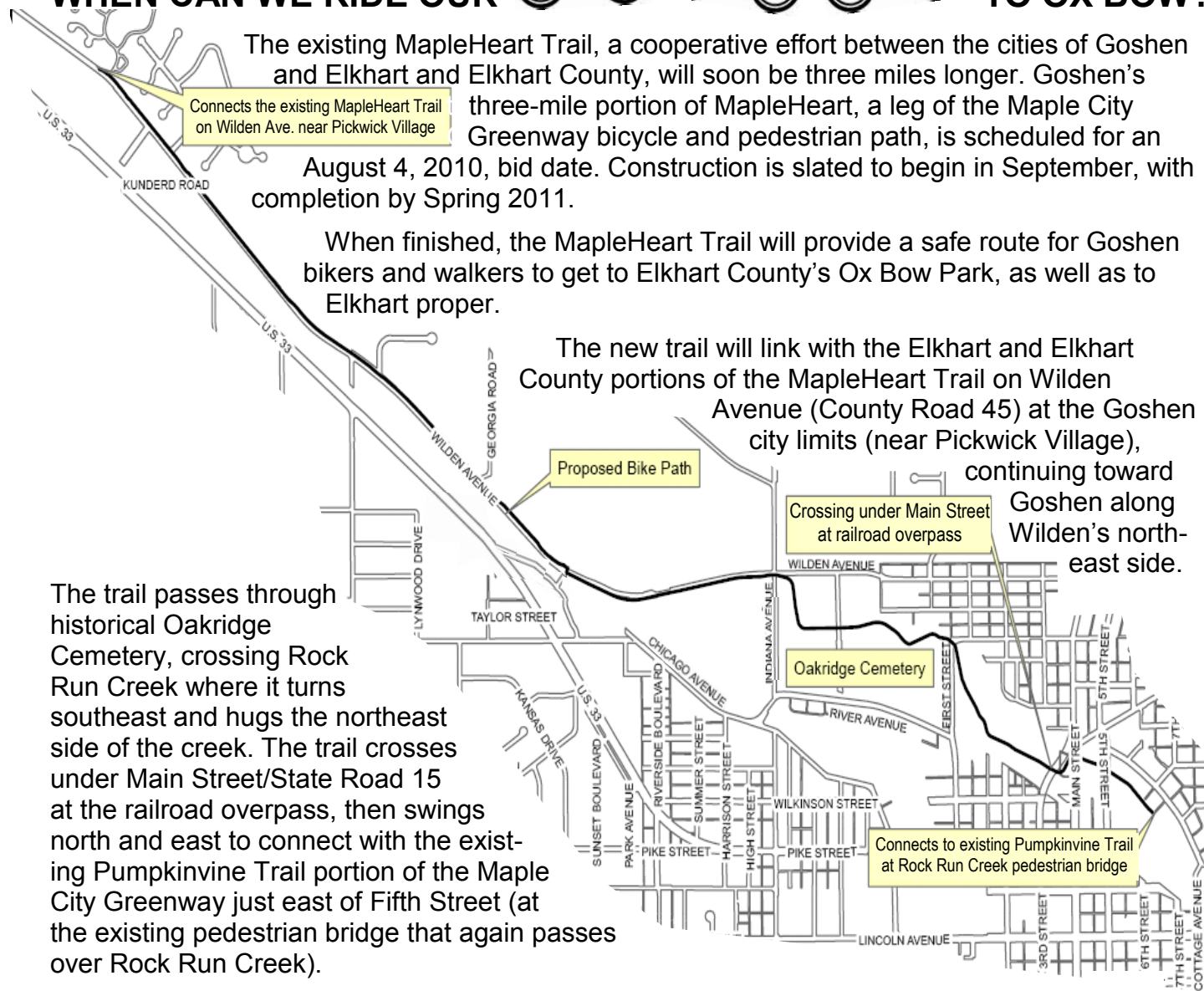
For more information or pavilion rental, contact the Parks & Recreation Department, 607 W. Plymouth Ave., at 534.2901, or [parksrecreation@goshencity.com](mailto:parksrecreation@goshencity.com).



**ANSWER: SPRING 2011**

**QUESTION:**

**WHEN CAN WE RIDE OUR TO OX BOW?**



The existing MapleHeart Trail, a cooperative effort between the cities of Goshen and Elkhart and Elkhart County, will soon be three miles longer. Goshen's three-mile portion of MapleHeart, a leg of the Maple City Greenway bicycle and pedestrian path, is scheduled for an August 4, 2010, bid date. Construction is slated to begin in September, with completion by Spring 2011.

When finished, the MapleHeart Trail will provide a safe route for Goshen bikers and walkers to get to Elkhart County's Ox Bow Park, as well as to Elkhart proper.

The new trail will link with the Elkhart and Elkhart County portions of the MapleHeart Trail on Wilden Avenue (County Road 45) at the Goshen city limits (near Pickwick Village), continuing toward Goshen along Wilden's north-east side.

The trail passes through historical Oakridge Cemetery, crossing Rock Run Creek where it turns southeast and hugs the northeast side of the creek. The trail crosses under Main Street/State Road 15 at the railroad overpass, then swings north and east to connect with the existing Pumpkinvine Trail portion of the Maple City Greenway just east of Fifth Street (at the existing pedestrian bridge that again passes over Rock Run Creek).

For more information, contact the City Engineering Department at 534.2201, or [engineering@goshencity.com](mailto:engineering@goshencity.com).

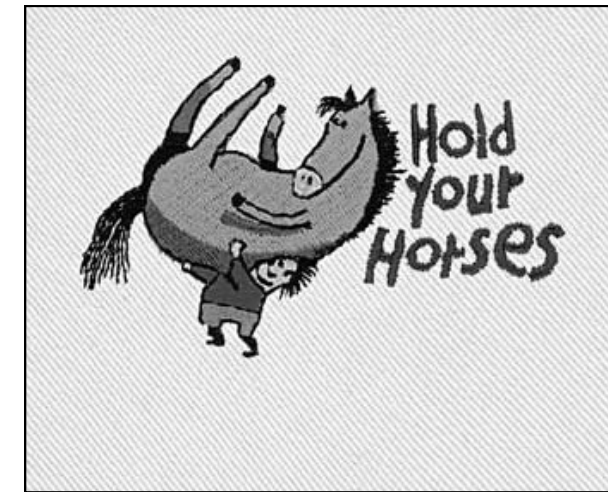
**SHANKLIN-MILLRACE PASSAGE: NEARLY COMPLETE**



West Plymouth Avenue/State Road 119 has been open since May 13. And construction of the Shanklin-Millrace Passage is scheduled to be completed by July 9, just in time for the 2010 Kids' & Teens' Try-Athlon on Saturday, July 10.

The passage is the newest addition to the award-winning Maple City Greenway system of bike and pedestrian paths. Specifically, the passage is adjacent to the Goshen Millrace and safely continues the Greenway without forcing users to cross Plymouth Avenue, which is increasingly busy and has limited visibility due to curves in the road.

**TRASH COLLECTION SCHEDULE ADJUSTMENTS**



Whoa there, buckaroo! There will be **no change** in the trash collection schedule for the week of Independence Day, which falls on Sunday this year.

The week of Labor Day **will** have an adjusted trash collection schedule. Each collection route will be delayed one day: For instance, a household regularly collected on Monday will be collected on Tuesday during the holiday week. The schedule will continue throughout the week, with the Friday stops being collected on Saturday.

For more information, call Allied Waste at 522.1331.

**A WAY FOR POOL OWNERS TO SAVE MONEY!**

Swimming pool owners (residential only) wishing to avoid paying sewer charges for the water used to fill their pool can do this by filling from their lawn-sprinkling system. This is the only surefire way for filling pools to avoid paying a sewer charge for water that never makes it to the sewer. Although there are costs for setting up a lawn-sprinkling account, this one-time cost may be preferable to paying for sewer charges on pool water over the life of the pool.

A sprinkling meter account is one designated by the Water & Sewer Utility for water that will be used on lawns, gardens and landscaping—and that won't end up in the sewer system and be processed through the Wastewater Treatment Plant.

Sprinkling meters typically are 5/8 inch, 3/4 inch or 1 inch. The following example uses 1-inch meter costs to demonstrate the higher of the three typical meters; other sizes may have correspondingly lower or higher costs.

Initial setup costs (not including a plumber):

Meter	\$184.00
Meter horn	40.00
Sales tax	15.68
Outside reader (installation charge)	<u>25.00</u>
<b>Total</b>	<b>\$264.68</b>

Monthly costs for the lawn-sprinkling meter are:

Meter	\$5.68
Sales tax	.40
Water	1.57 * + sales tax, per 100 cubic feet of water usage

\* Prices decrease after the first 3,000 cubic feet

Pool owners may make a quick call to the Business Office to turn off lawn-sprinkling accounts for the winter so that those months are free of all charges.

For more information about lawn-sprinkling meters, contact the Water & Sewer Business Office at 533.9399 or [watersewer@goshencity.com](mailto:watersewer@goshencity.com).

